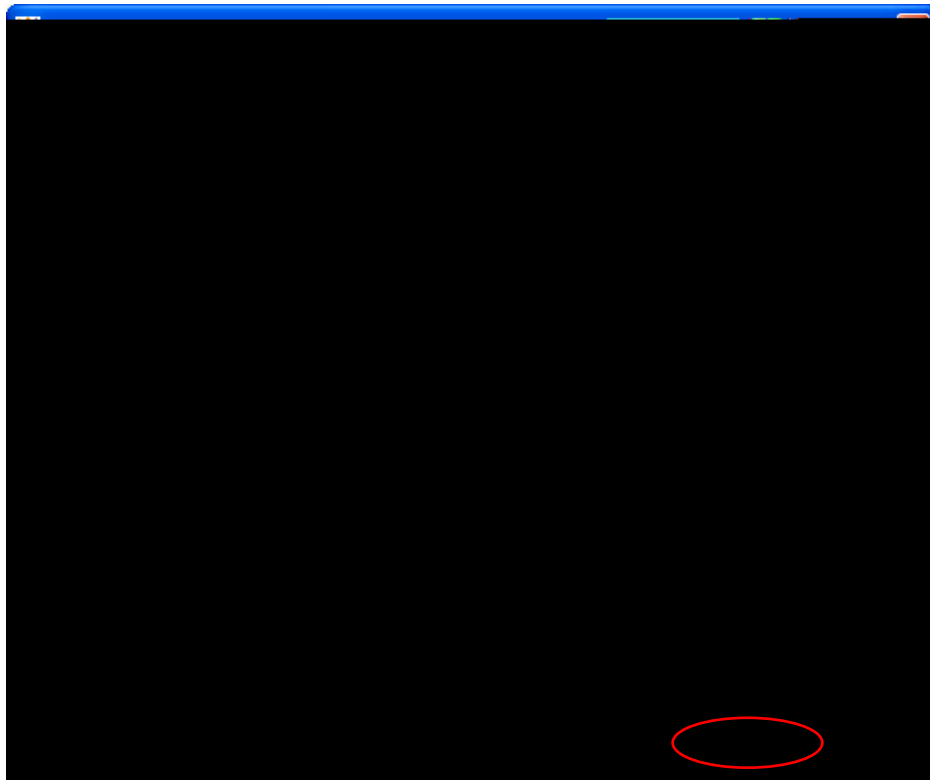
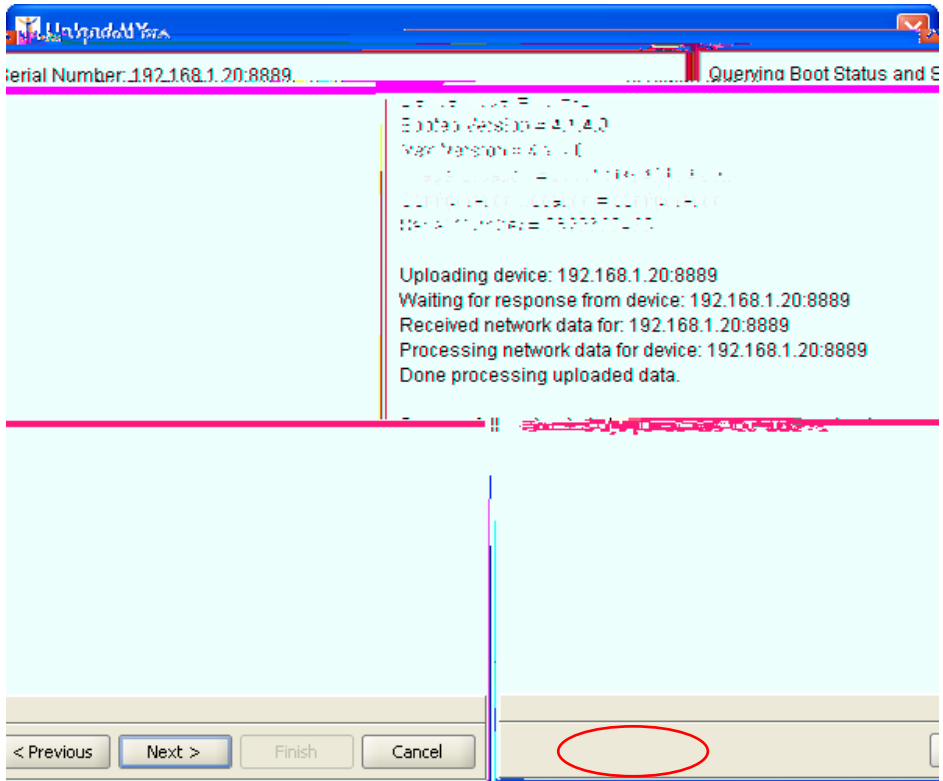


Upload MX ✕

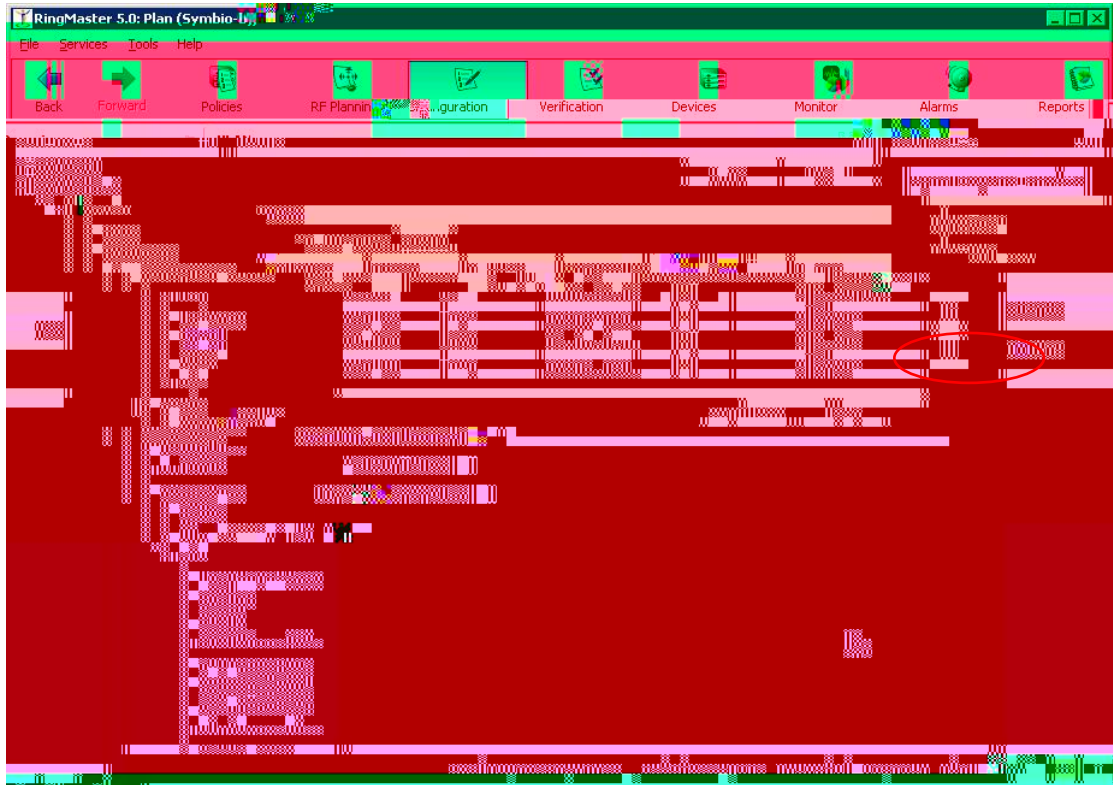
IP Address

Enable Password

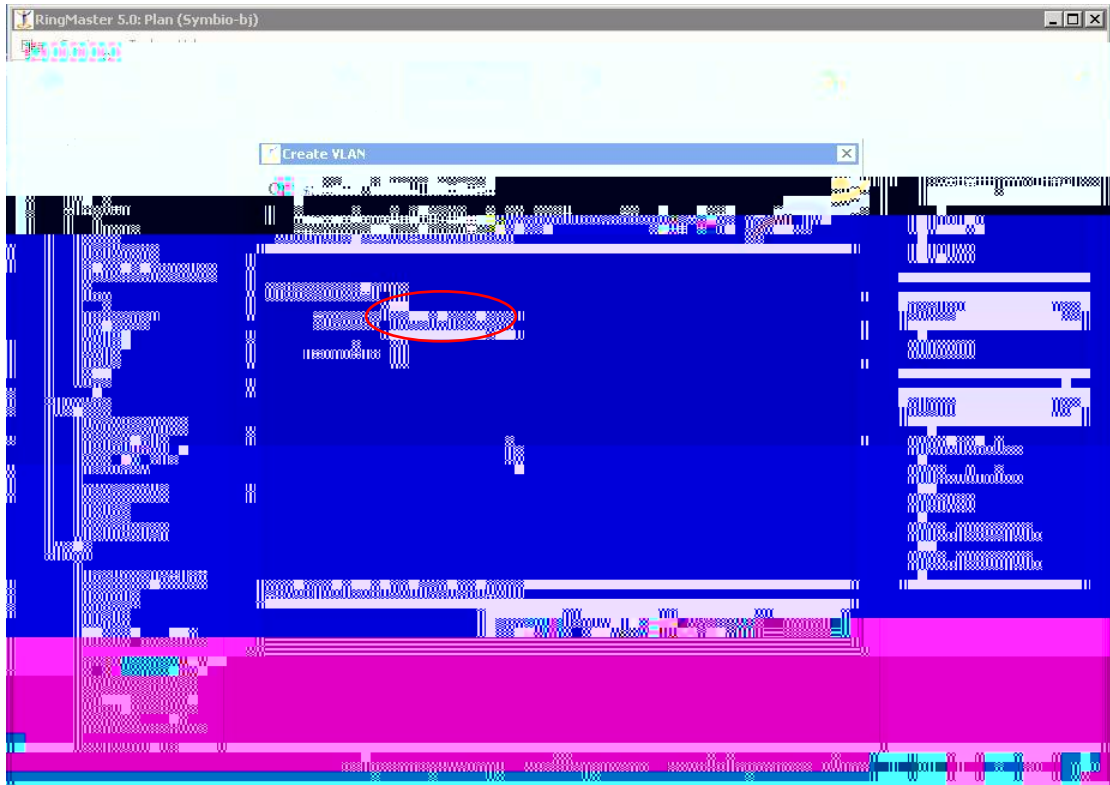
Updated [Enable Password] Value [044f19071f24564b]



4. vlan



The image shows the 'Create VLAN' dialog box in RingMaster 5.0. The dialog has a title bar 'Create VLAN' and a subtitle 'VLAN Identifier'. The main text reads: 'Enter a unique name to identify the VLAN. You can use numbers, letters, and hyphens.' Below this text is a text input field. A red circle highlights the input field. The dialog also includes a 'Cancel' button and a 'Next' button. The background shows the 'Organizer' pane with a tree view containing 'Symbio-bj', 'symbio-bj-mx', 'System', and 'Ports'. The 'VLANs Tasks' pane on the right shows 'symbio-bj-mx Chan...'. The status bar at the bottom indicates '1/1' and '100%'.



vlan ip addr



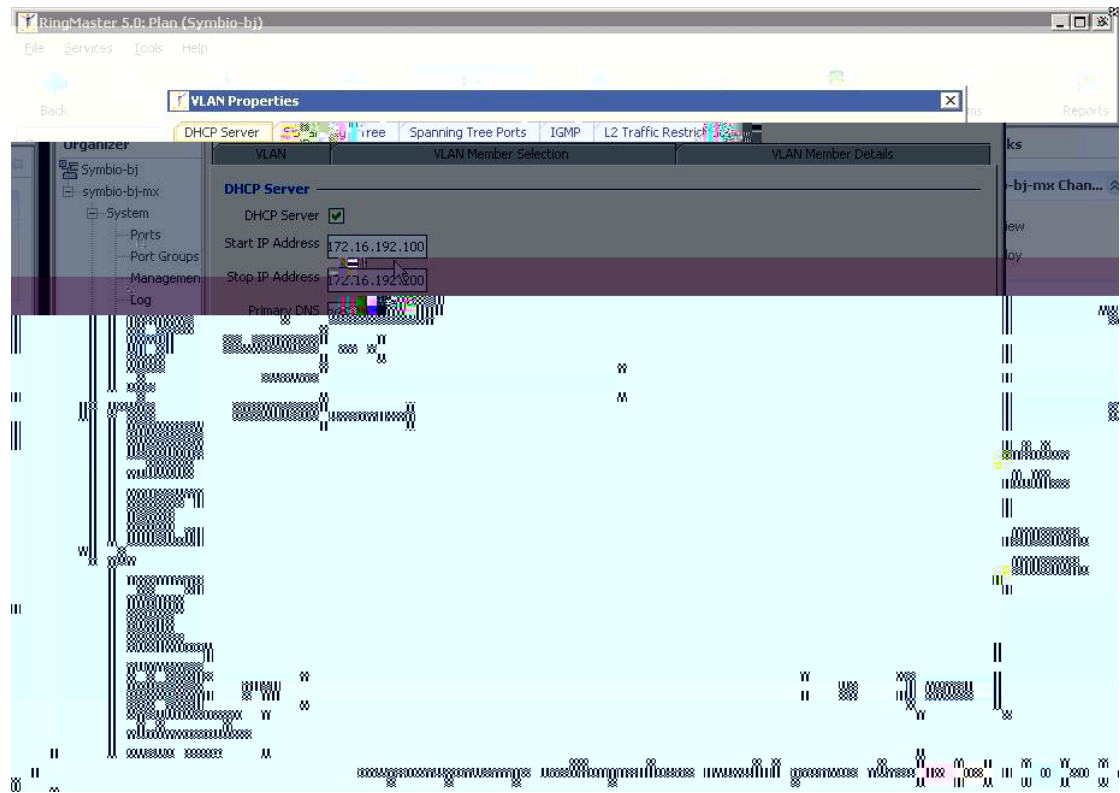
vlan



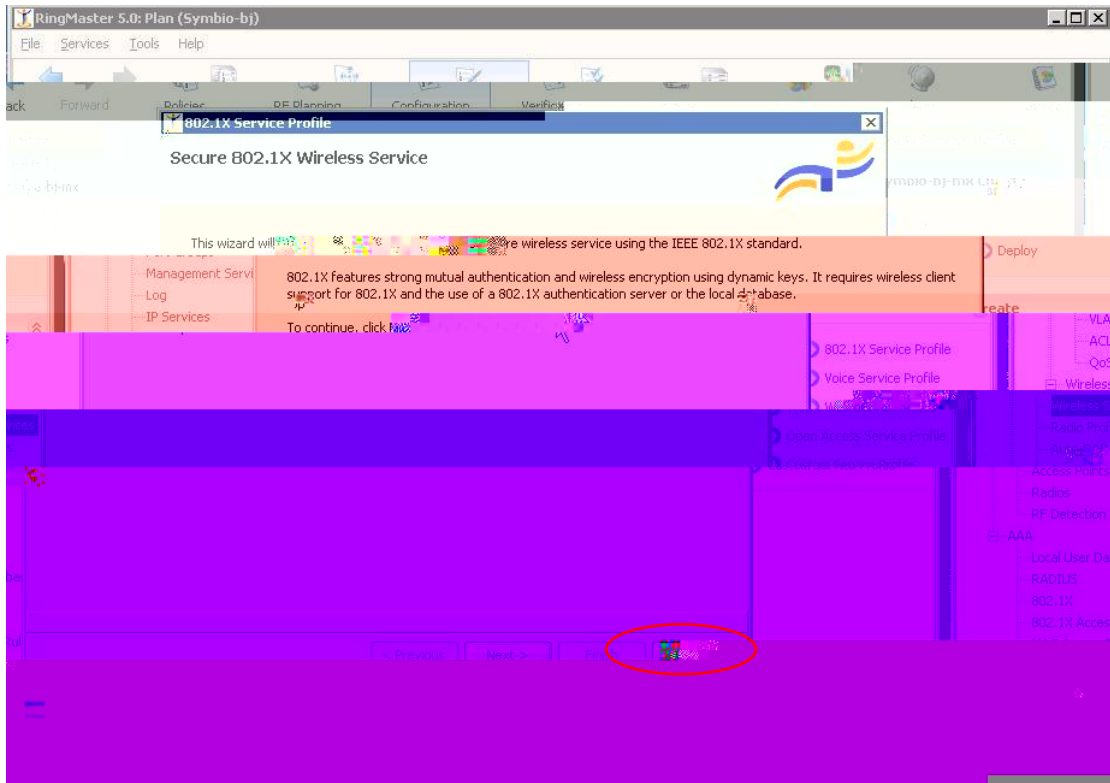
The screenshot displays the configuration interface for a VLAN in RingMaster 5.0. The 'VLAN Properties' dialog box is open, showing the following configuration details:

- VLAN ID:** 11
- VLAN Name:** vlan1192
- Admin State:** Enabled
- Tunnel Affinity:** 5
- Interface:** #3d
- IP Address:** 172.16.192.2/24
- Interface:** #3d
- Aging Time [seconds]:** 300

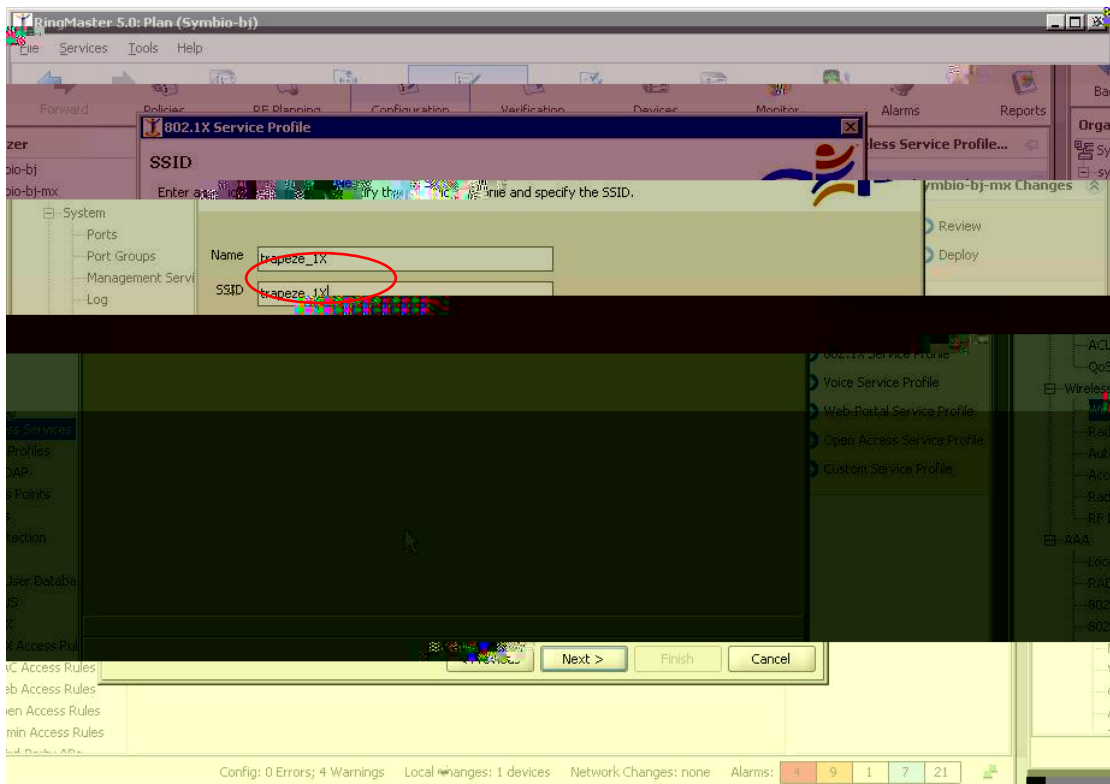
The 'DHCP Server' tab is selected and highlighted with a red circle. The 'Spanning Tree' tab is also visible. The background shows the network topology from the previous image, with the same red circle highlighting the device corresponding to the configuration shown in the dialog box.



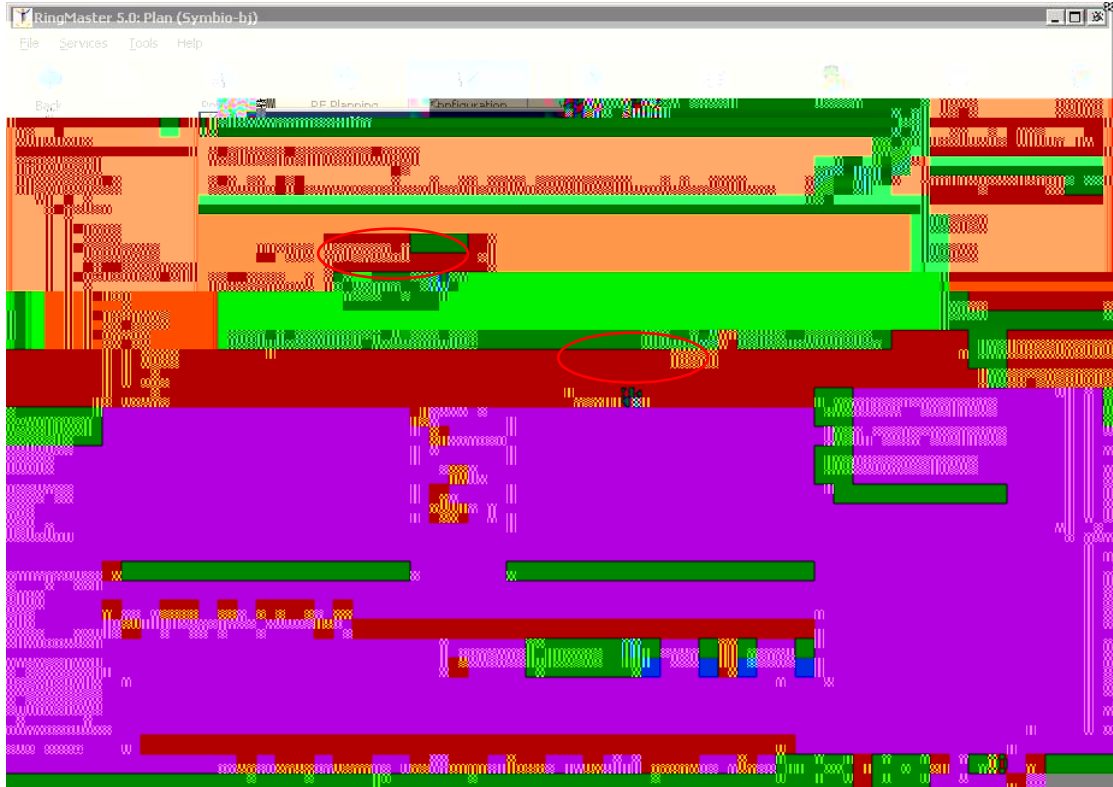
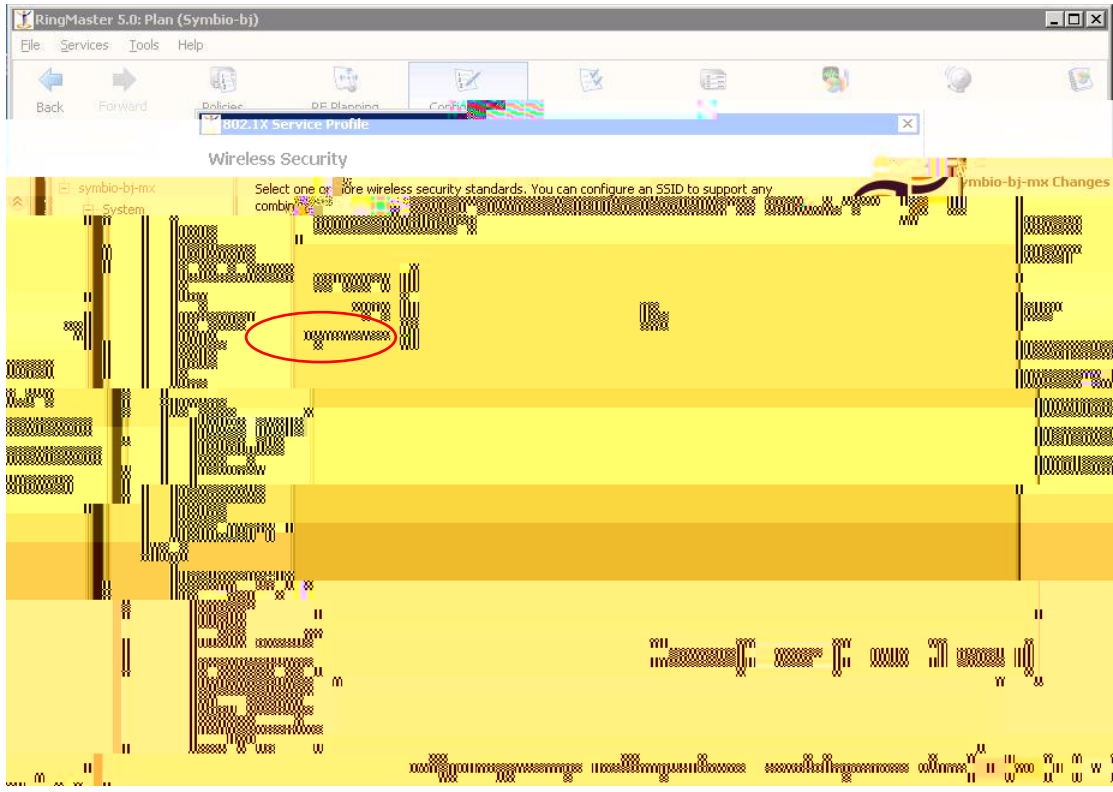
vlan dhcp

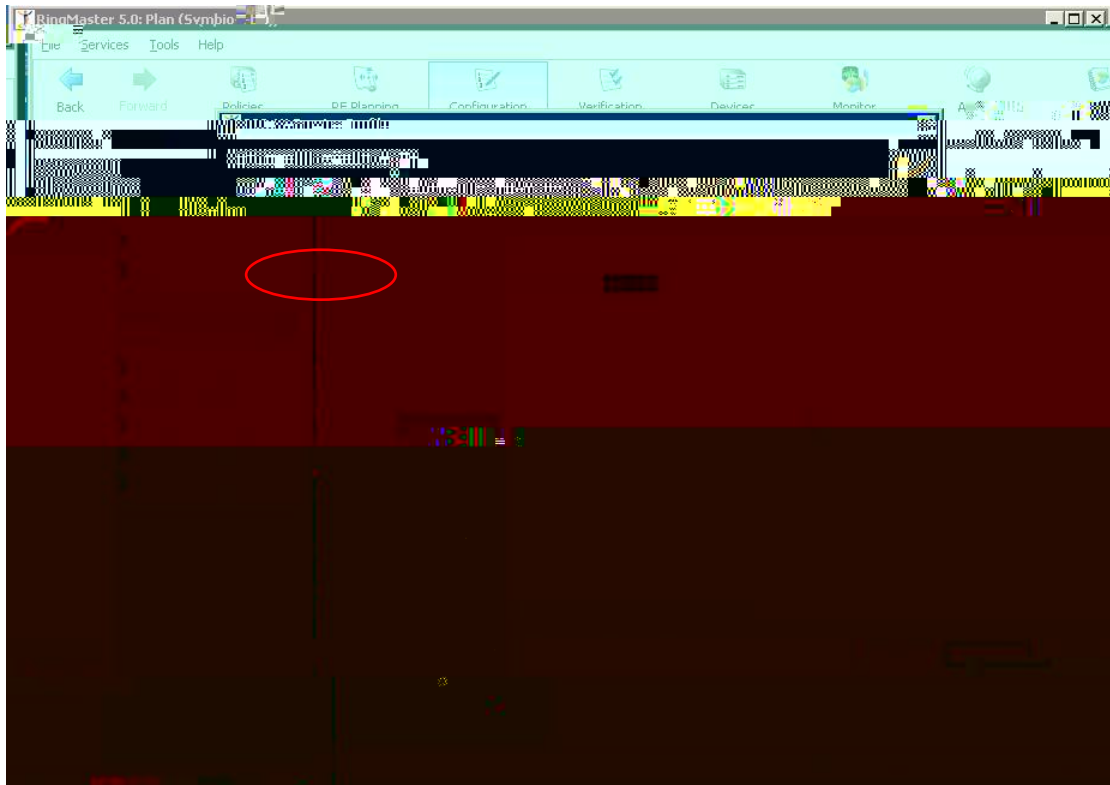


Service Profile 802.1X Service Profile

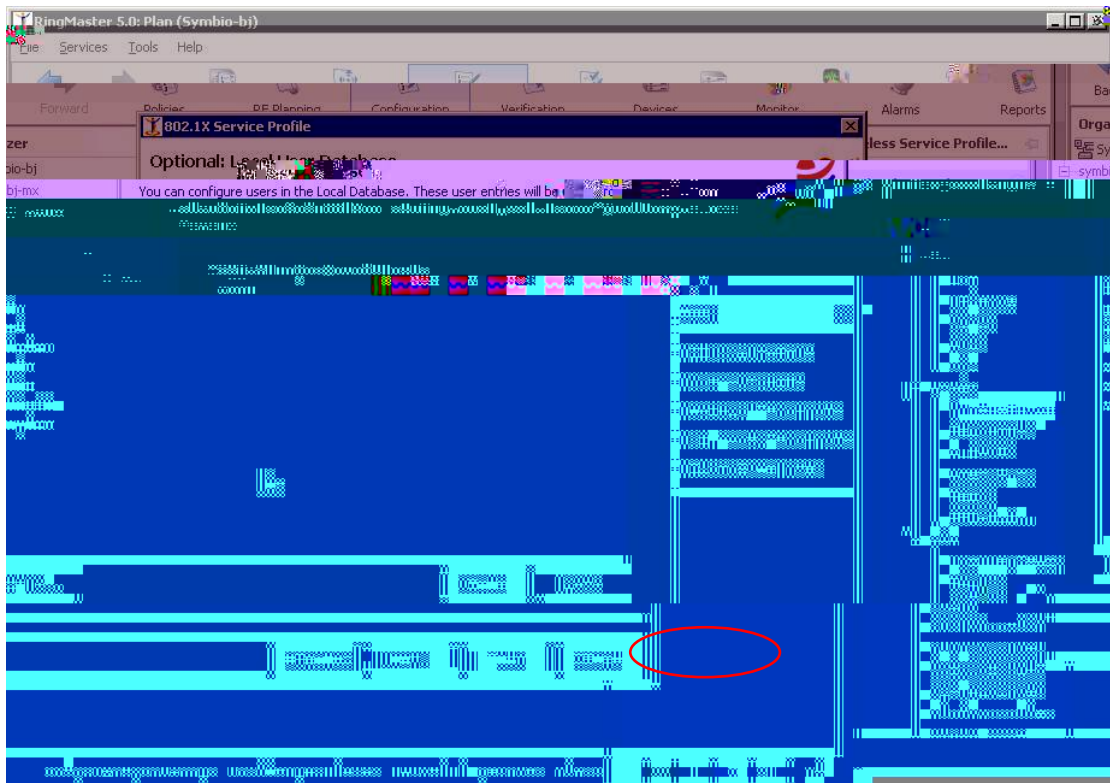


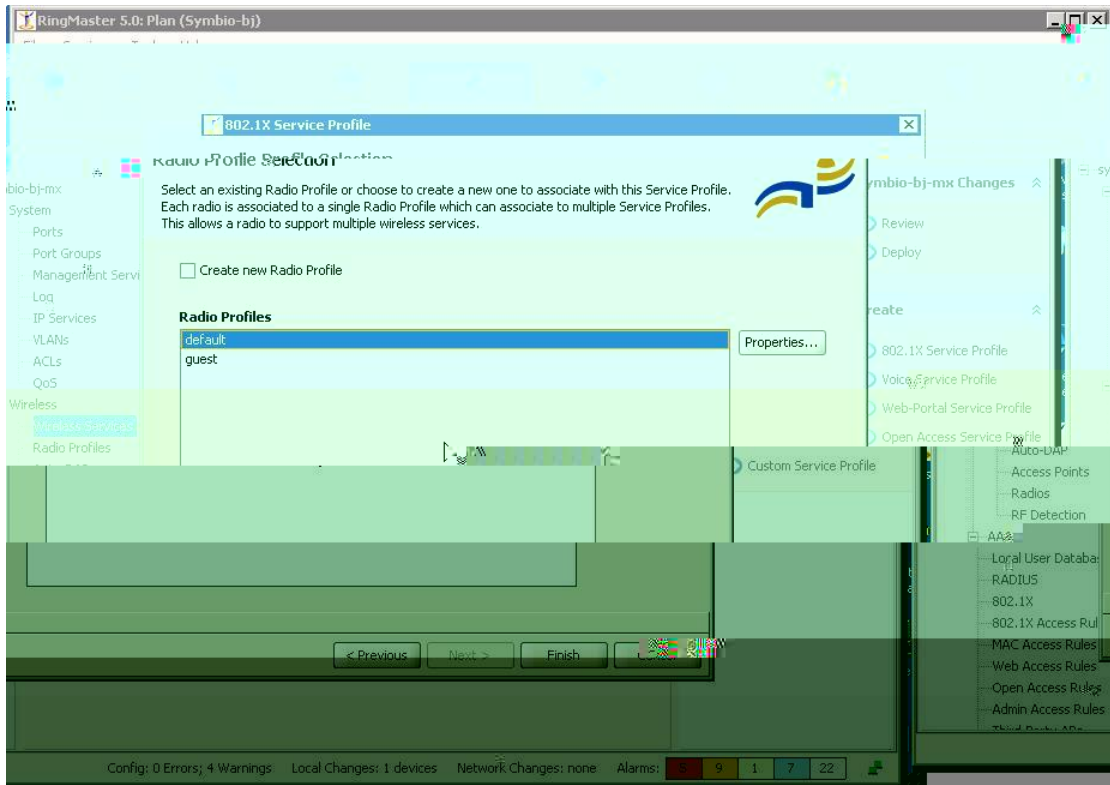
SSID trapeze_1X
SSID



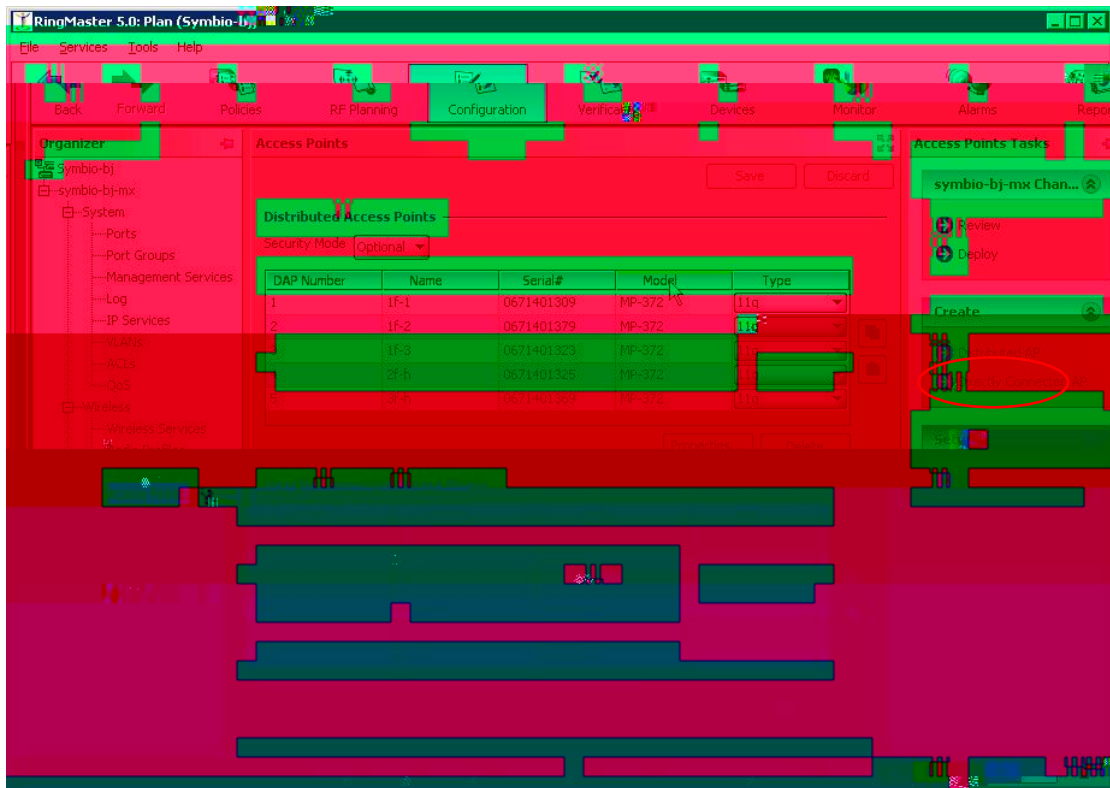


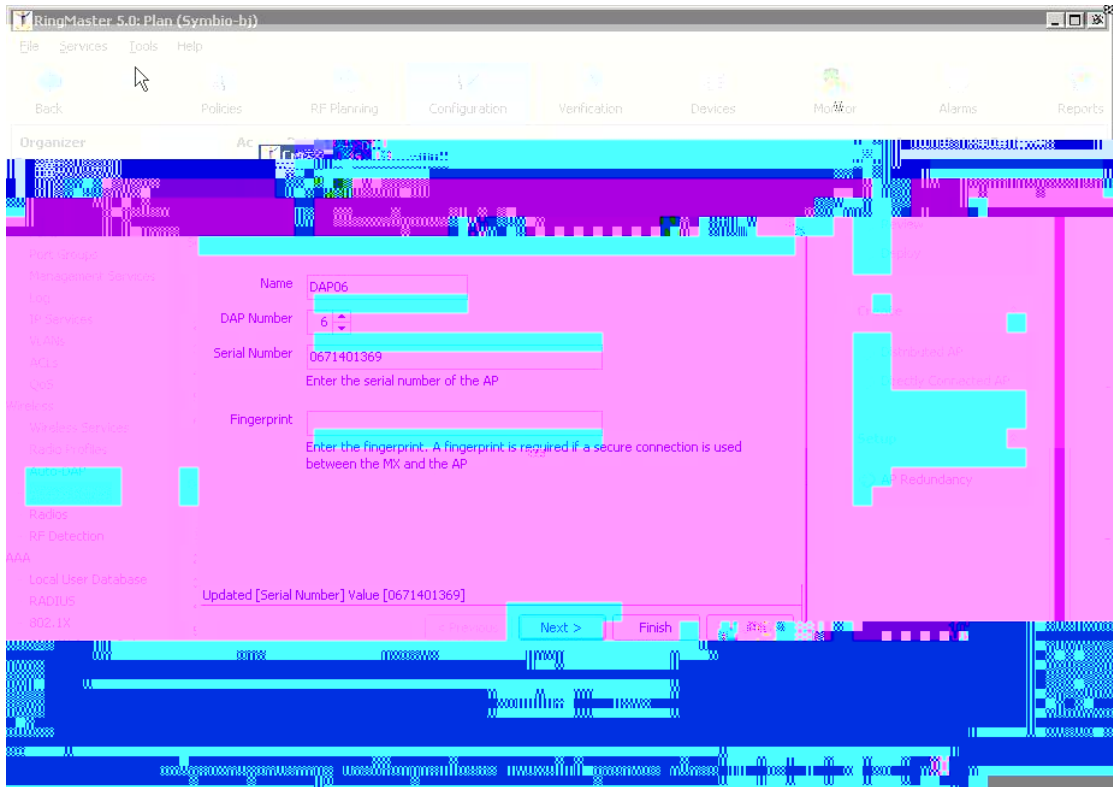
Service vlan name



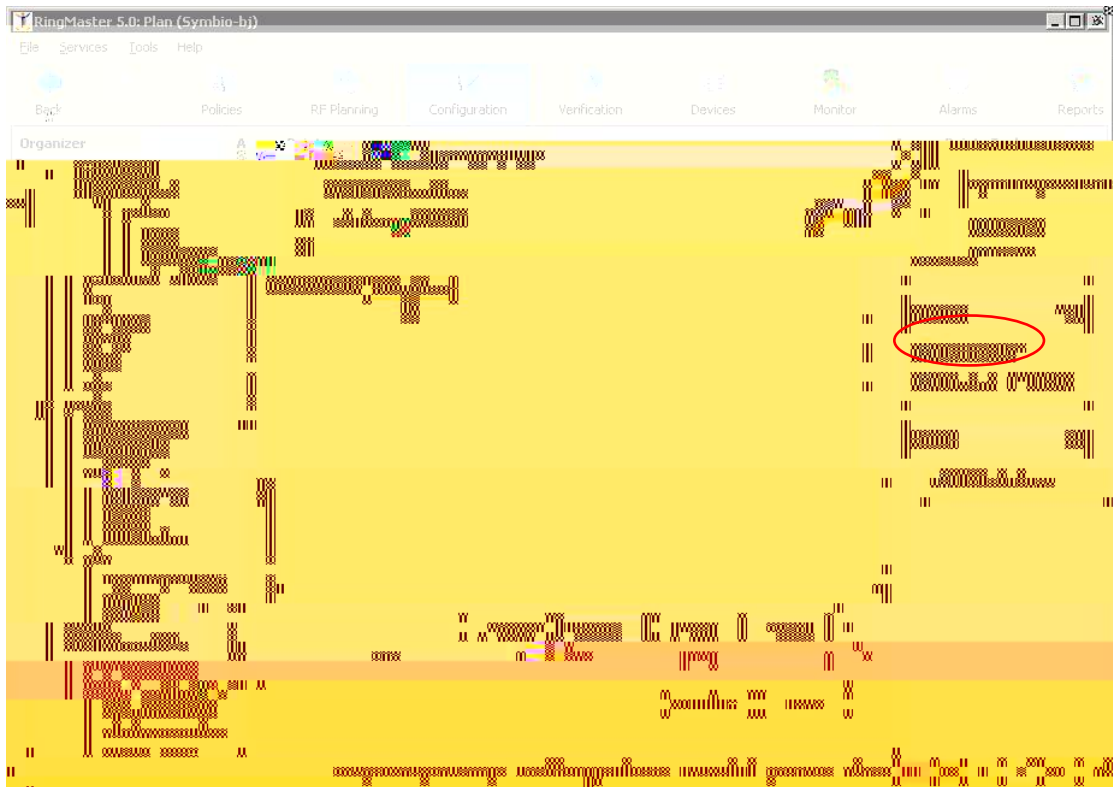


6. AP

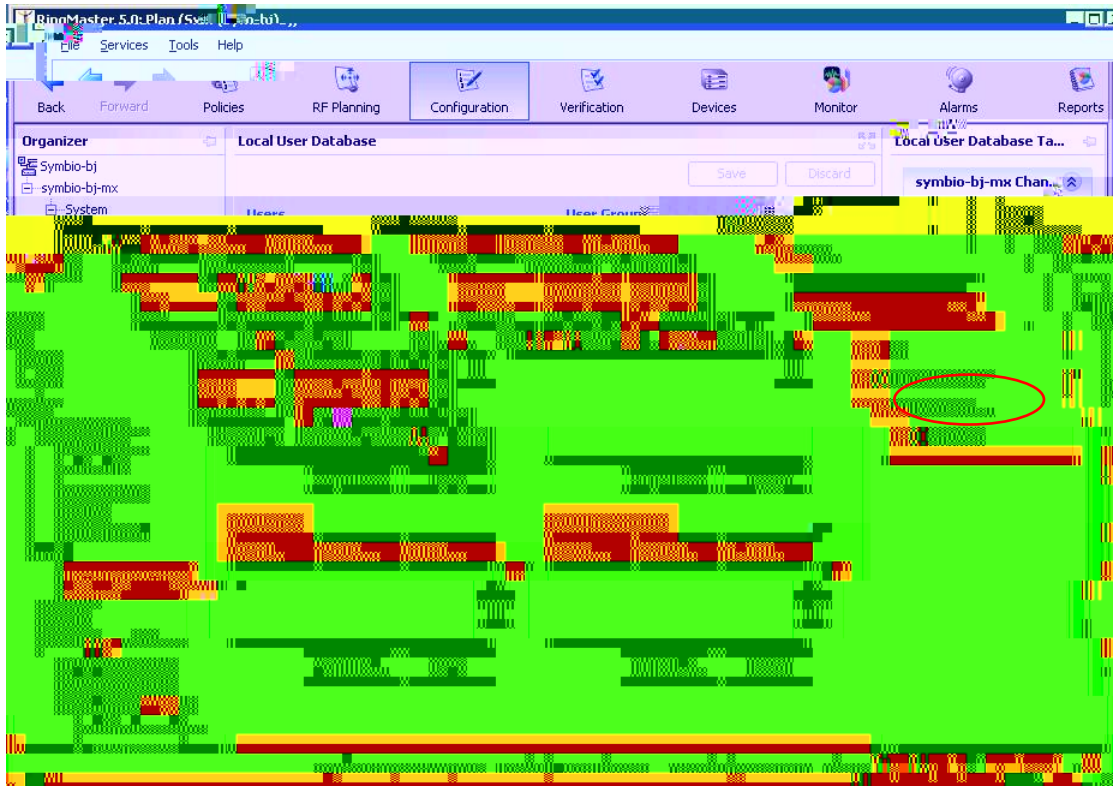


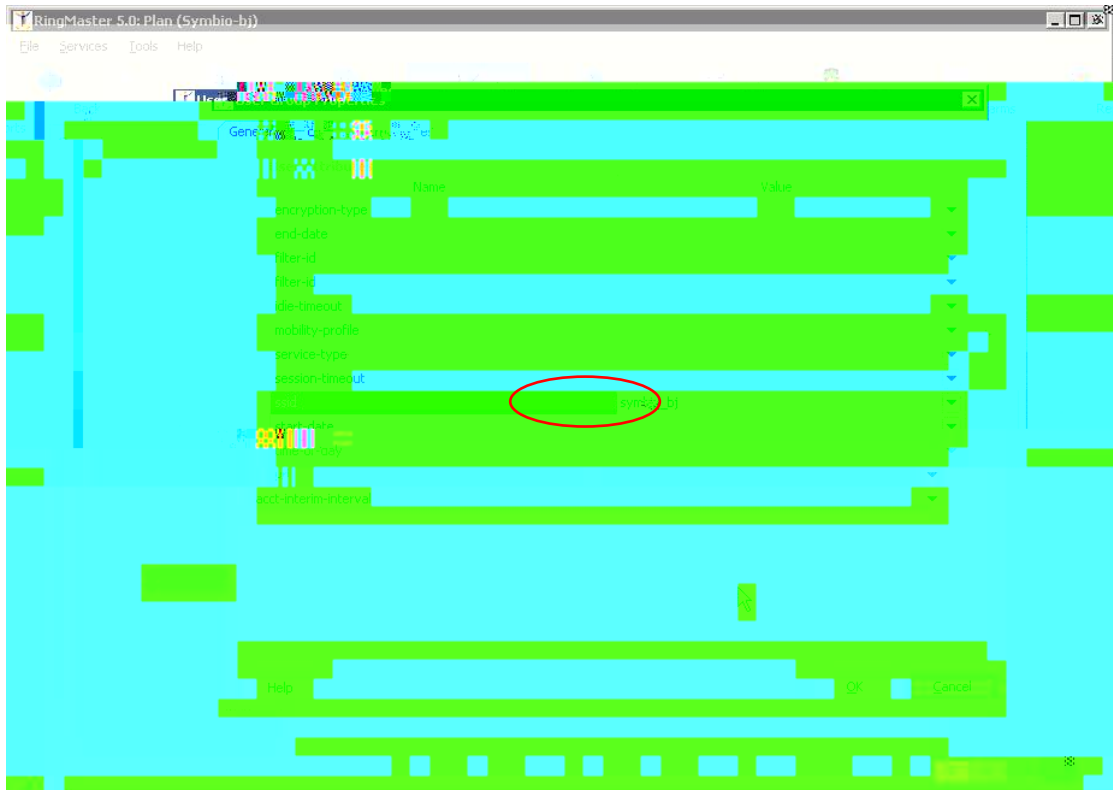


AP AP S/N



7.

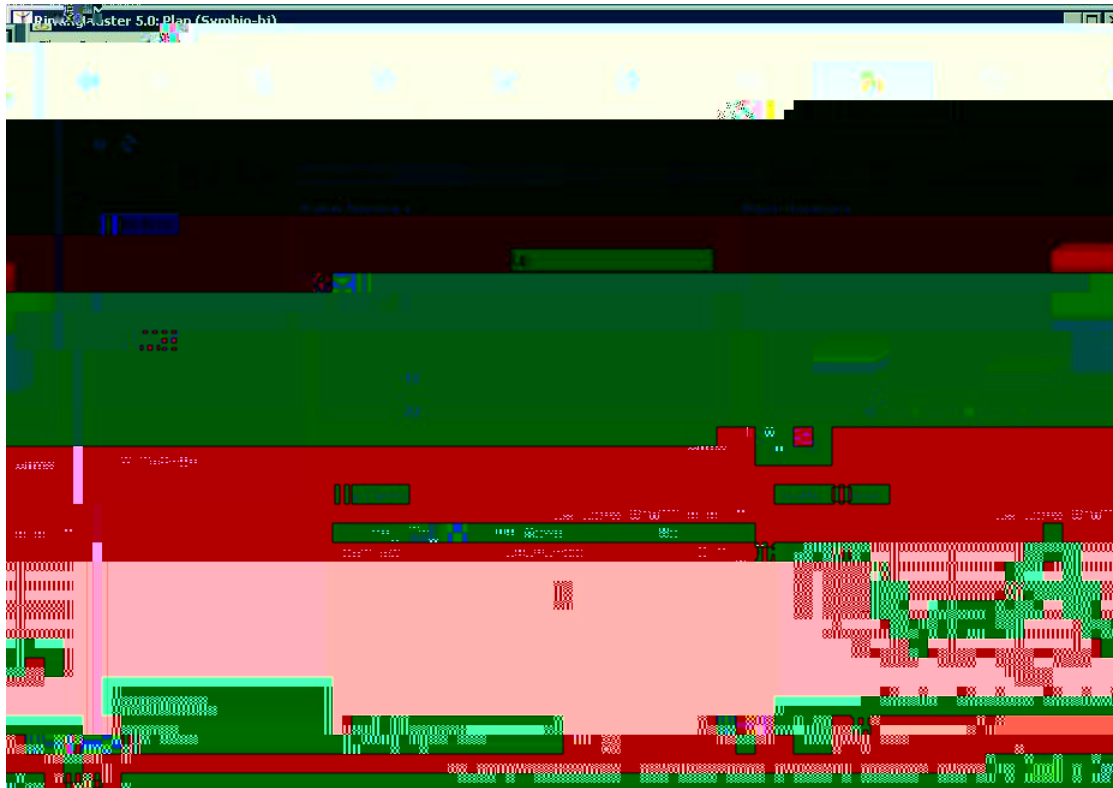


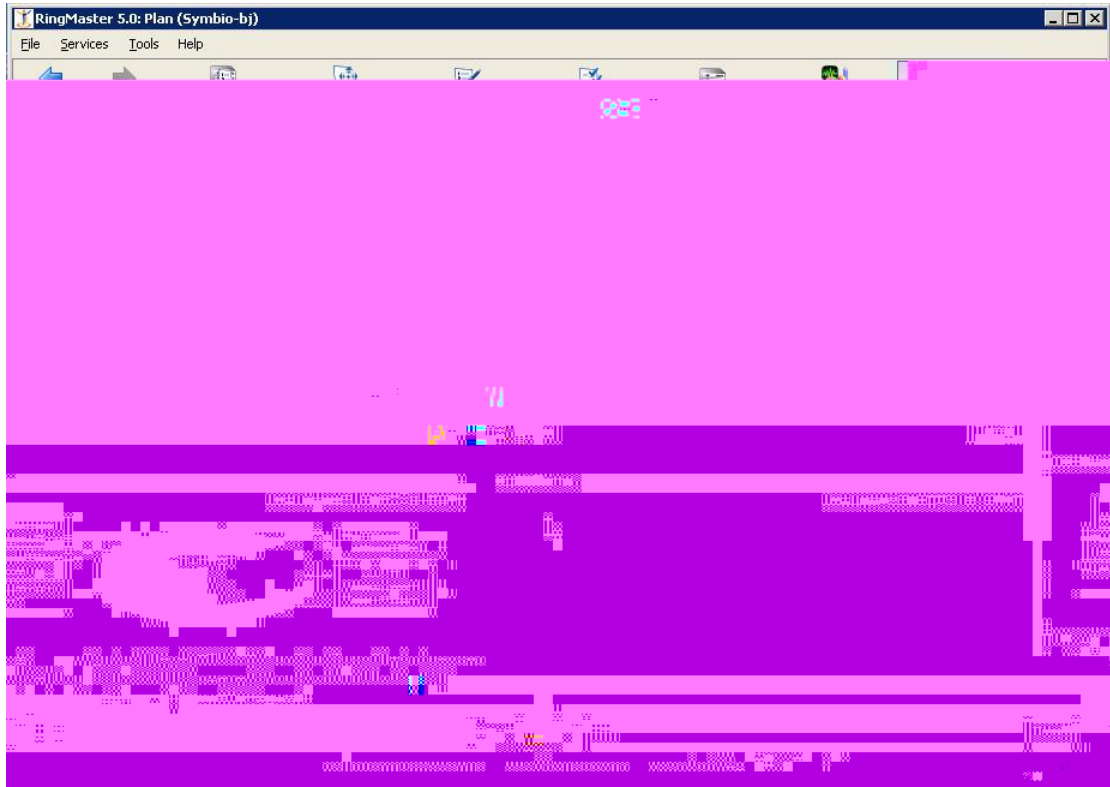


SSID

ACL

8.





9. RF planning

