



1	WEB	5
1.1		5
1.1.1	console	EG	5
1.1.2		8
1.1.3		11
1.1.4	WEB	13
1.2		14
1.2.1	console	EG	14
1.2.2		17
1.2.3	WEB	EG	18

1 WEB

1.1

1.1.1

console

NPE

1.1.2

1 " " ----- ----- -----

2

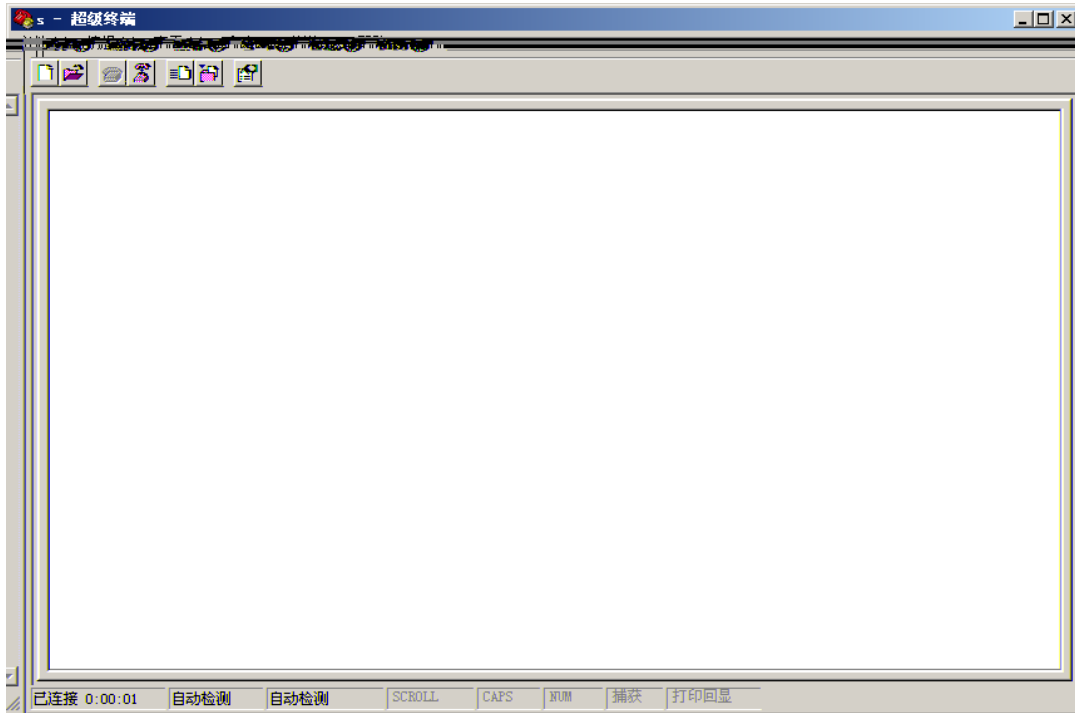
"

"

COM

"

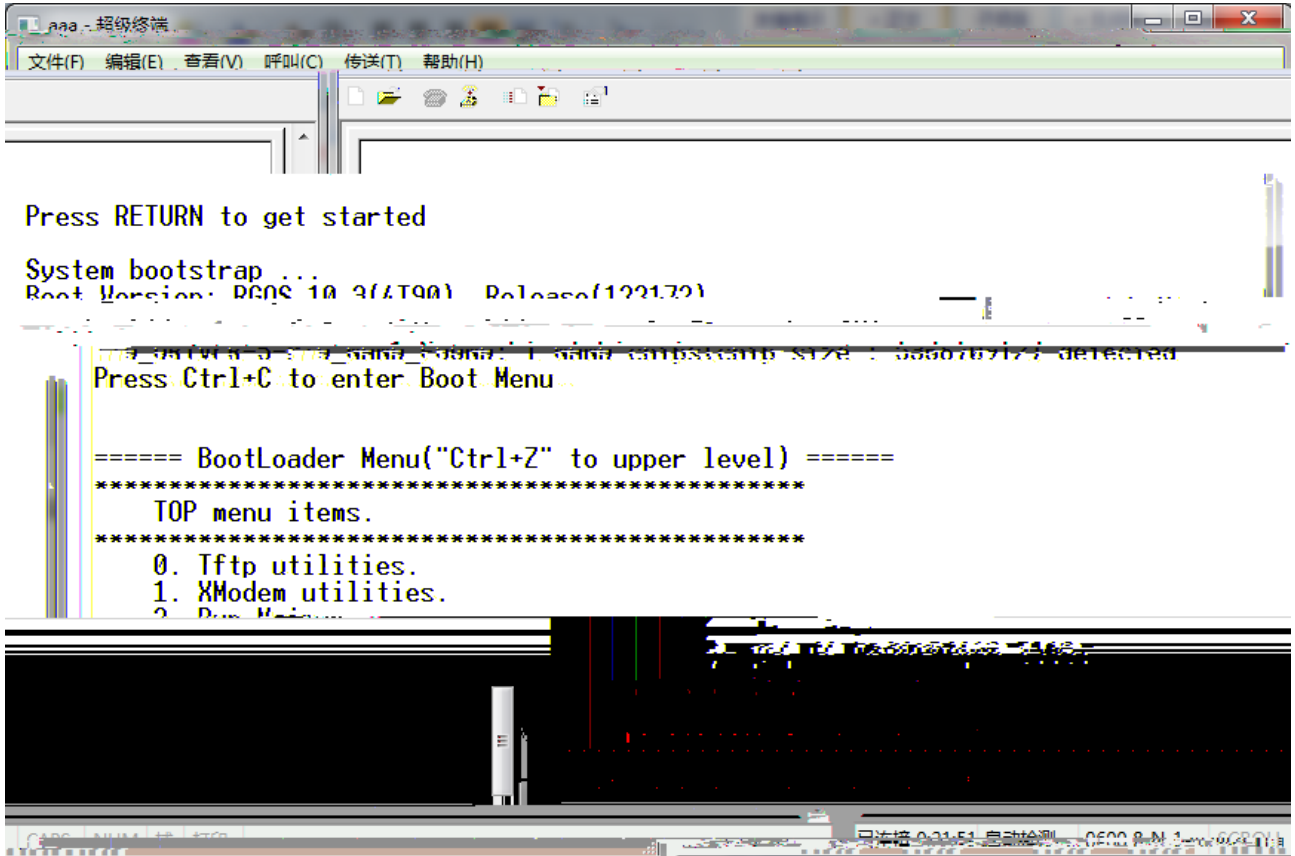
"



<http://ishare.iask.sina.com.cn/f/12091227.html?from=like>

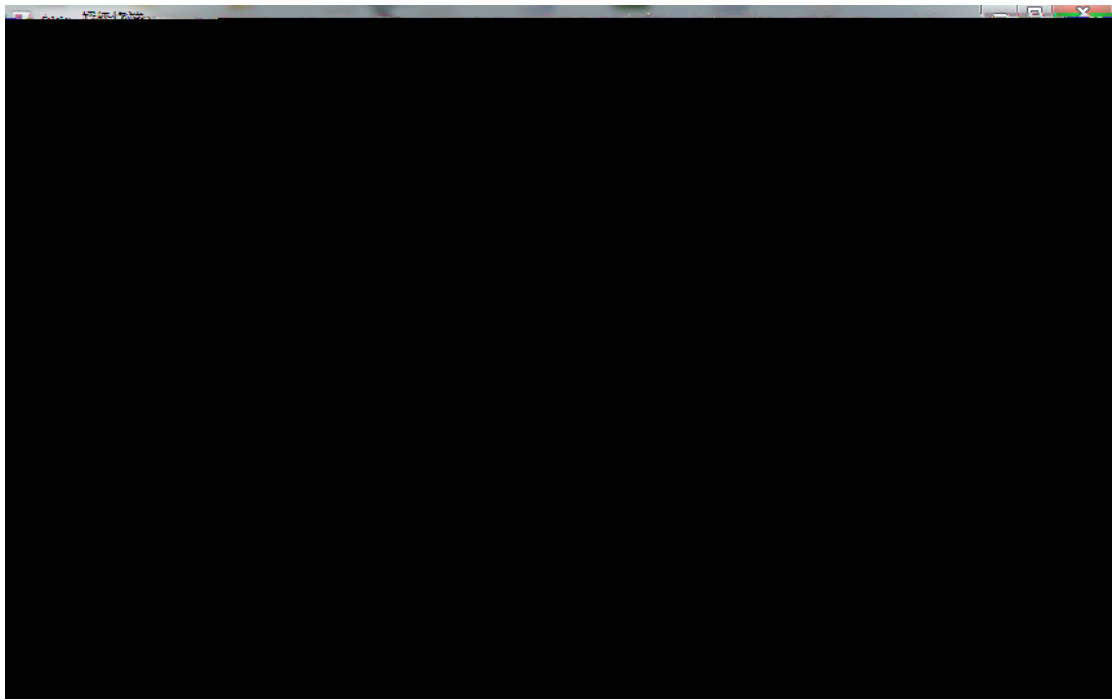
1.1.3

" Ctrl + C "



1

4

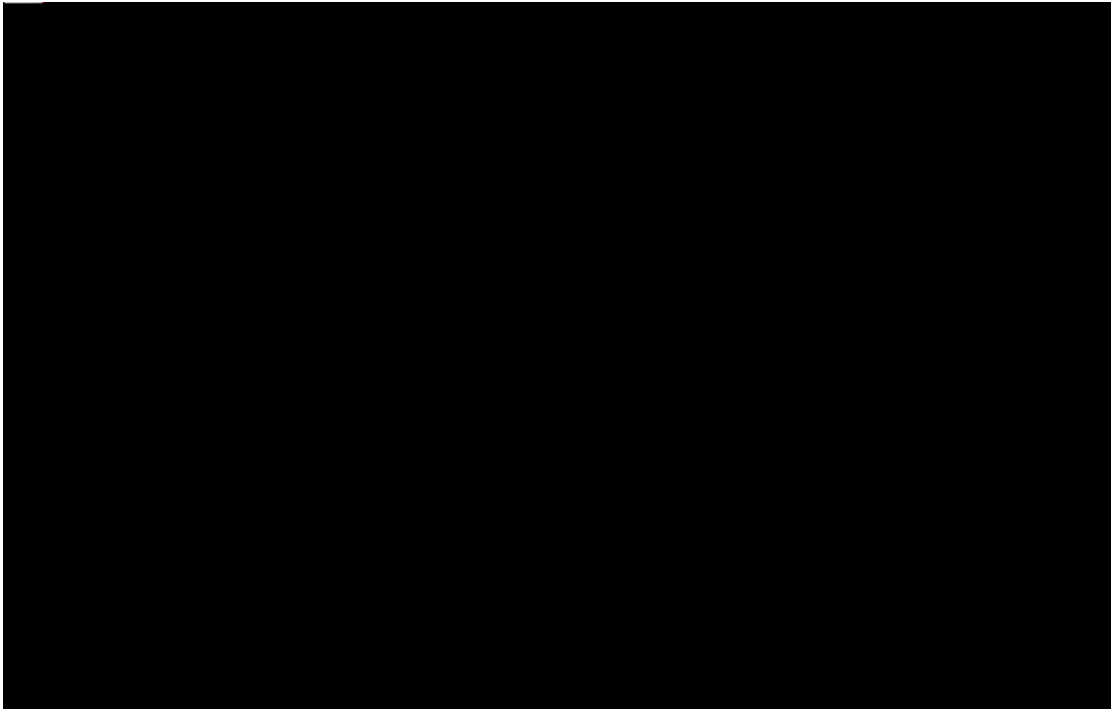


2

2

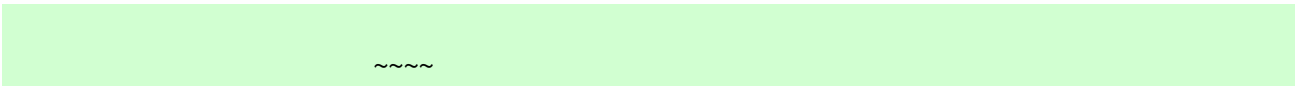
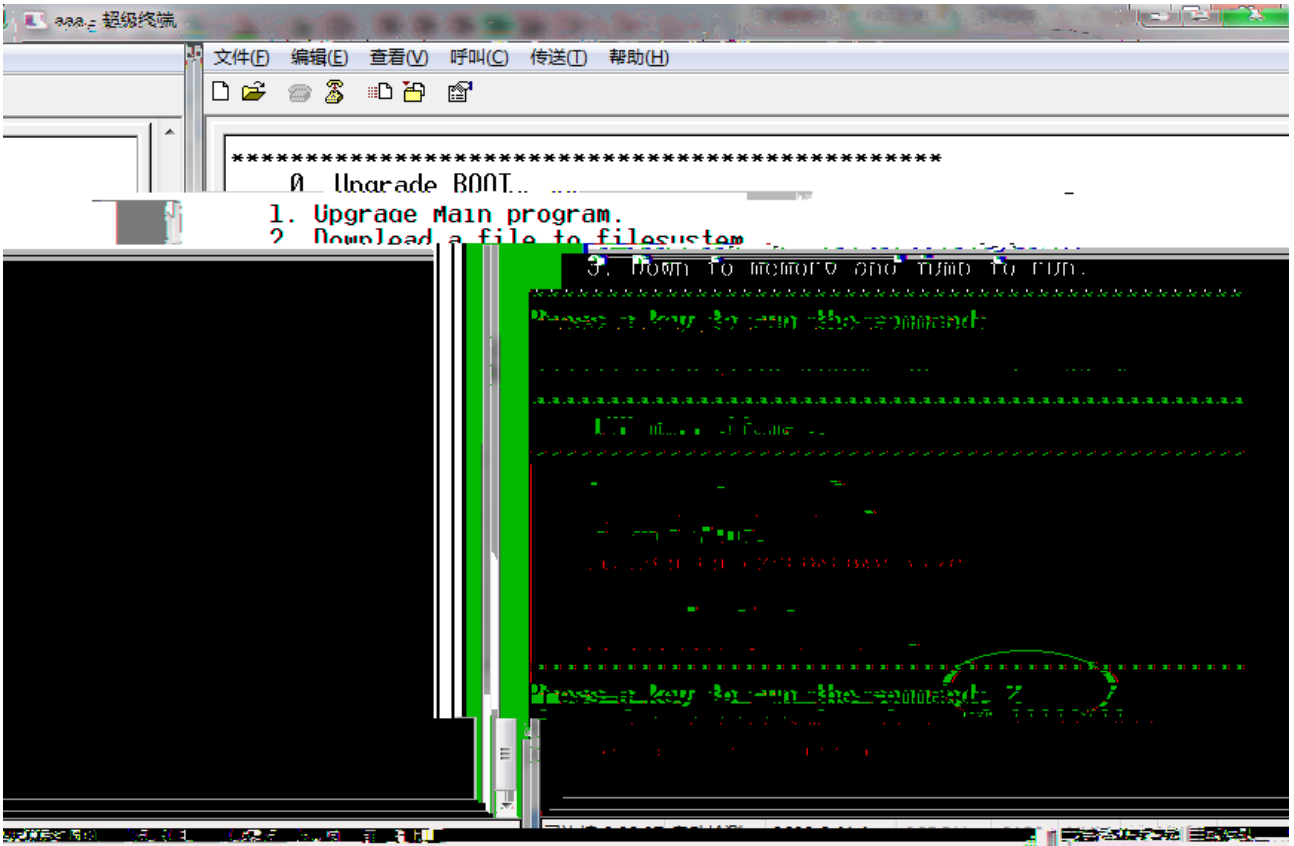
config.text

config.bak



3 ctrl+z

2

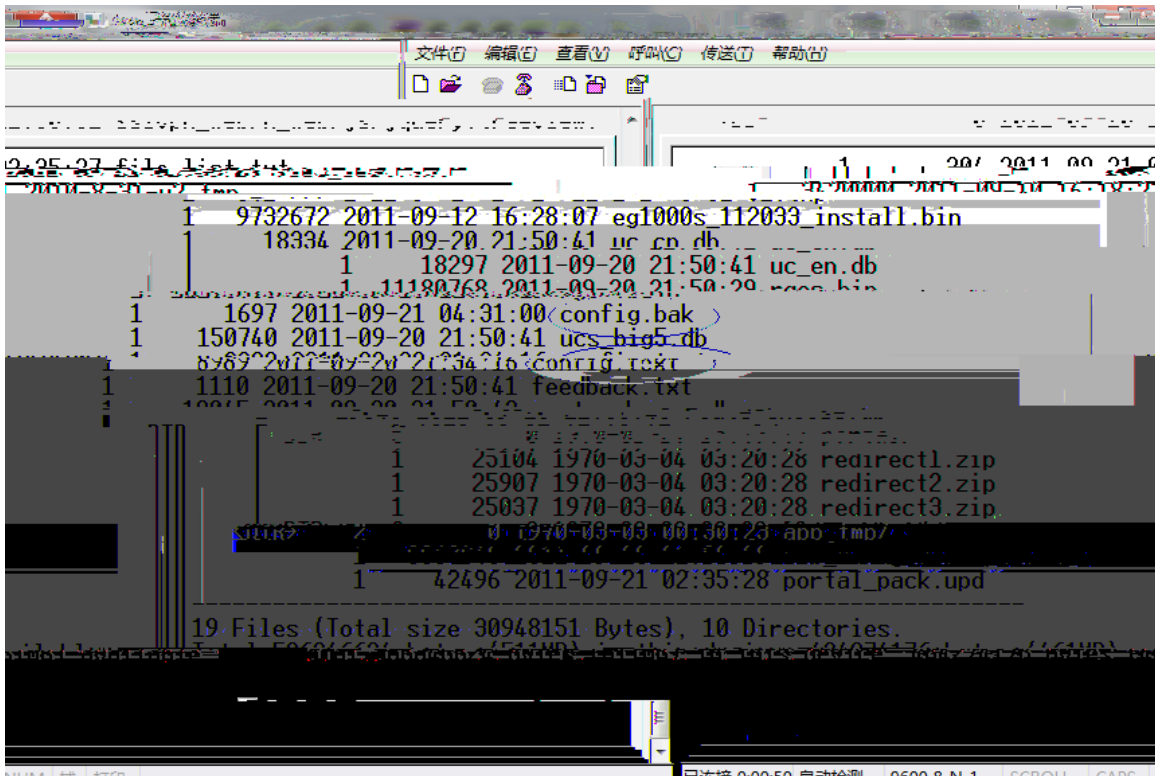


1.1.4

1

```
Ruijie>en
```

```
Ruijie#dir-----
```



2

config.bak

```
Ruijie#del config.txt
```

```
Ruijie#rename flash:config.bak flash:config.txt
```



```
Ruijie#
Ruijie#del config.text
config.text' is deleted.

#rename flash:config.bak flash:config.text
#copy st
#copy startup-config r
#copy startup-config running-config

EF-RNFP: delete arp-car rule failed
EF-RNFP: delete acpp rule failed
EF-RNFP: delete glean-car rule failed
EF-RNFP: delete acpp rule failed
*Sep 20 14:05:28: %SYS-5-CONFIG_I: Configured from console by console
Login disabled on line 1, until 'password' is set.
Login disabled on line 2, until 'password' is set.
Login disabled on line 3, until 'password' is set.
Login disabled on line 4, until 'password' is set.
Login disabled on line 5, until 'password' is set.
Ruijie#_
```

1.1.5 WEB

```
Ruijie#conf t
```

```
Ruijie(config)# webmaster level 0 username admin password admin
```

```
— admin
```

```
Ruijie(config)#exit
```

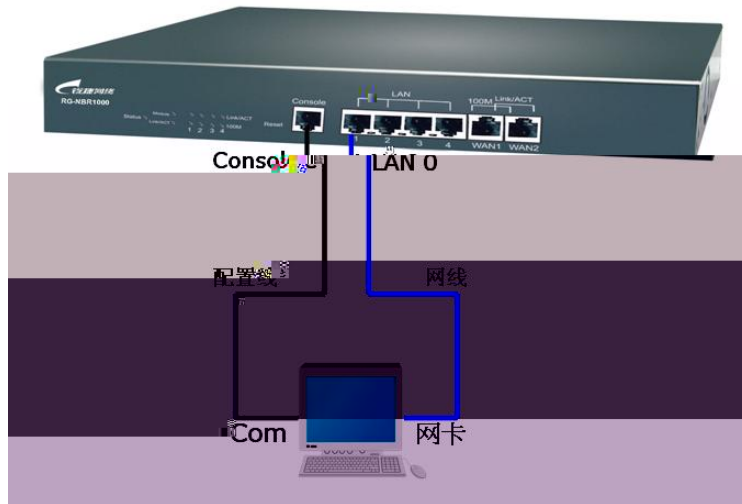
```
Ruijie#wr
```

1.2

1.2.1

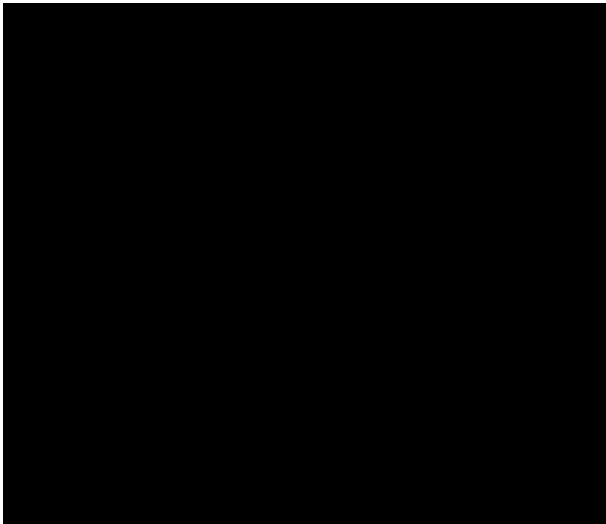
console

NPE



1.2.2

- 1 " " -----
 - 2
-



" "



" "

" "

2 ctrl+z

2

1.2.4

WEB

NPE

21
