

**RG-RCMS**



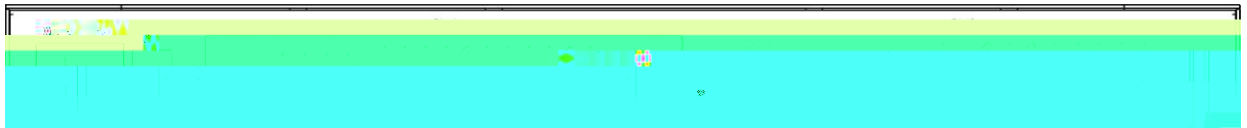
# 1.1 RCMS

RCMS RACK Control & Management Server

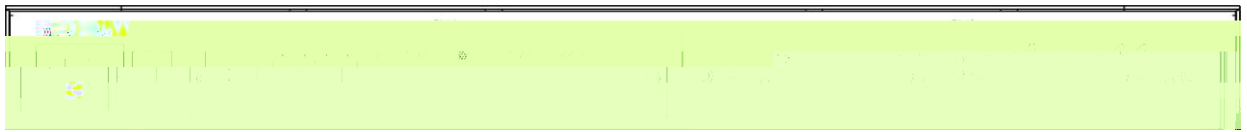
RCMS RCMS-8 RCMS-16



RCMS



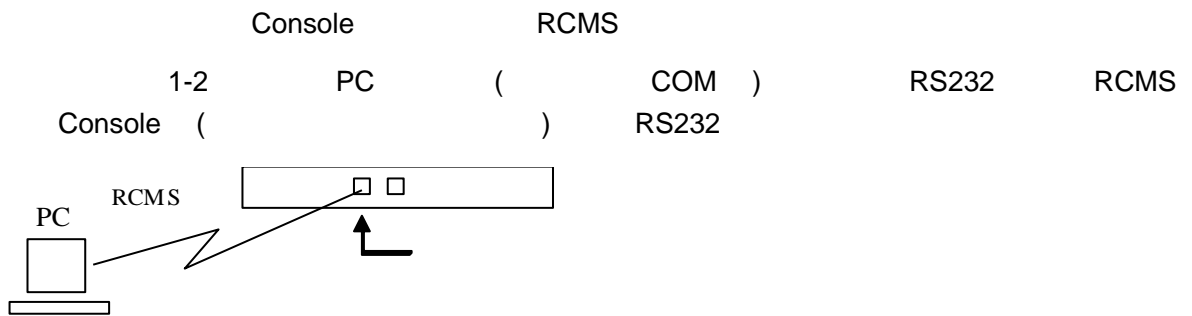
RCMS-8

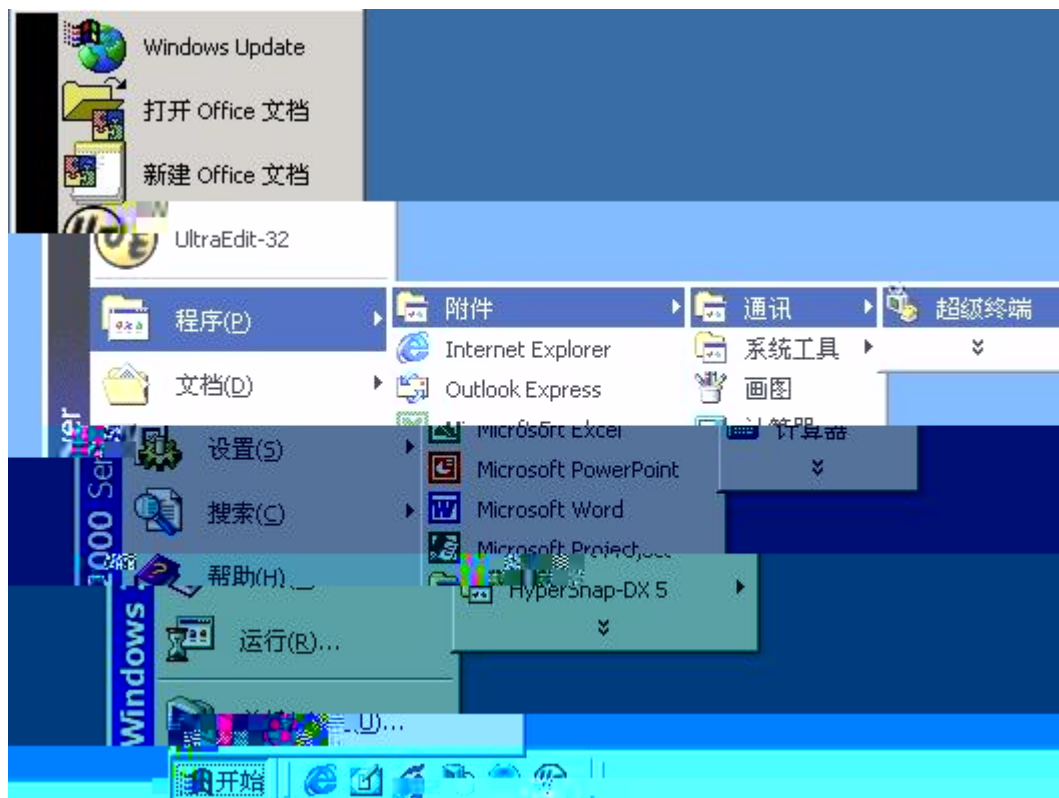


RCMS-16

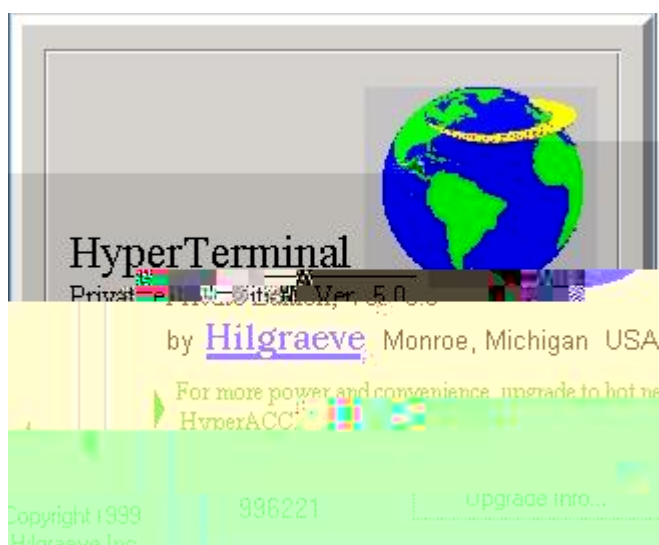
1-1 RCMS RCMS-8, RCMS-16

# 1.2

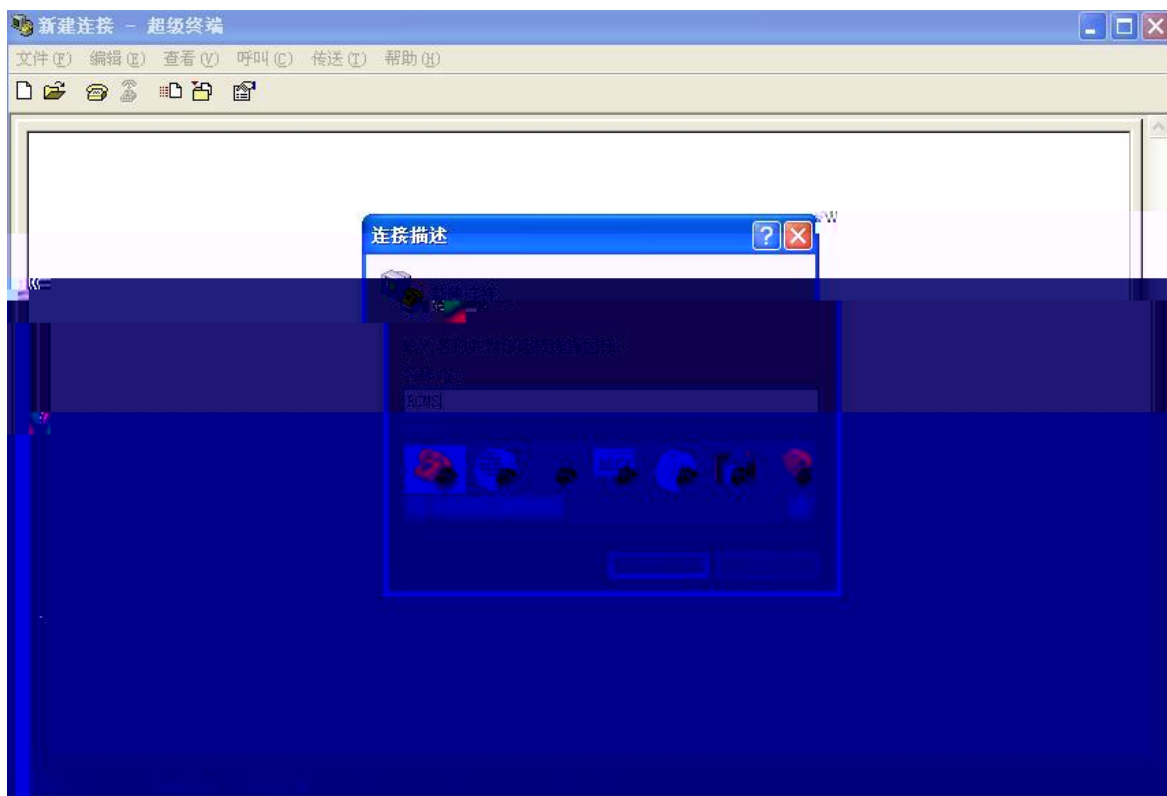




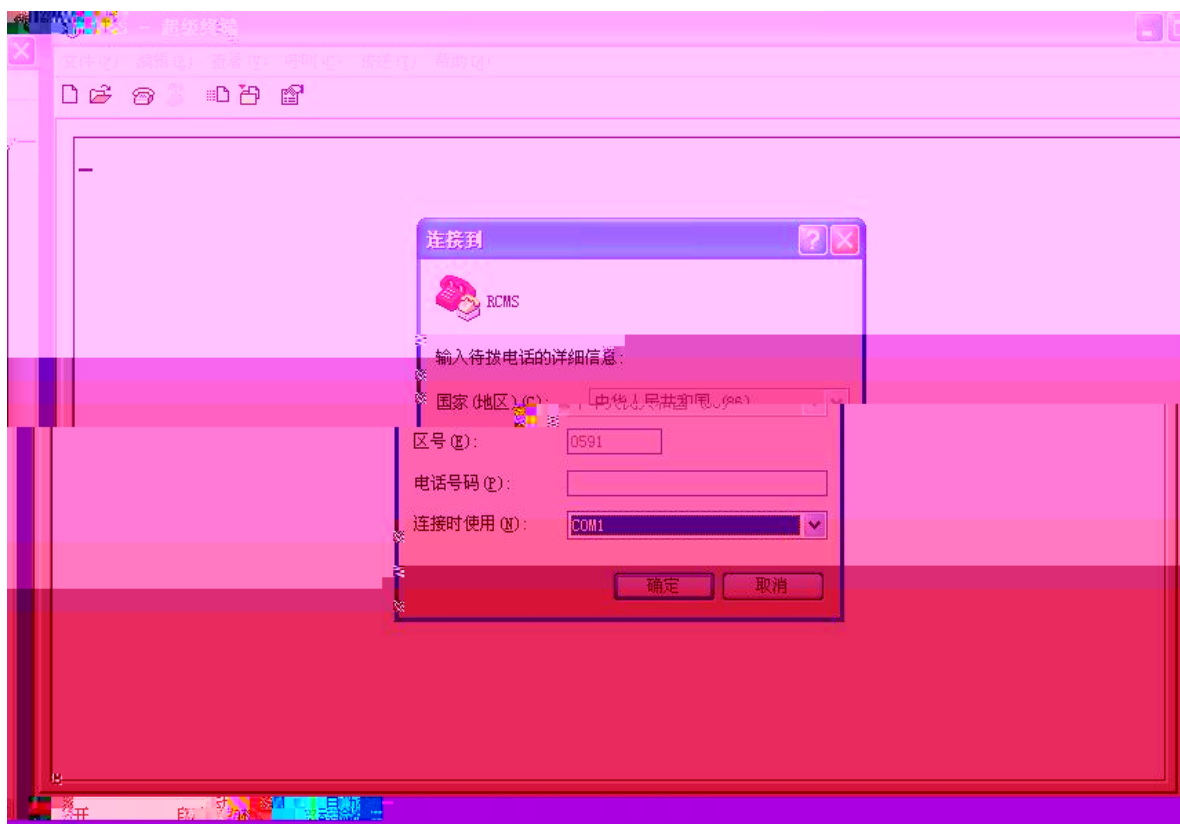
1-3



1-4



1-5



1-6

RCMS	Console	PC
PC	COM1	RCMS
	Console	COM1



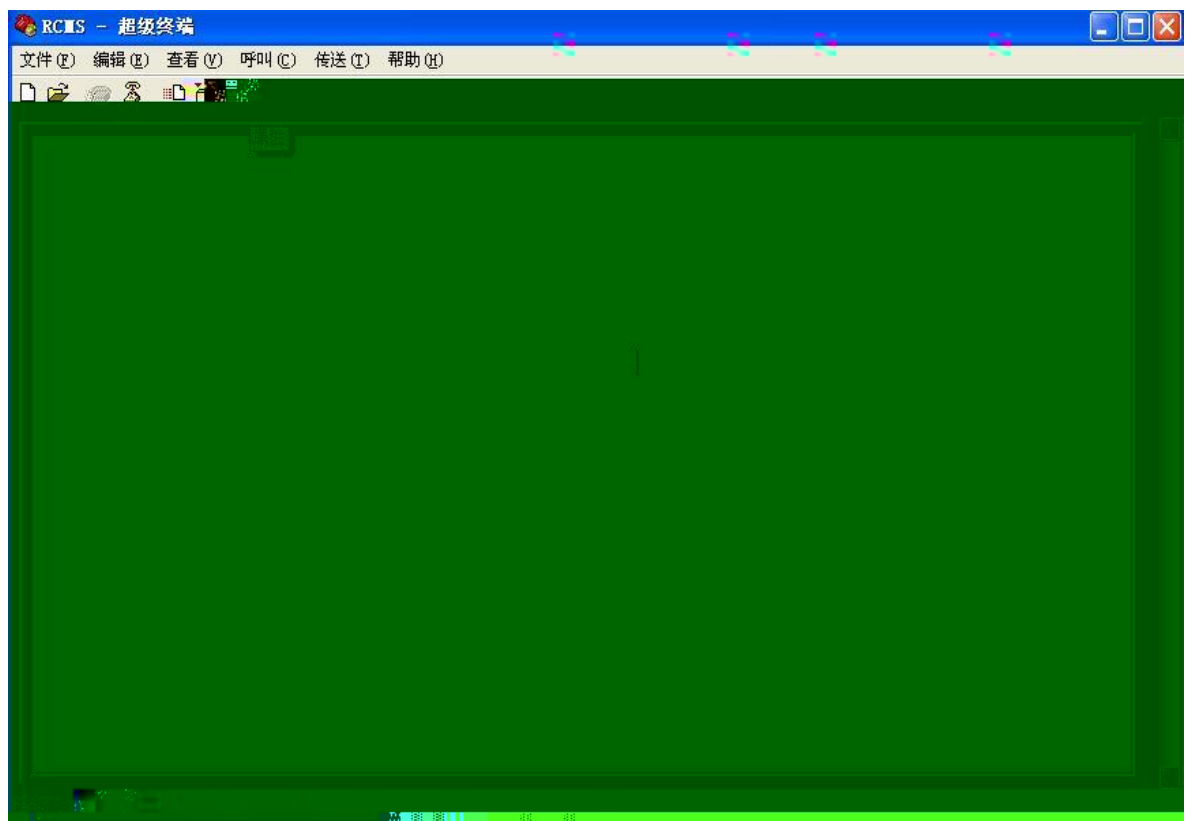
1-7 PC

Console

9600Bit/S

8

1



1-8

com



1-9

ANSI

RCMS

RCMS

### 1.3 RCMS

#### 1.3.1

RCMS

RCMS

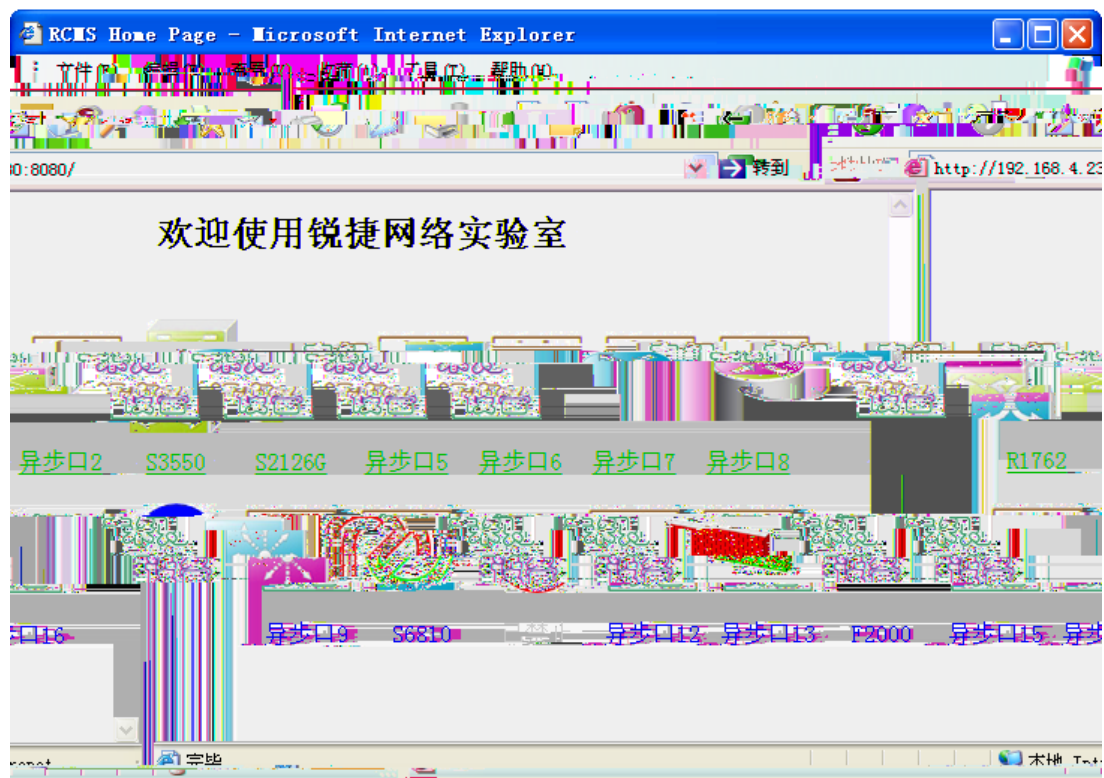
RCMS



RCMS

RCMS

### 1.3.2 RCMS



1 RCMS

RCMS

Telnet

Reverse

Telnet

Reverse Telnet

Reverse Telnet

ip host

### 1.4.2 RCMS

RCMS

banner incoming

1k

HTML

HTML

HTML



### 1.4.3

RCMS

ip host

Reverse Telnet

IP

RCMS

IP

m

R3660 Reverse Telnet

2013

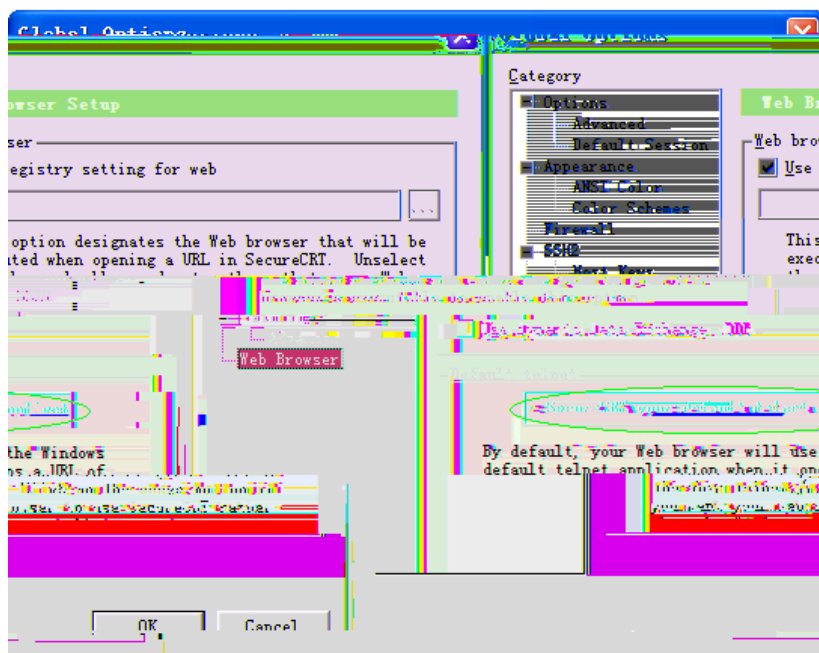
### 1.4.4

#### Telnet

Telnet

PC  
Options

SecureCRT



3 Telnet

### 1.5

RCMS

**1.5.1**

CLI

Red-Giant# <b>execute</b> {{flash:}filename} line_rcms_script.text	Reverse

RCMS

IP

192.168.1.1

1 4

RCMS

TTY

**login local**

AAA

**clear line**

Reverse Telnet

**telnet**

Reverse Telnet

**enable**

**password1 ~ password4**

**delete**

**reload**

y

n

