

RG-S5750-28GT-S

V1.25

2022-06-29

copyright © 2022



•

•

•

•

•

• 7*24h

• 7*24h

•

•

•



APP

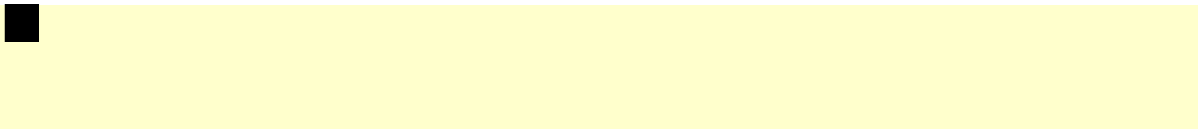


4008-111-000

4008111000@ruijie.com.cn

doc@ruijie.com.cn

1.






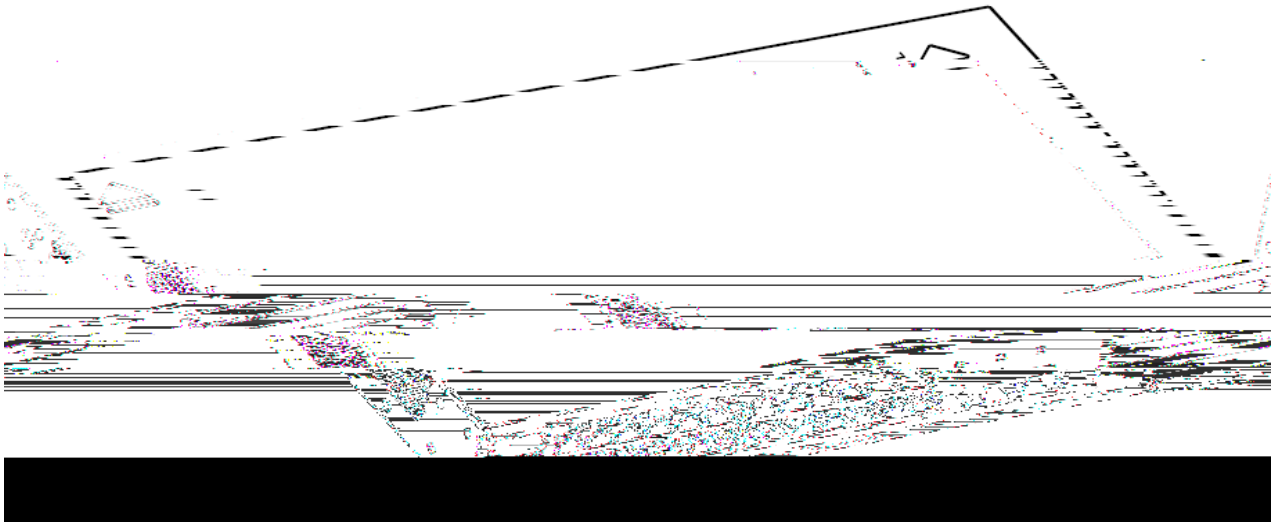
2.

1

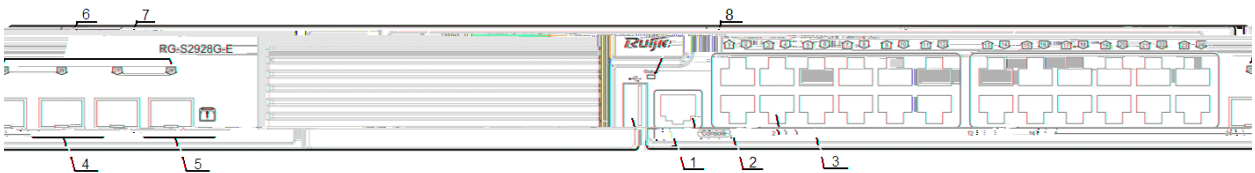
RG-S5750-28GT-S

" " " " " " " "

SFP	1000Base-X 1000Base-T 2.5G SFP  RG-S5750-28GT-S V2.00	SFP	100Base-FX
USB	1 A USB2.0		
	<ul style="list-style-type: none"> ■ AC 100-240V~ 90-264V~ 50-60Hz 0.6A ■ HVDC NA 192-290V 0.2-0.12A 		
EEE	RG-S5750-28GT-S V1.00 RG-S5750-28GT-S V2.00		
POE			
	RG-S5750-28GT-S V1.00	<33W	
	RG-S5750-28GT-S V2.00	<27W	
	0°C 50°C		
	-40°C 70°C		
	10% 90% RH		
	5% 90% RH		
EMC	GB/T 9254.1-2021		
	GB 4943.1-2011		
x x	RG-S5750-28GT-S V1.00	440x200x43.6	
mm	RG-S5750-28GT-S V2.00	440x260x43.6	
kg	3.5 kg		



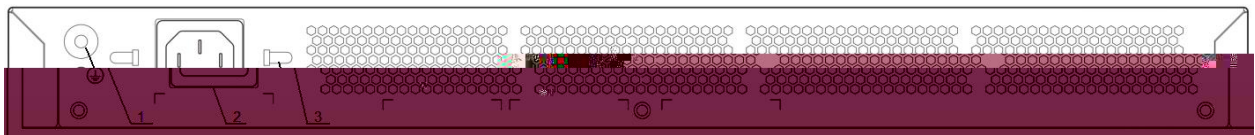
1-2 RG-S5750-28GT-S



1	USB2.0	5	100Base-FX /1000Base-X SFP /2.5G
2	RJ45 Console	6	10/100/1000Base-T
3	RJ45 10/100/1000Base-T	7	10/100/1000Base-T
4	100Base-FX /1000Base-X SFP	8	100Base-FX/1000Base-X SFP/2.5G

 RG-S5750-28GT-S V2.00 SFP 100Base-FX

1-3 RG-S5750-28GT-S



1

RG-S5750-28GT-S

- AC
 - 100-240V~
 - 90-264V~
 - 50-60Hz
 - 0.6A
 - 10A
- HVDC
- NA
- 192-290V
- 0.2-0.12A
- 10A

RG-S5750-28GT-S

10cm

2

2.1



RG-S5750-28GT-S



2.1.1

-
-
-
-

2.1.2

-
-
-

2.1.3

- -
 -
 -
 -
 -
-
-

-
-
-

RG-S5750-28GT-S

0°C-50°C	10%-90%



1.5m



0.4m

2.2.3

0.5μ m	/ m ³	3.5× 10 ⁶
5μ m	/ m ³	3× 10 ⁴

	(mg/m ³)	(mg/m ³)
SO ₂	0.3	1.0
H ₂ S	0.1	0.5
NO ₂	0.5	1.0
Cl ₂	0.1	0.3



30

2.2.4

■ TN PE

■

■

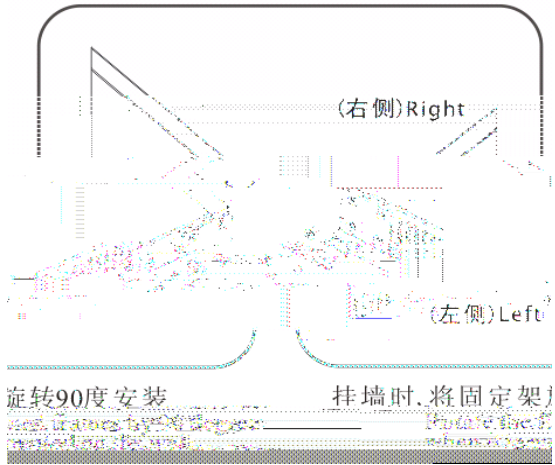
■

2.2.5

RG-S5750-28GT-S

3.3 RG-S5750-28GT-S

-



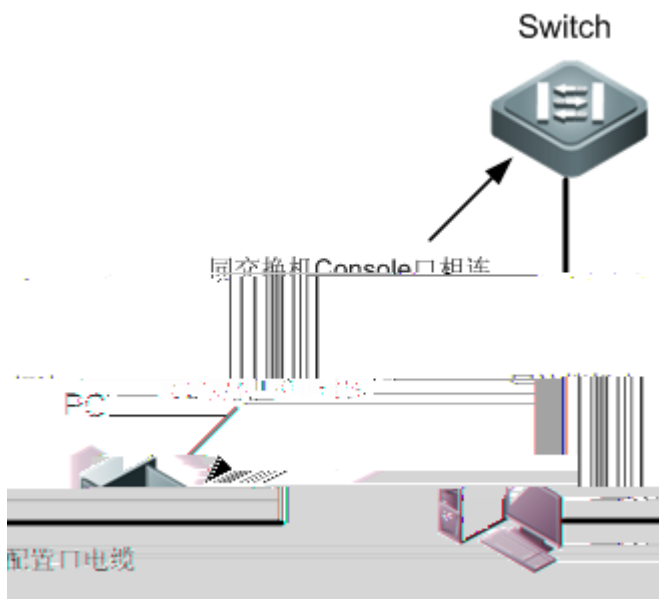
3.4

-
-
-
-
-

4

4.1

PC Console 4-1
4-1



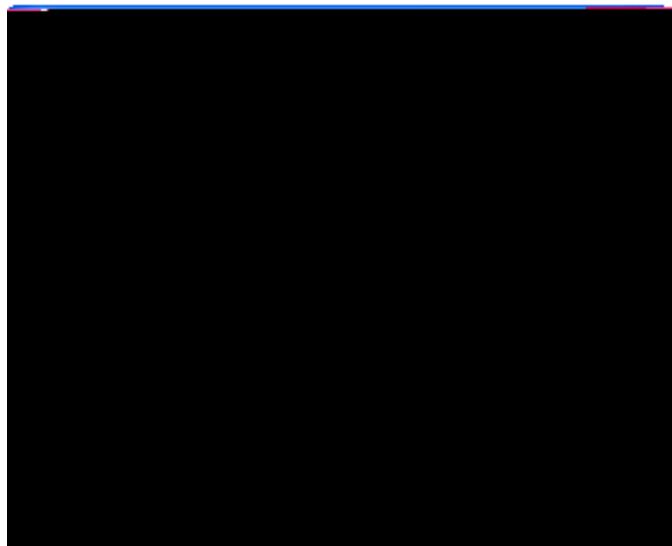
- DB-9 PC
- RJ-45 Console
- PC PC Windows3.1 Terminal Windows 95/98/NT/2000/XP
- 9600 8 1
- 1) " " " " " " " " " " 4-2

4-2



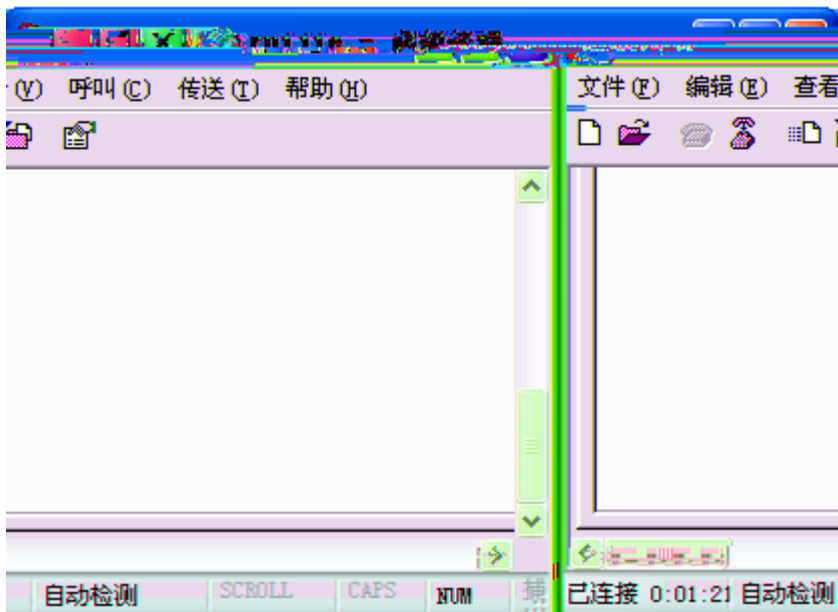
2) " " 4-3

4-3



3) < > 4-4

4-4



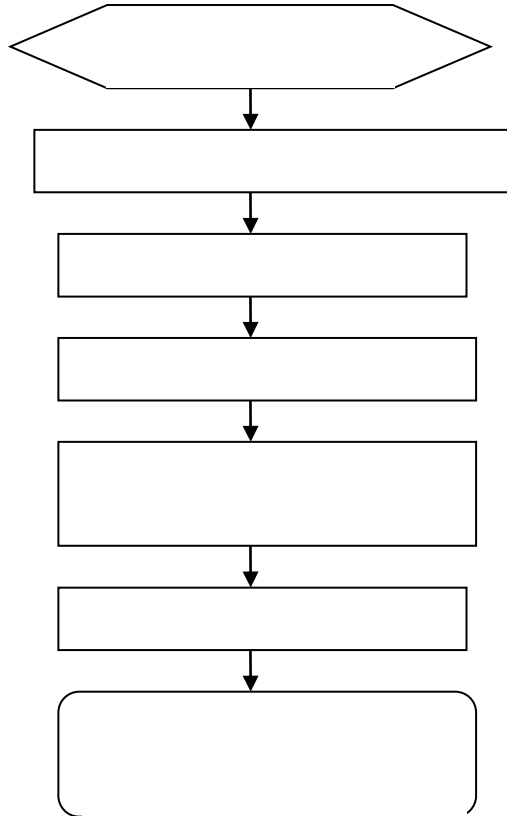
4.2

-
-
-
- PC console

-
-
-
-

5

5.1



5.2

status		
Status		

RJ45	100	

Switch

1 IRD +

2 IRD

Adnter

1 OTD +

Switch

1 IRD +

Switch

1OTD +

B Mini-GBIC

SFP

SFP
SFP

Mini-GBIC

Mini-GBIC SFP

Mini-GBIC(SFP)	(nm)	
------------------	--------	--

C

