

# RG - AP520(DA)

V1.02

copyright © 2018



”

<http://www.ruijie.com.cn/>

”

<http://webchat.ruijie.com.cn>

”

<http://www.ruijie.com.cn/service.aspx>

” 7× 24

4008-111-000

”

<http://bbs.ruijie.com.cn/portal.php>

”

# 1

RG-AP520(DA)  
RG 5P) &SfD5L

AP520(DA)

) S° ~+S°

## 1.1 RG-AP520(DA)

---

2.4G

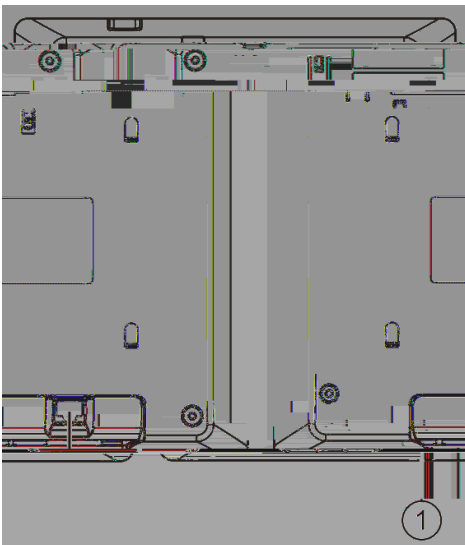


	—			AP
	3Hz	2	2	AP AP

ap

	—			AP /
	3Hz			AP
	3Hz			AP Link down
	3Hz			AP
	—			AP
		16	/min	AP
	—			AP
	3Hz	2	2	AP AP

1-2



1000BASE-T/100BASE-TX/10BASE-T

PoE

RG-AP520(DA)

PoE

PoE

802.3af/802.3at

RG-AP520(DA)







## 2.5

RG-AP520(DA)

### 2.5.1

”

”

RG-AP520(DA)

”

RG-AP520(DA)

### 2.5.2

RG-AP520(DA)

### 2.5.3

RG-AP520(DA)

”

>

>

H <sub>2</sub> S	0.006	0.03
NO <sub>2</sub>	0.04	0.15
NH <sub>3</sub>	0.05	0.15
Cl <sub>2</sub>	0.01	0.3

## 2.5.5

„ DC44-57V 0.3A 15W

„ PoE 802.3af/802.3at PoE

RG-AP520(DA)

12.95W

a

a PoE

## 2.5.6 EMI

„

„

## 2.6


## 2.7



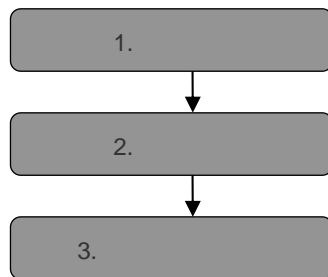
### 3

RG-AP520(DA) AP

---

---

#### 3.1



#### 3.2

RG-AP520(DA)

”

”

”

”

”

”

”

#### 3.3

AP

”

”

”

”

”

”

”

”

”

”

”

”

### 3.4

---

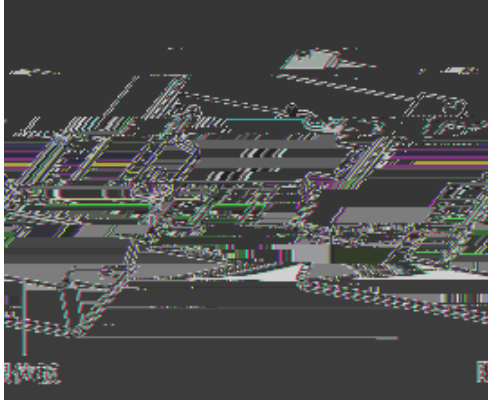
---

RG-AP520(DA)

RG-AP520(DA)\_bracket

Z

3-1 €



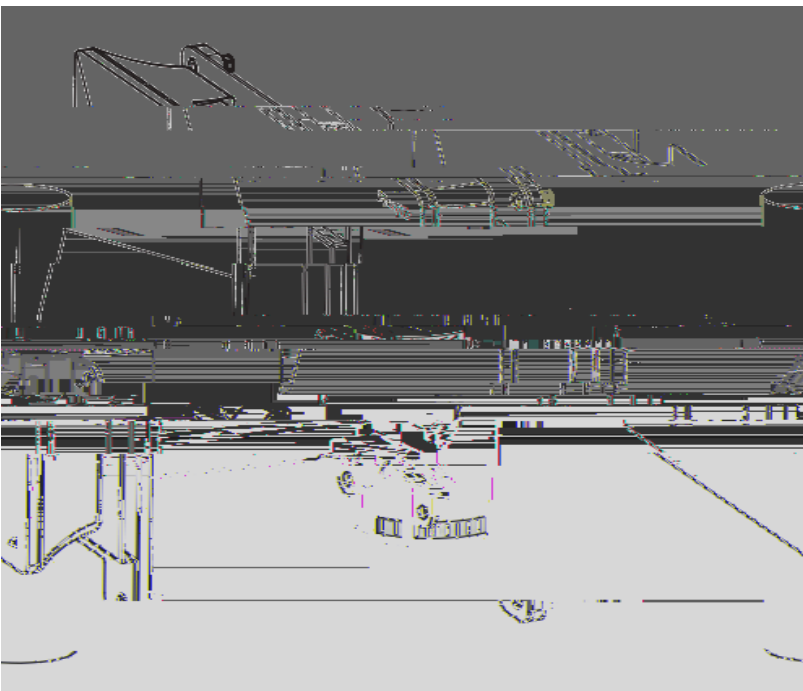


b

AP

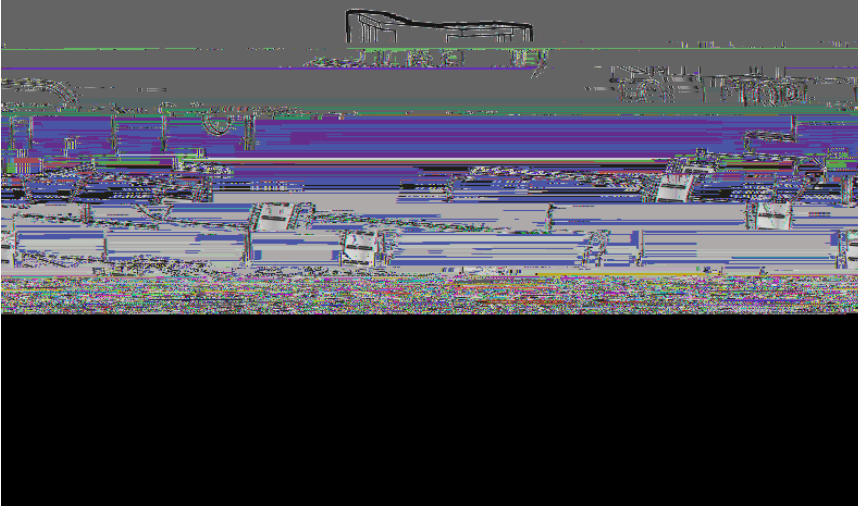
M8× 40

3-7

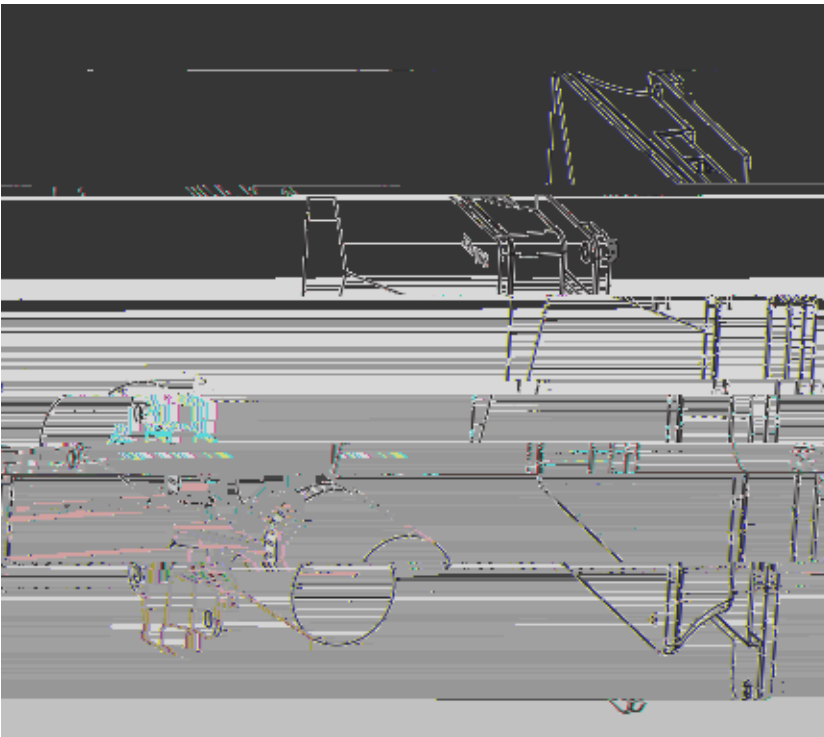


z

3-8



3-9



---

### 3.5 AP

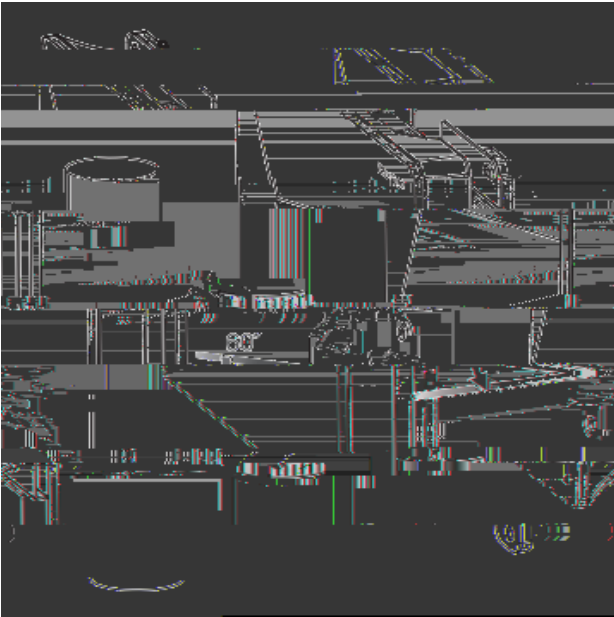
RG-AP520(DA)

AP

z RG-AP520(DA)

3-10

-60°



3-11

+60°

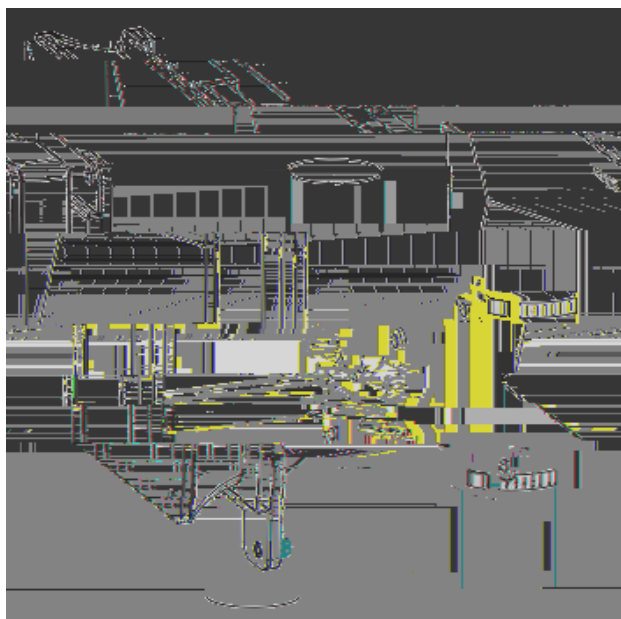


3-12

0°

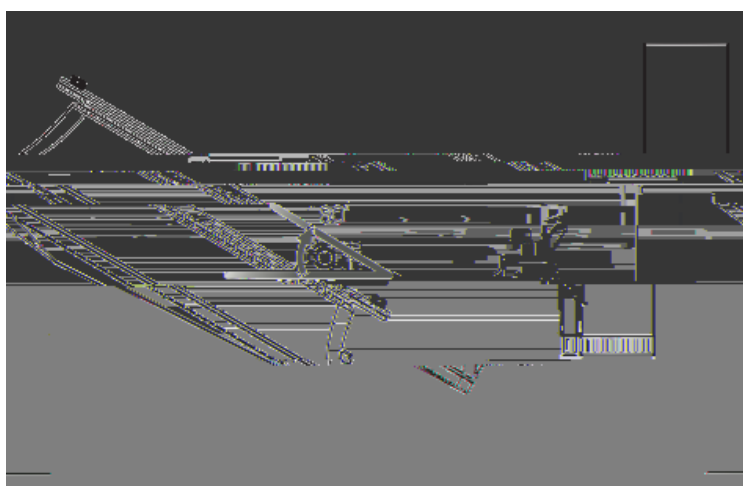
-60°

60°



3-13

+60°



0° 90°

a

" Ruijie" logo

a

a

### 3.6

AP LAN/PoE

AP

A

a

Ruijie" logo• áÿ e Å

a

a RG-AP520(DA)

RG-AP520(DA)

---

### 3.7

”

”

”

1)

LAN/PoE

Z

Z

### 3.8

”

”

”

”

”

”

”

”

AP

# 4

## 4.1

PoE AP

” PoE AP

” AP AC

” PC AP PC PoE

## 4.2

”

” AP

” AP AC

” AP

## 5

### 5.1

RG-AP520(DA)

” AP

” AP Link down

” AP CAPWAP

” AP

” AP CAPWAP

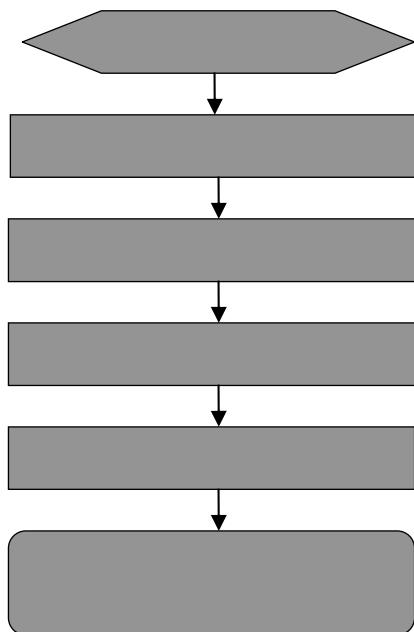
” 16 /min AP CAPWAP

” AP

” 2 2 AP

## 6

### 6.1



### 6.2

„ PoE PoE 802.11af  
”

**AP**

1)

1)

z AP

z AP

1

10

CAPWAP

AC

AP

AC

# A — —

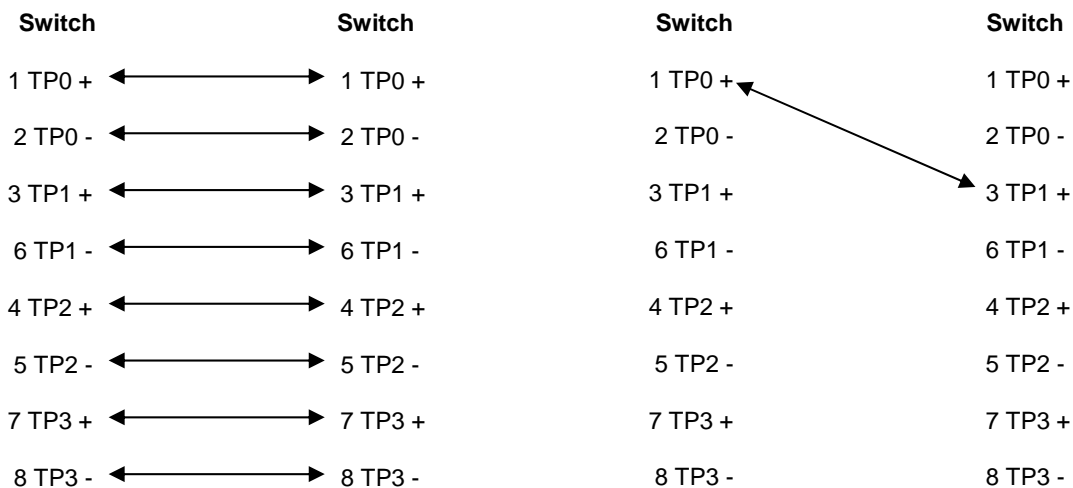
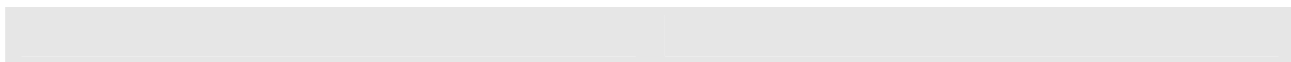
## 1000BASE-T/100BASE-TX/10BASE-T

1000BASE-T/100BASE-TX/10BASE-T

MDI/MDIX Crossover

1000BASE-T	IEEE 802.3ab	100-ohm 5	5	UTP	STP
	100				
1000BASE-T	4	4	1000BASE-T		

A-1 1000BASE-T



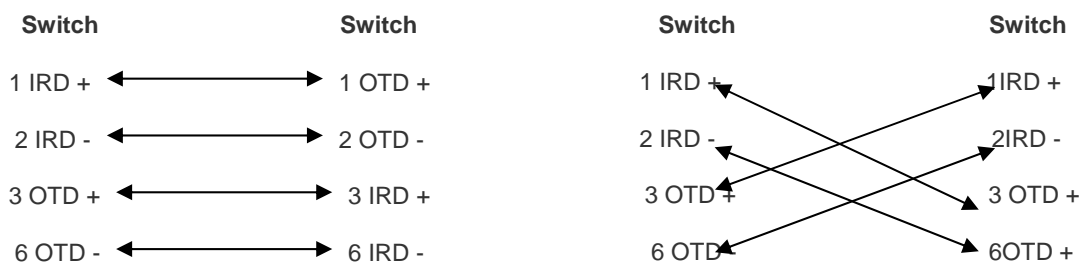
100BASE-TX/10BASE-T		10Mbps	100-ohm 3 4 5
100Mbps	100-ohm 5	100	100BASE-TX/10BASE-T

A-2 100BASE-TX/10BASE-T

Pin		
1	Input Receive Data+	Output Transmit Data+
2	Input Receive Data-	Output Transmit Data-
3	Output Transmit Data+	Input Receive Data+
6	Output Transmit Data-	Input Receive Data-
4 5 7 8	Not Used	Not Used

100BASE-TX/10BASE-T

A-3 100BASE-TX/10BASE-T



— —

RG-AP520(DA)

”		5	
”	7		
”		7	10
”	SFP+	5	10
”			
”		D-1	
D-1			
”			
”		30mm	
”			
”			
”			
”			D-2

D-2

”

D-3

D-3

”

” 220V -48V

”

”

7 9  
8 :

”

”

”

”

( mm )	( mm )
10	80~150
10~30	150~200
30	200~300

”

”