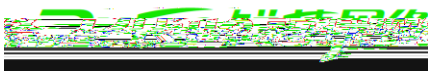


RG-

©2010



Ruijie



锐捷®

RG-EG

RG-EG 10.3 4T90

2012-4-10	V1.0	

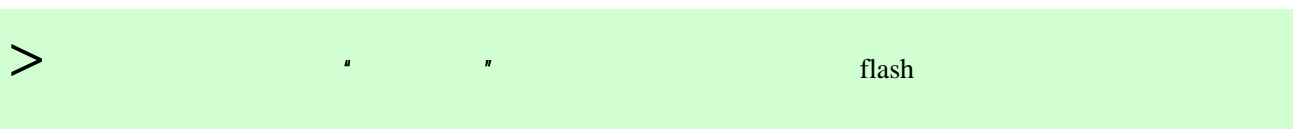
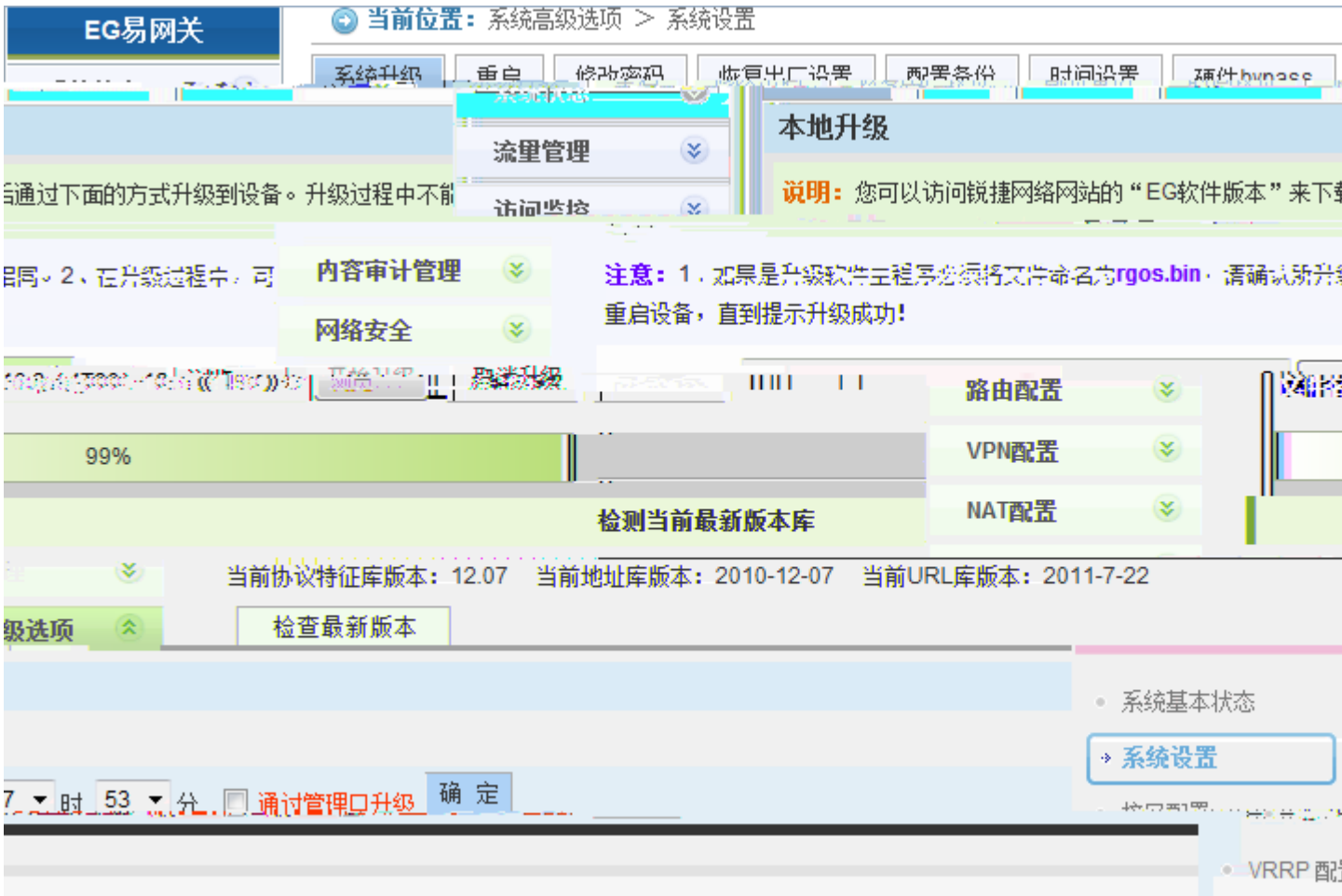
/	

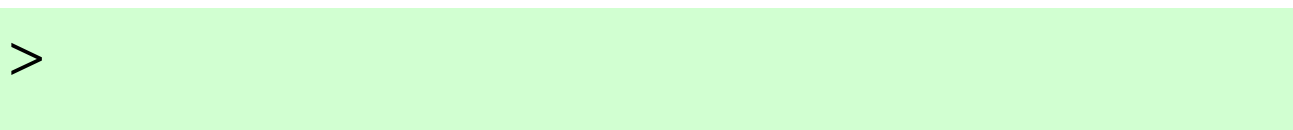
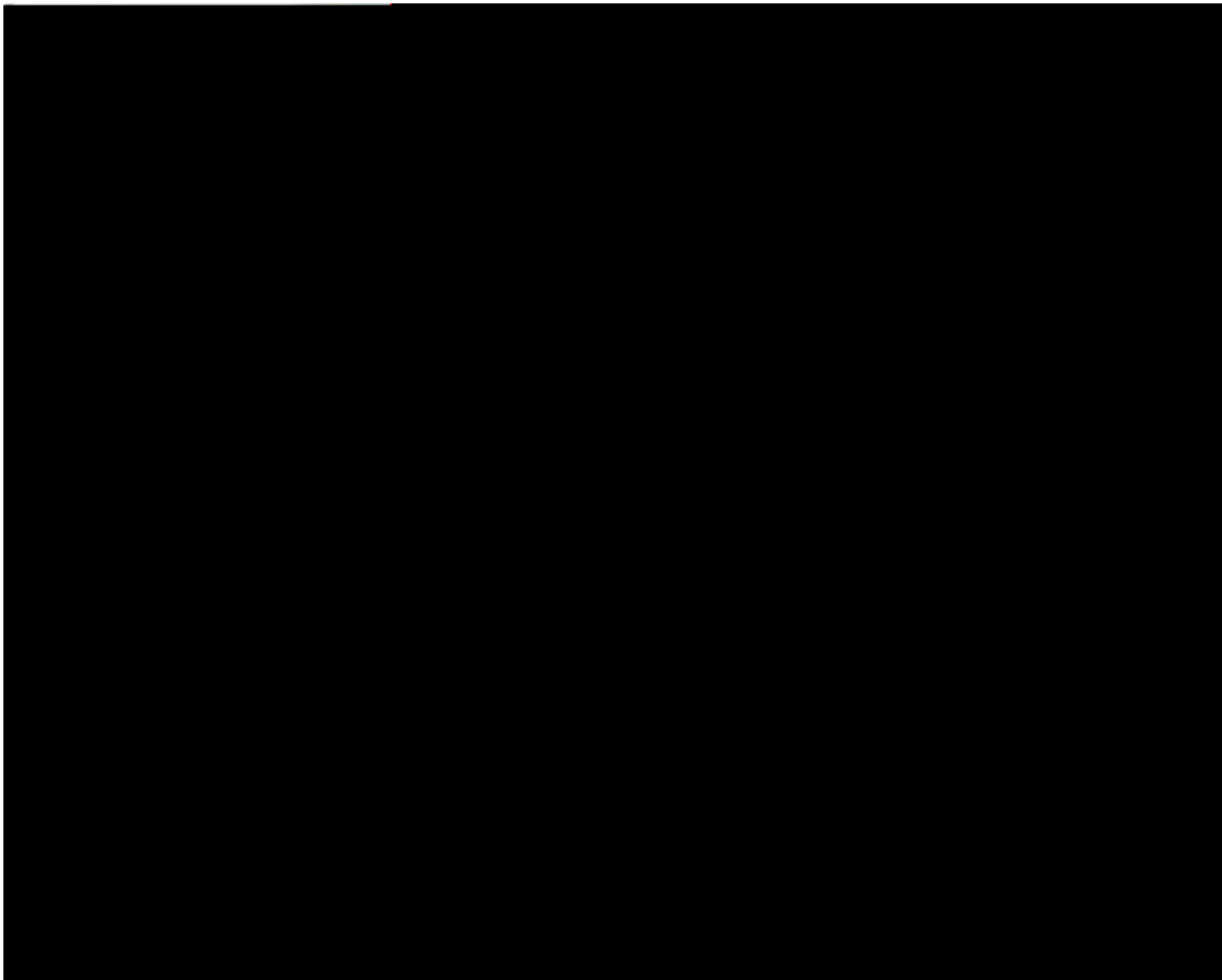
	6
WEB	7
WEB	7
	7
	7
	8
	9
WEB	10
EG	WEB	10

CRTL	23
console	23
.....	23
startftp	24
.....	24
ctrl	28
.....	33

WEB

WEB





WEB

EG

WEB

MGMT

IP

IP

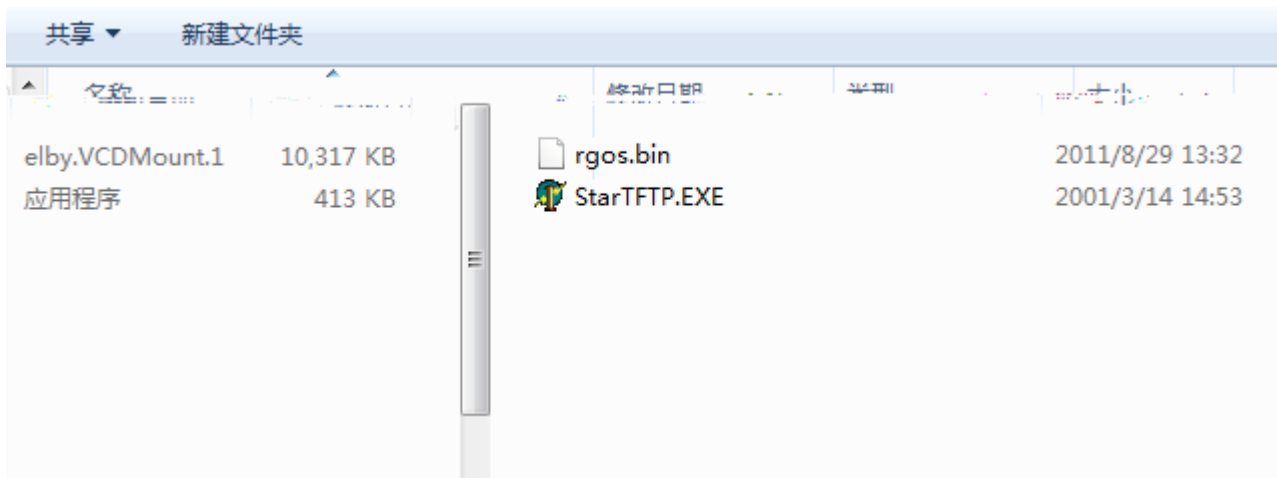
MGMT

IP

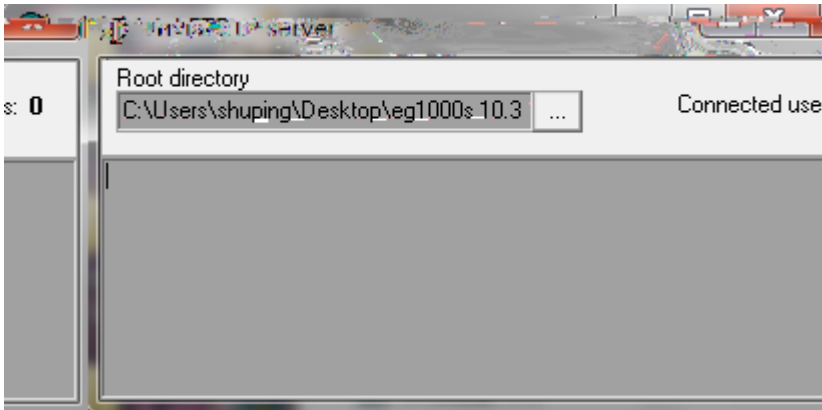
EG

rgos.bin

startftp.exe TFTP



startftp

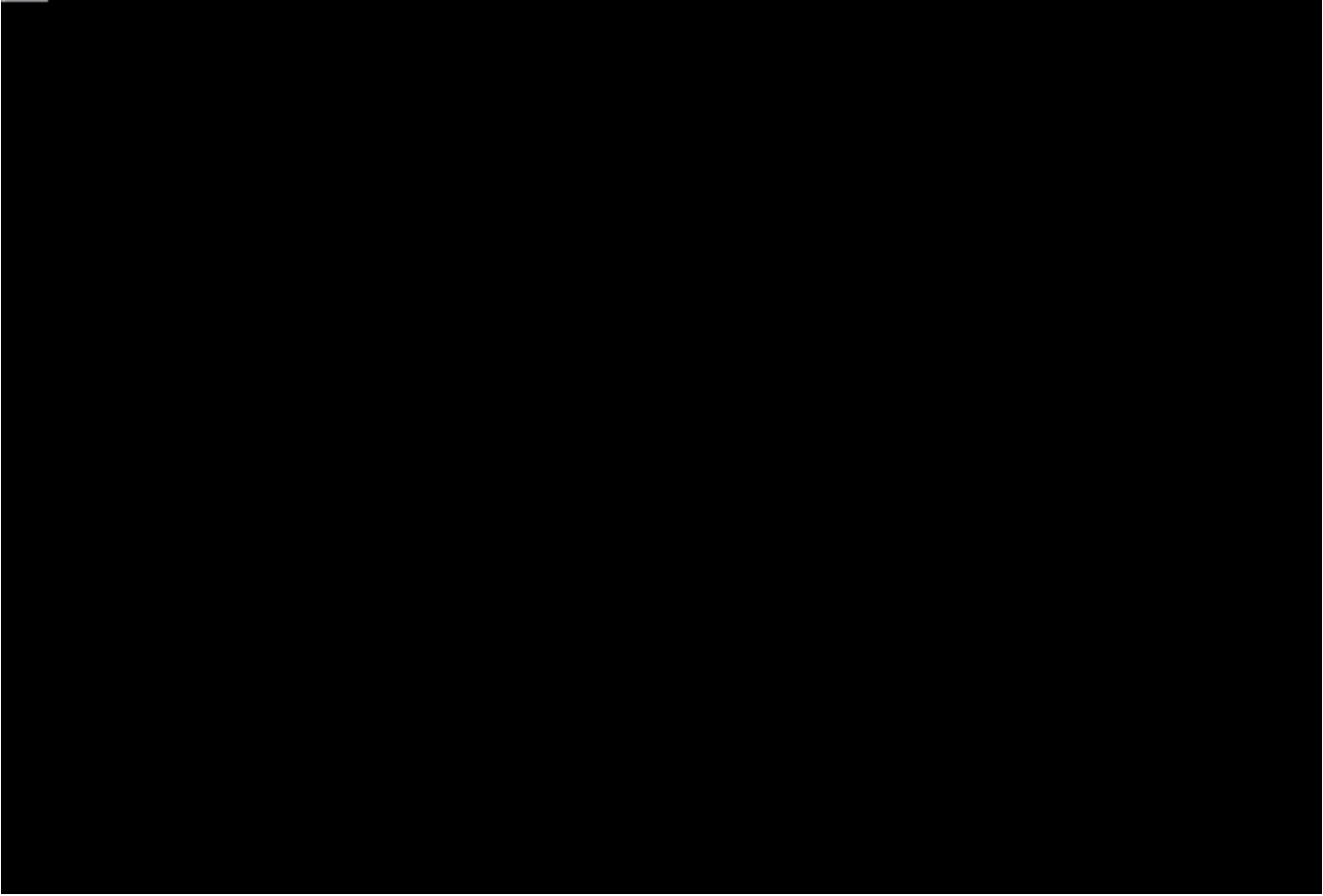


? windows startftp

telnet/console EG

> EG ip 192.168.1.1

copy ftp://192.168.1.10/rgos.bin flash:rgos.bin 192.168.1.10 IP

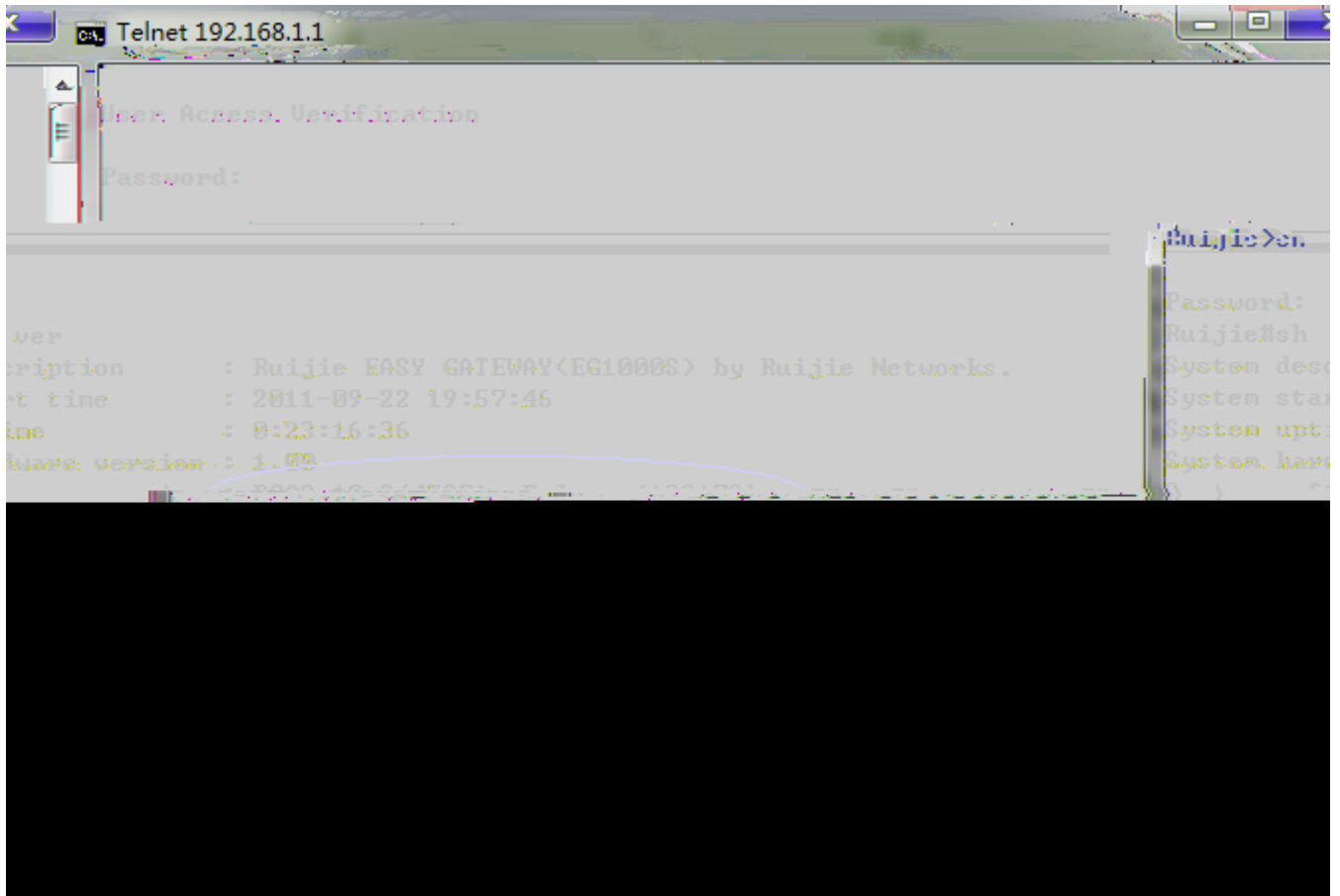


WR

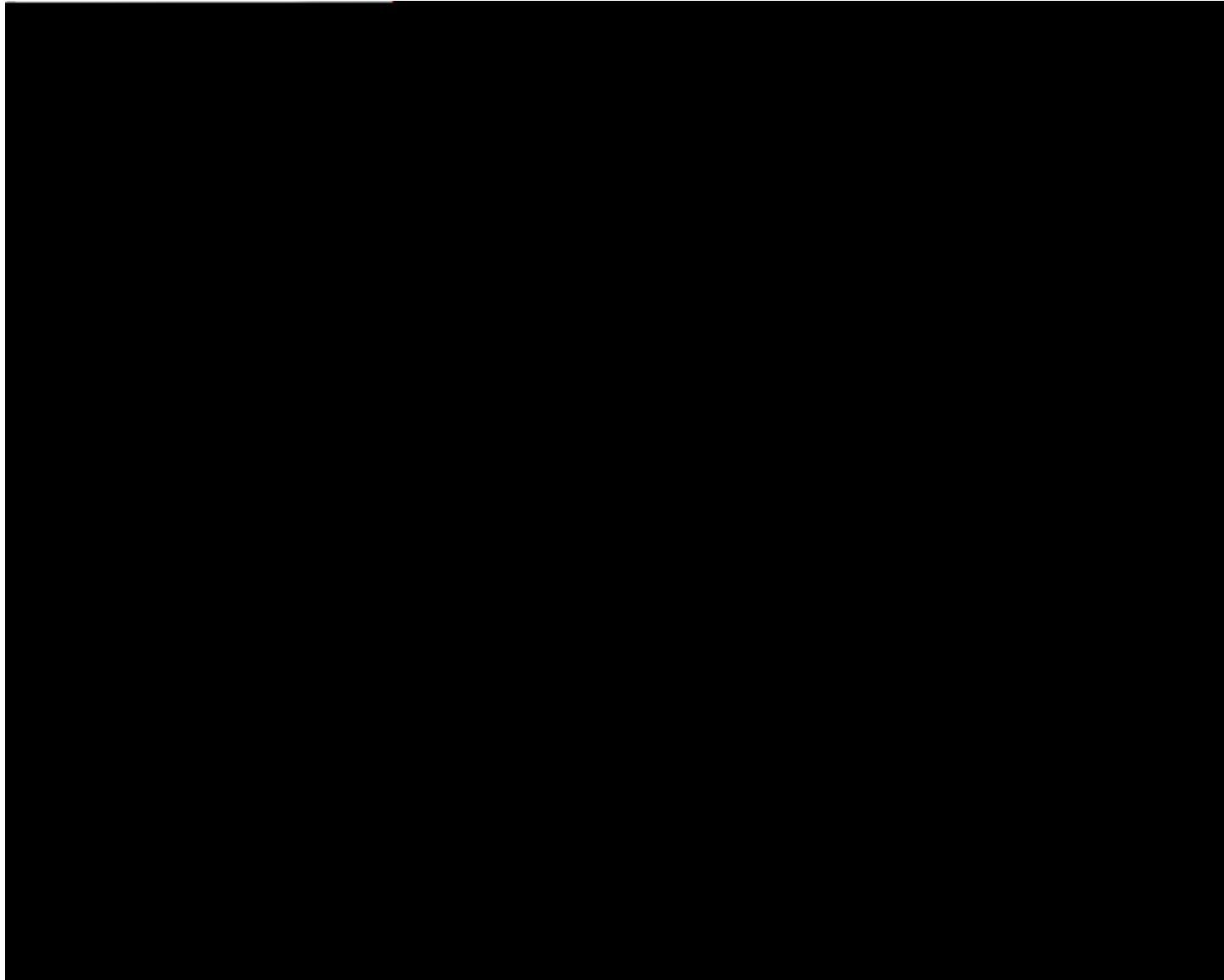
```

Ruijie#ping 192.168.1.10
Sending 5, 100-byte ICMP Echoes to 192.168.1.10, timeout is 2 seconds:
< press Ctrl+C to break >
!!!!
Success rate is 100 percent (5/5), round-trip min/avg/max = 1/1/1 ms
Ruijie#copy tftp://192.168.1.10/rgos.bin flash:rgos.bin
Accessing tftp://192.168.1.10/rgos.bin...
Check file success.
Release(122172)
THE PROGRAM VERSION: RGOS 10.3.*
Upgrade Master CM main program OK
CURRENT PRODUCT INFORMATION :
PRODUCT ID: 0x10110010
PRODUCT DESCRIPTION: Ruijie EAS
SUCCESS: UPGRADING OK.
Ruijie#wr
Building configuration...
[OK]
Ruijie#reload
Processed with
```

sh ver

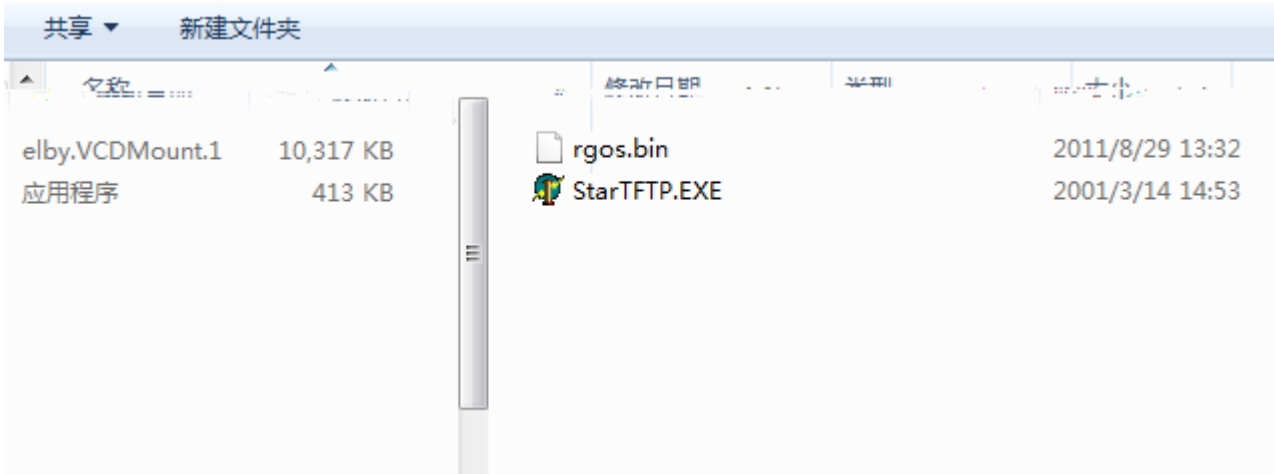


WEB

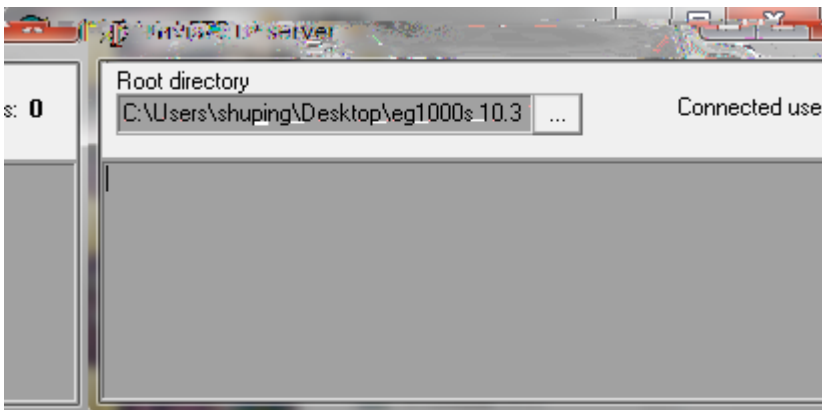


rgos.bin

startftp.exe TFTP



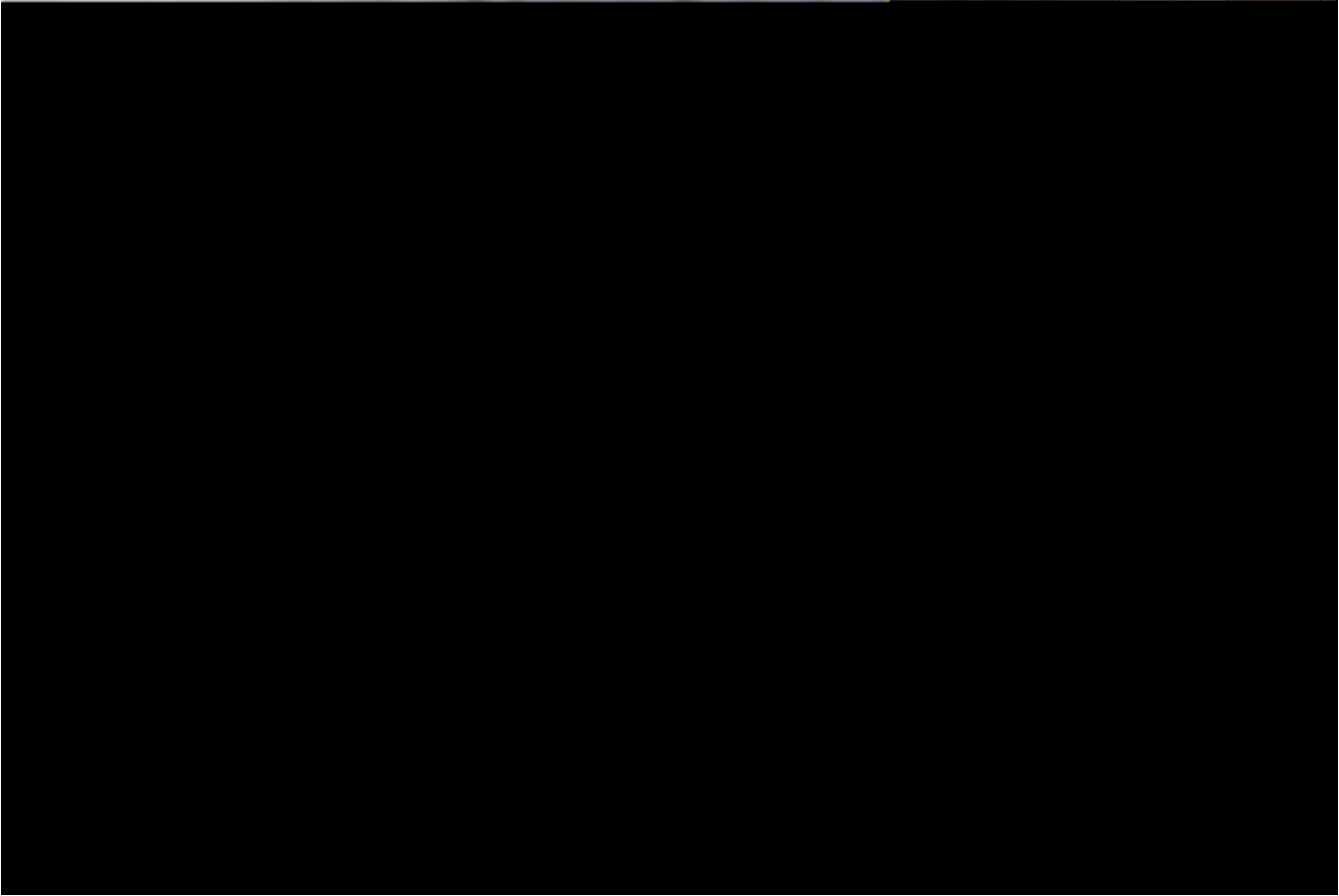
startftp



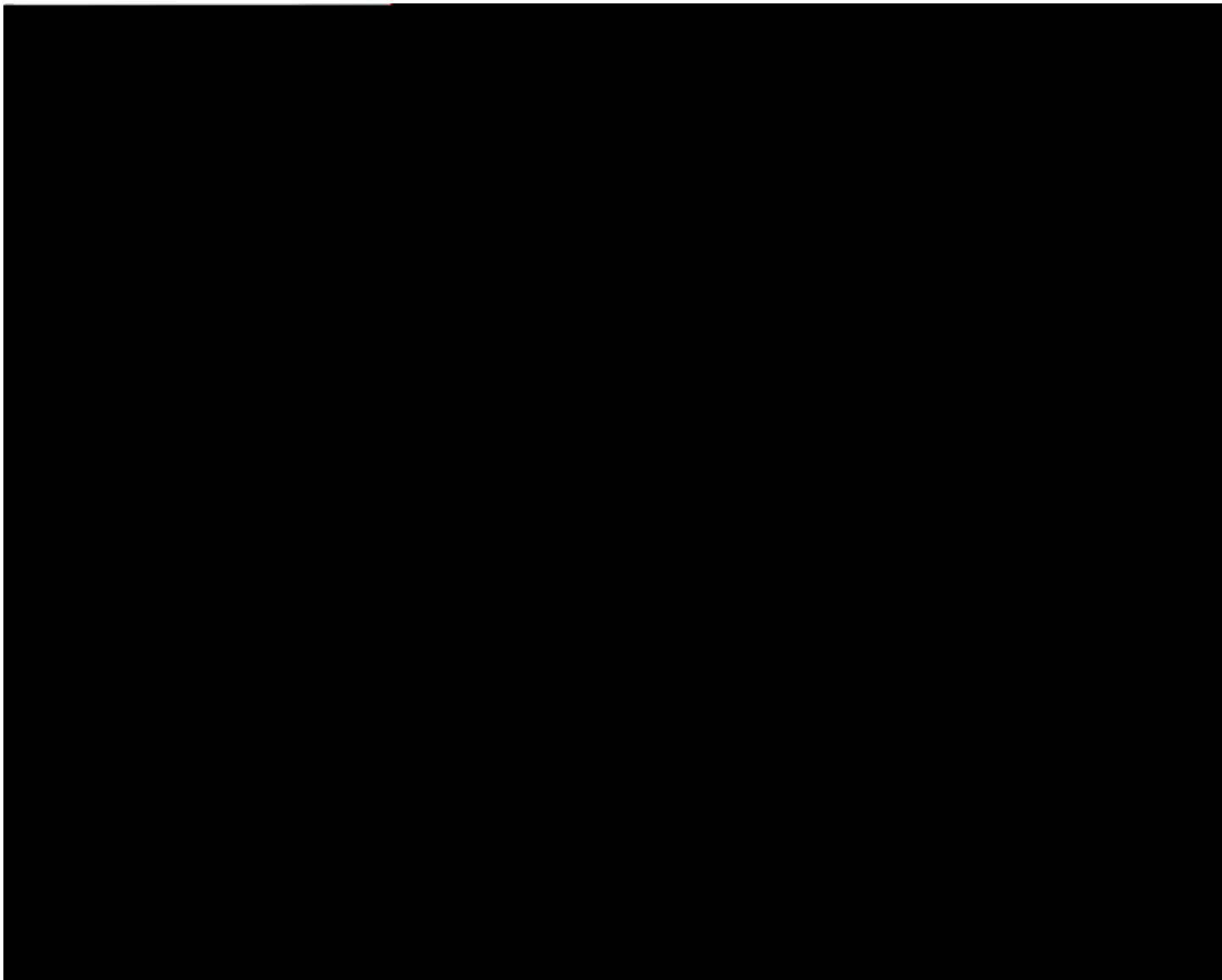
windows

startftp

WR

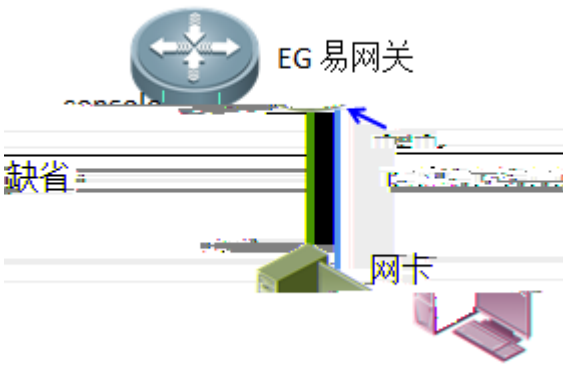


sh ver

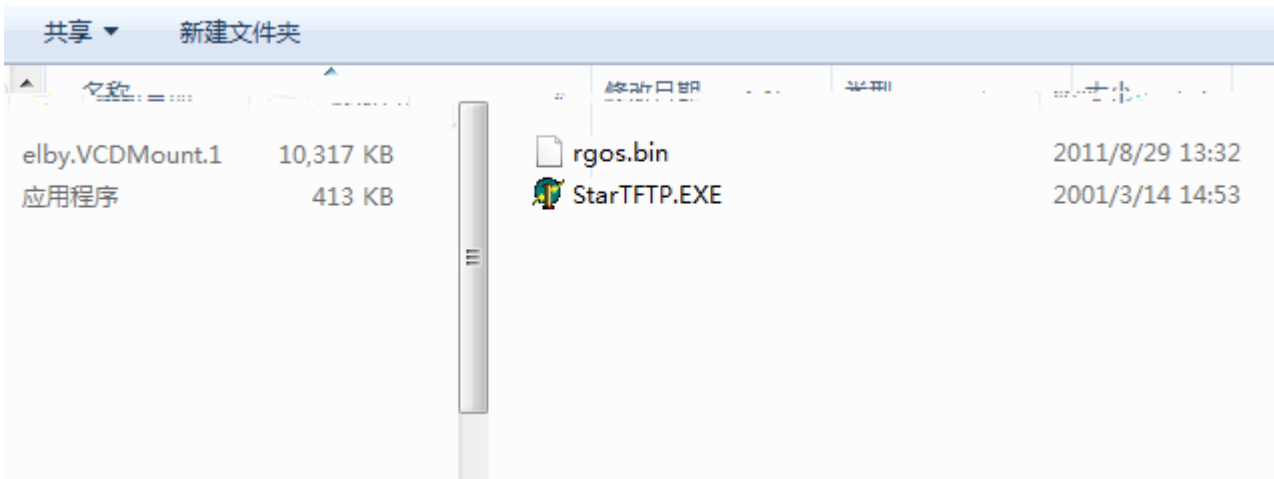


CRTL

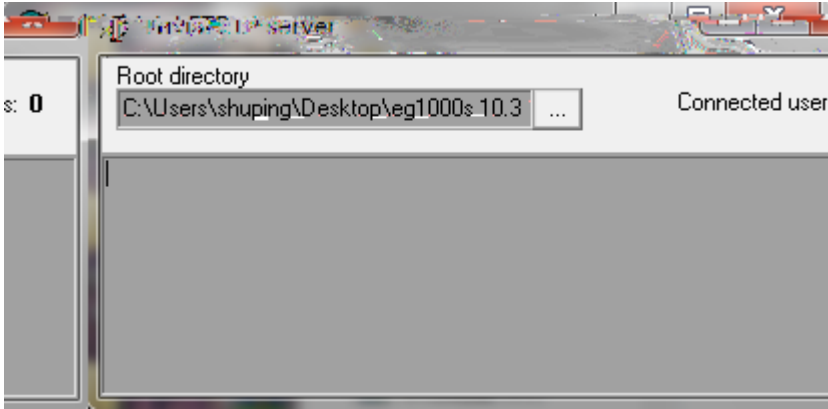
console

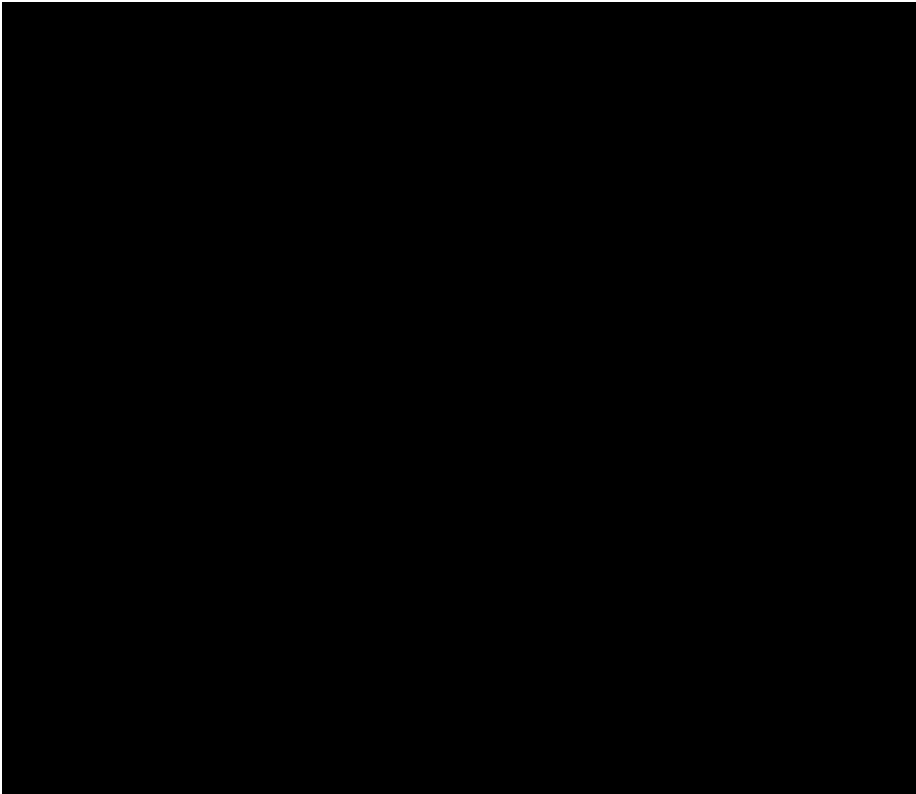


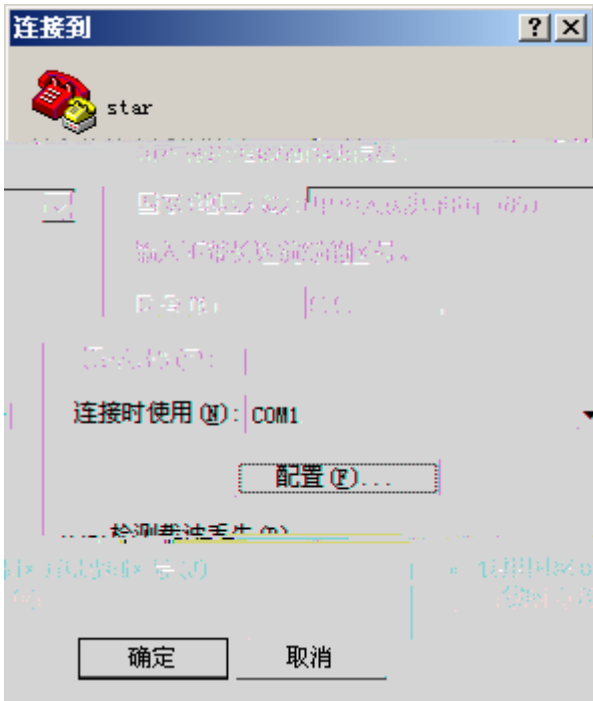
> mgmt



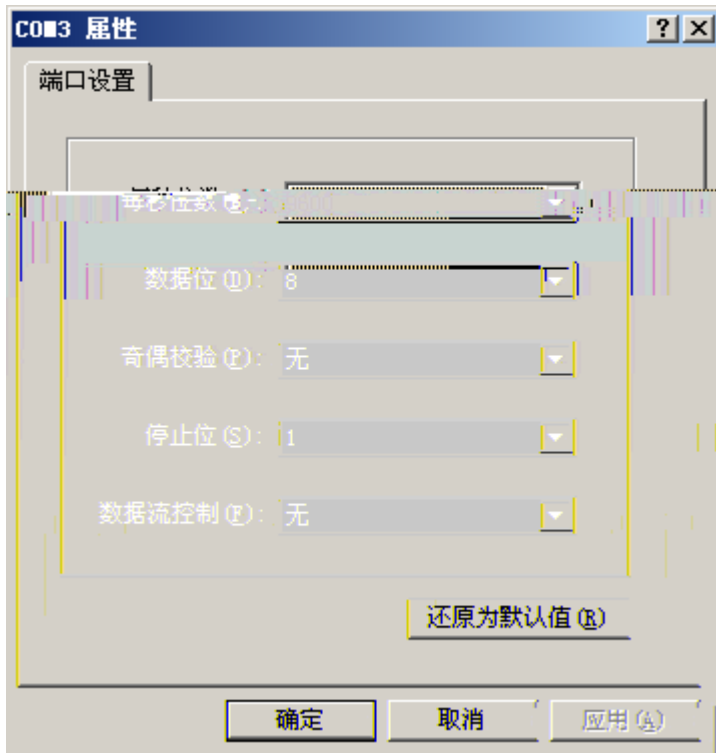
startftp

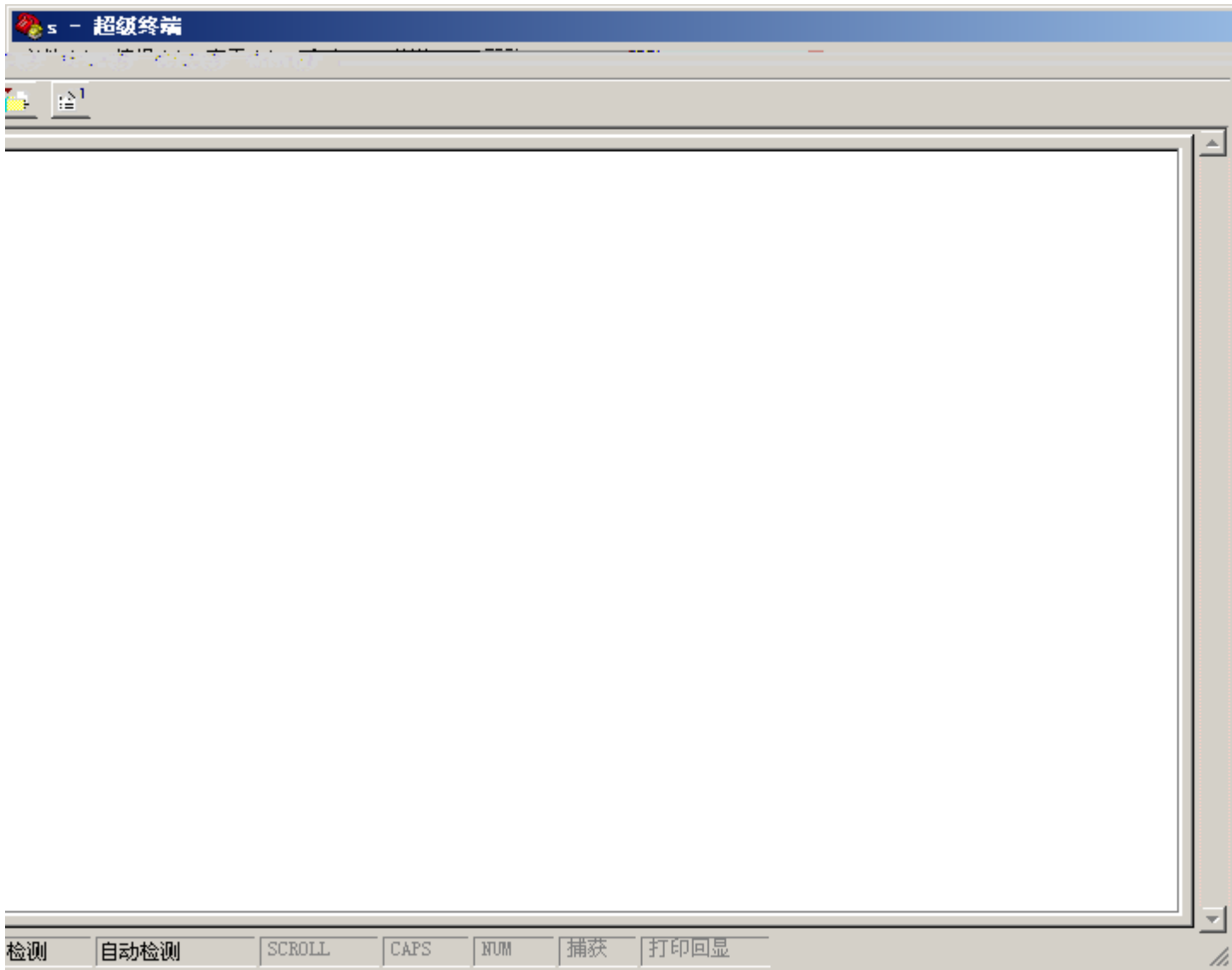






COM

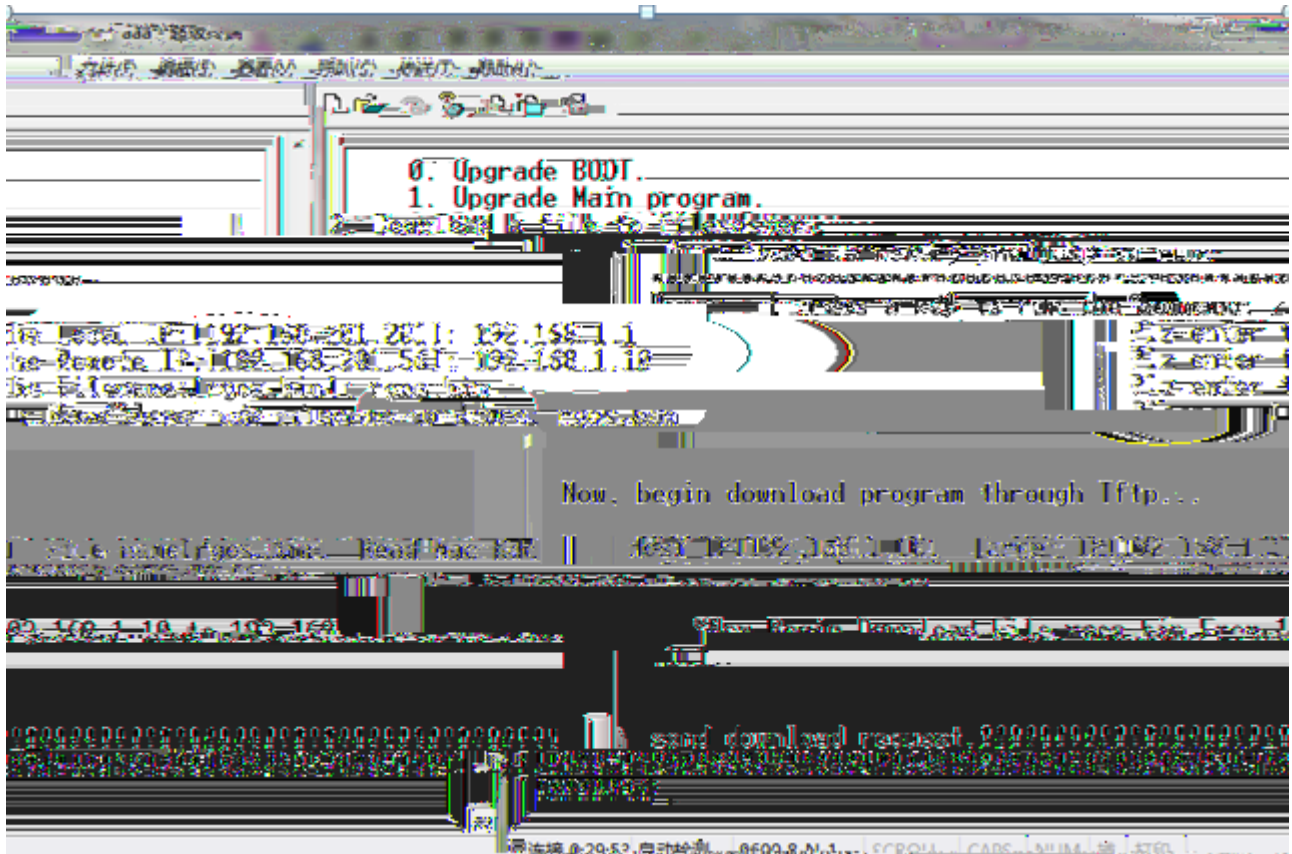




>

<http://ishare.iask.sina.com.cn/f/12091227.html?from=like>

ctrl



3 CTCL+Z

2

