



RG-WG

WebGuard

V1.0

©2017



| | | | | |
|---|-------|---------------|-------|----|
| | RG-WG | WebGuard | | 1 |
| 1 | | | | 7 |
| | 1.1 | RG-WG 1000E-A | | 7 |
| | 1.2 | RG-WG 2000E-A | | 9 |
| | 1.3 | RG-WG 3000E-A | | 10 |
| 2 | | | | 13 |
| | 2.1 | | | 13 |
| | 2.2 | | | 13 |
| | | | | 13 |
| | | | | 13 |
| | | | | 14 |
| | 2.3 | | | 14 |
| | | | | 14 |
| | | | | 14 |
| 3 | | | | 15 |
| | | | | 15 |
| | | | | 15 |
| 4 | | | | 17 |
| | 4.1 | | | |

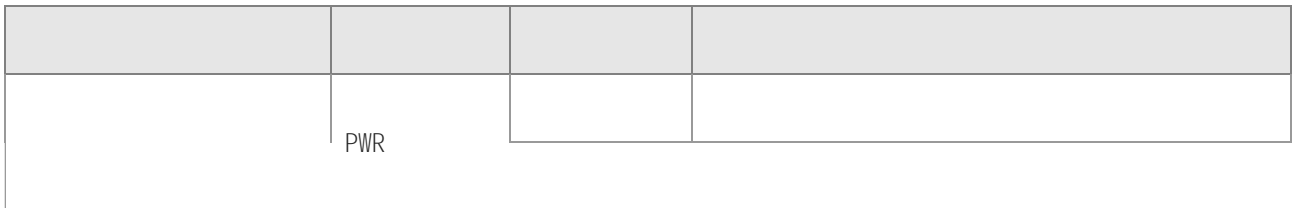
| | | |
|-------|-----------|----|
| 4.3.2 | PC | 19 |
| 4.3.3 | Web | 19 |
| 4.3.5 | | 20 |
| 5 | | 22 |
| 5.1 | | 22 |
| 5.2 | | 22 |
| 6 | | 24 |
| 6.1 | | 24 |

RG-WG 1000E-A

- 1 Console RJ45
- 2 USB
- 3 PWR power HDD BYP bypass
- 4 6 GE3<->GE4 GE5<->GE6 bypass
- 1 4
- RG-SEC-4SFP 4 RG-SEC-8GE 8 RG-SEC-8SFP 8 RG-SEC-4GE4SFP 4
- 4

<5s

>=5s



2 Console RJ45
3 USB
4 BYP1 BYP2 bypass
5 6 eth2<->eth3 bypass eth4<->eth5 bypass
6 1 5
RG-SEC-4SFP 4 RG-SEC-8GE 8 RG-SEC-8SFP 8 RG-SEC-4GE4SFP
4 4 RG-SEC-2XEF 2 SFP+

<5s

RG-SEC-4SFP 4

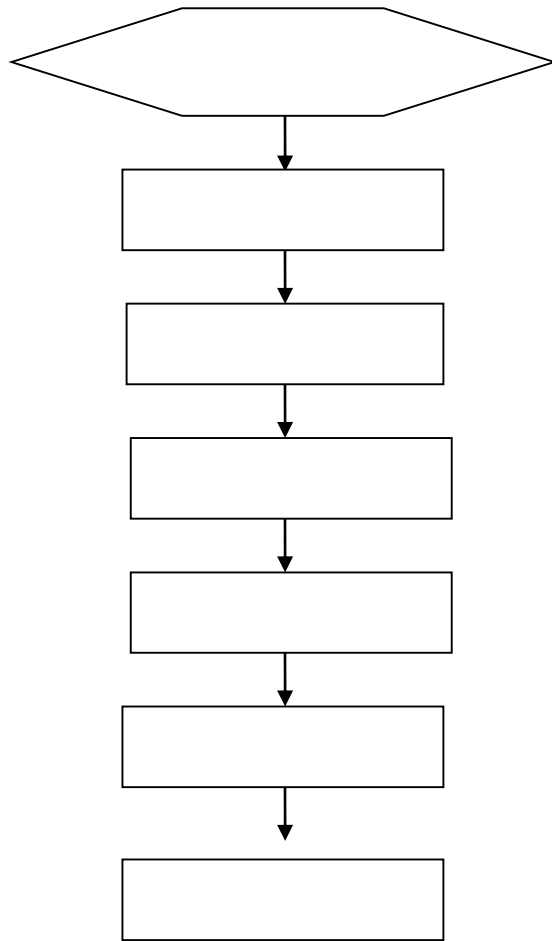
RG-SEC

2

2.1

| | |
|-------|---|
| | |
| RG-WG | 1 |
| | 1 |
| | 2 |
| | 1 |

2.2



4

4.1

RG-WG

RG-WG



4.2

4.3

4.3.2 RG-WG
4.3.3 PC
4.3.5 Web

4.3.1

RG-WG

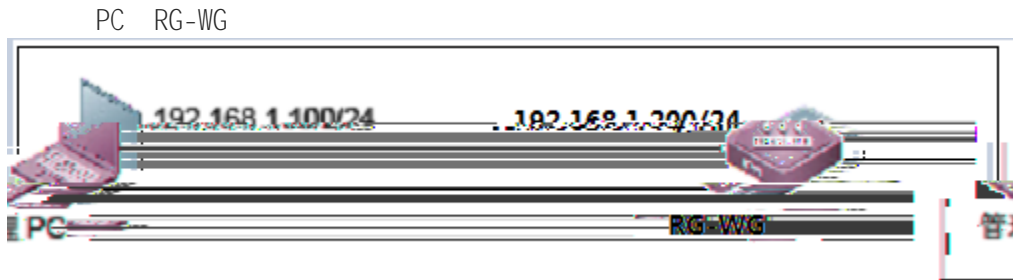
IP

IP

IP

4.3.2

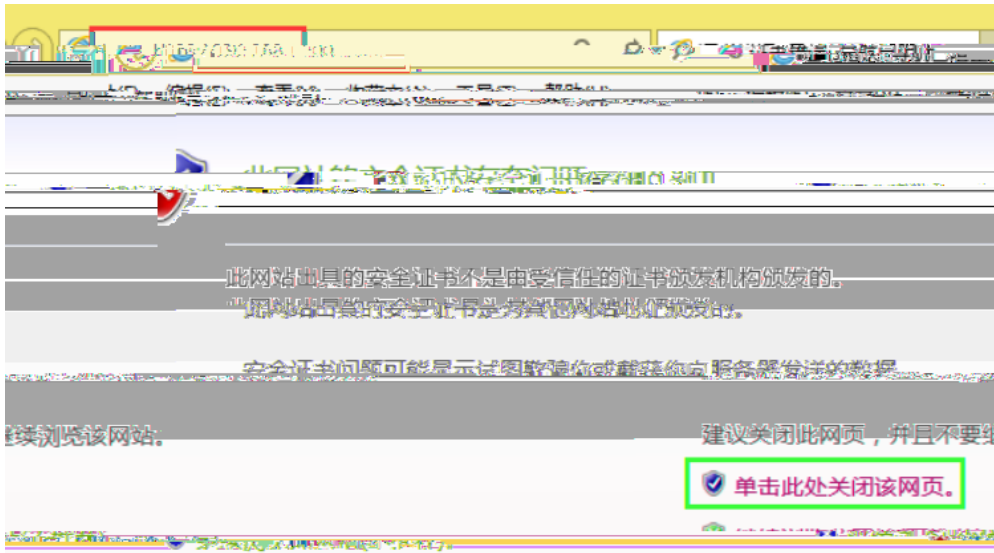
PC



4.3.3 Web

1. RG-WG 3~5

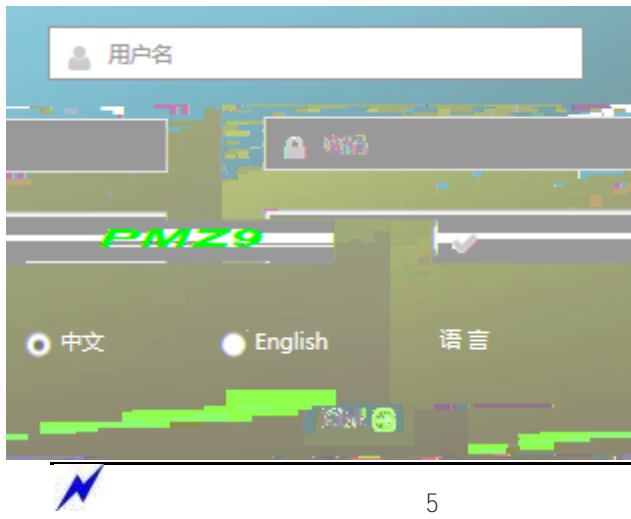
2. IE <https://192.168.1.200>



3.

admin

admin



4.3.5

>>



5

5.1

CPU

CPU

80%

80%

Web

CPU

CPU

CPU

80%

CPU

80%

90%

}

6

6.1

