

***Ruijie***

©2021



**RGOS®**

**RGNOS®**

<http://www.ruijie.com.cn/>

<http://webchat.ruijie.com.cn>

<http://www.ruijie.com.cn/service.aspx>

7× 24

4008-111-000

4008111000@ruijie.com.cn

# 1

RG-WALL 1600-X9500

IPSec    SSL VPN    Web  
IPv4    IPv6    NAC    SSL

RG-WALL 1600-X9500

RG-WALL 1600-X9500

## 1.1 RG-WALL 1600-X9500

 RG-



RG-WALL 1600-X9500

1-2

1-2 RG-WALL 1600-X9500



---

## 2

### 2.1

---

RG-WALL 1600-X9500

---

#### 2.1.1

#### 2.1.2

---

---

#### 2.1.3

---

---

#### 2.1.4

RG-WALL 1600-X9500

RG-WALL 1600-X9500

1~10

" 3.8

### 2.1.5

RG-WALL 1600-X9500

## 2.2

RG-WALL 1600-X9500

### 2.2.1

RG-WALL 1600-X9500

RG-WALL 1600-X9500

RG-WALL 1600-X9500

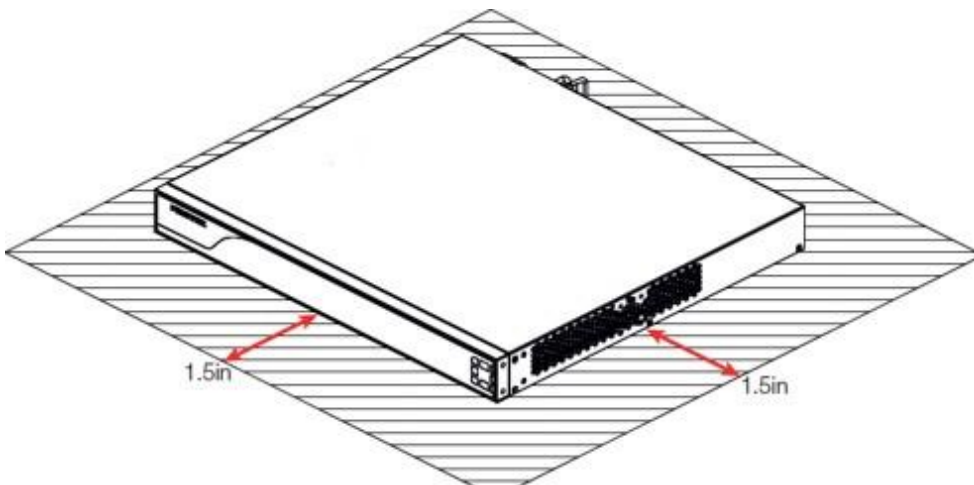
### 2.2.2

RG-WALL 1600-X9500

2-2 2-3

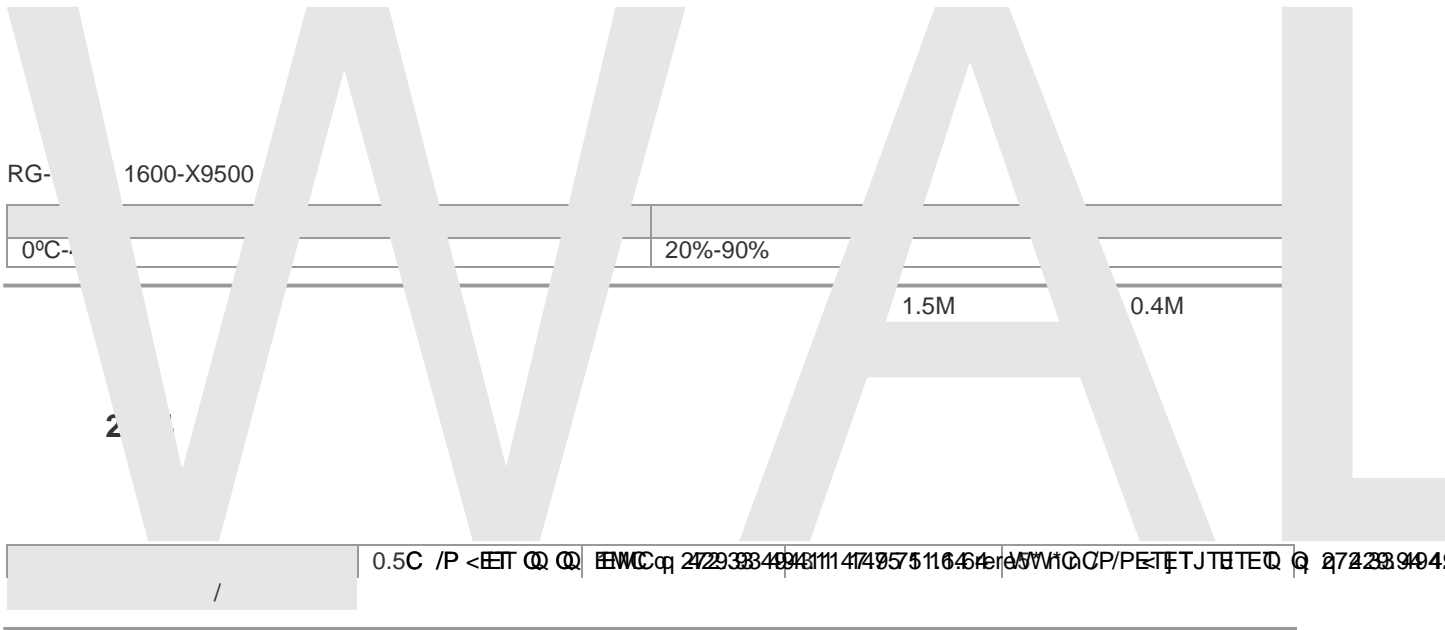
3.8cm

2-1 RG-WALL 1600-X9500



2.2.3

RG-WALL 1600-X9500 T /10 BT 1 0 0 1 120.26 642.40 TJ463 0.T /10 BT 1 0 0 1 123.26 642.34 Tm [(X)14(9)-30.4M165 50



## 2.2.7 EMI

## 2.3

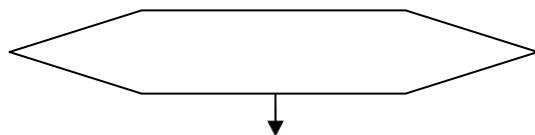
## 2.4

---

	# "

---

--	--



### 3.3

5mm

1.5cm

- 1)
- 2)
- 3)
- 4)

IEC60297 19  
1RU=44.45mm(1.75inch) 1RU 3-1

RU Rack Unit

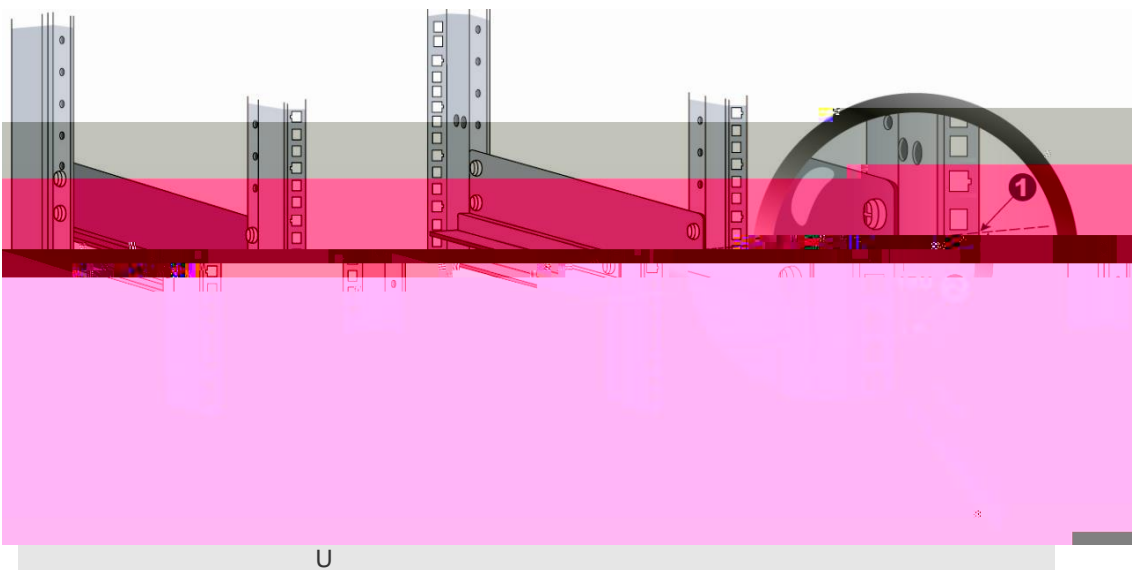
RG- WALL

1600-X9500

RU

U

3-1



RG-WALL 1600-X9500

RG-WALL 1600-X9500

### 3.4

RG-WALL 1600-X9500

10mm

- 1) RG-WALL 1600-X9500
- 2) RG-WALL 1600-X9500
- 3) RG-WALL 1600-X9500 RG-WALL 1600-X9500

### 3.5

16A

- 1)
- 2)

- 1) RJ45
- 2) RJ45
- 3) RJ45
- 4)

### 3.7

- 1)
- 2)
- 3)

### 3.8

### 3.9

#### SFP

---

SFP

---

SFP

4)

5)

SFP

6) 3-7

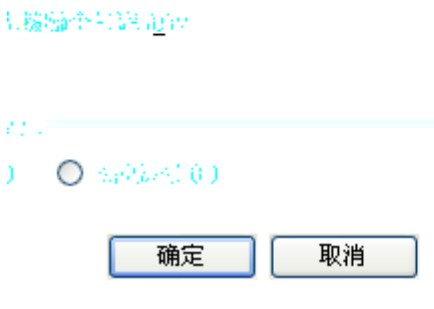
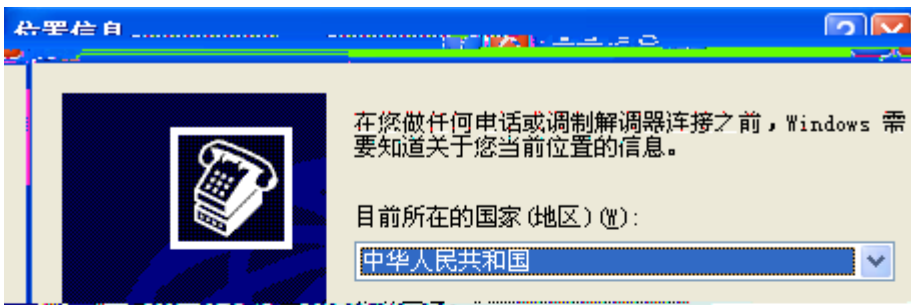
- 1.
- 2. SFP
- 3.
- 4. SFP

# 4

## 4.1

PC	Console				
1)	DB-9			PC	
2)	RJ45		Console		
	PC	PC	Windows3.1	Terminal	Windows 95/98/NT/2000/XP
			9600	8	1
1)	-	-	-	-	4-2

4-1



2)

4-2



4-3

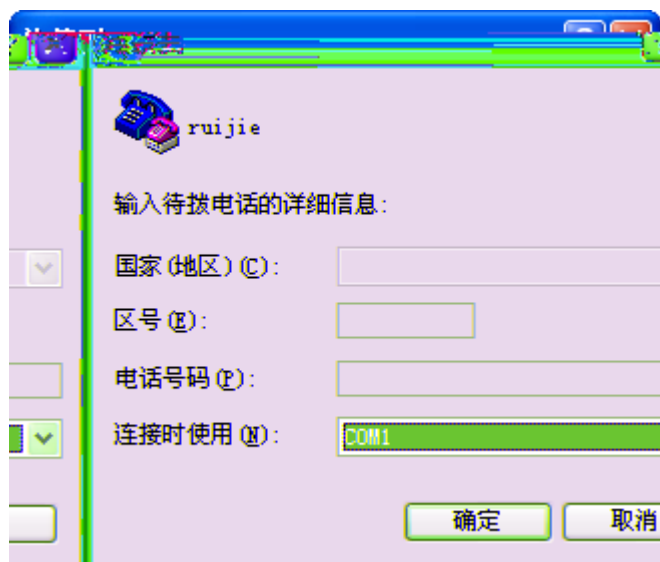


3)

< >

4-4

4-3



4)

8

< >

1

4-5

9600

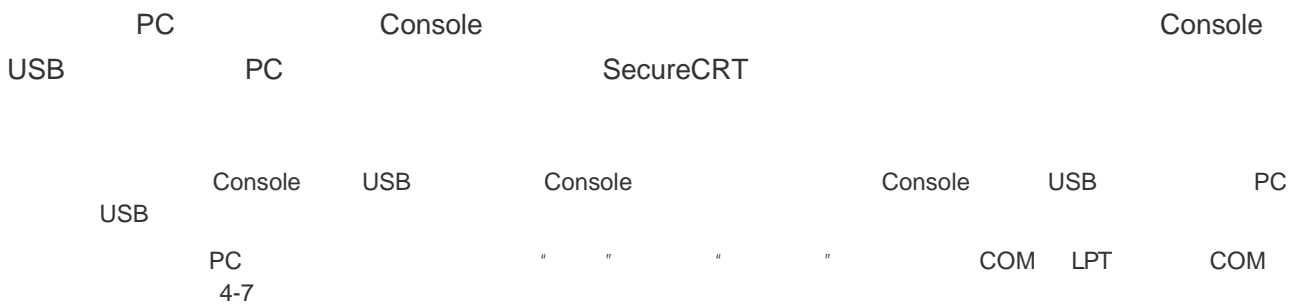
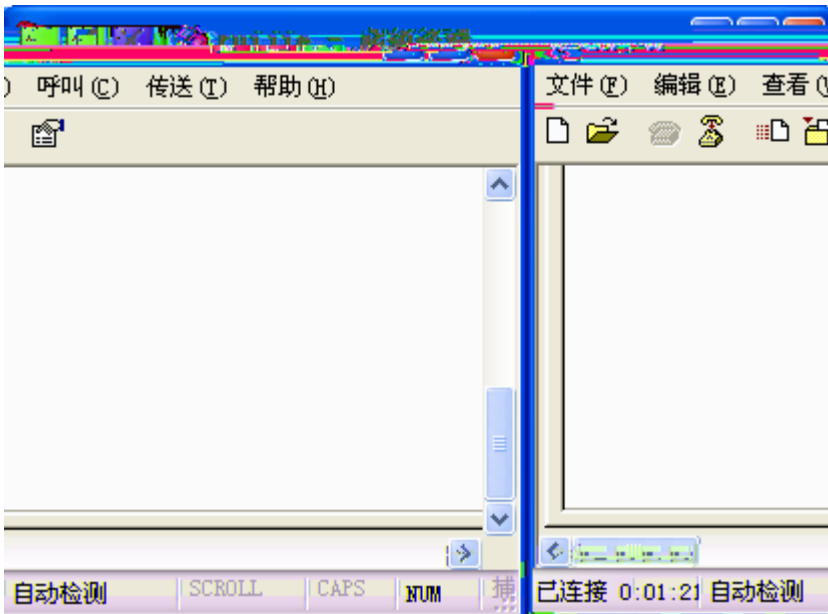
4-4

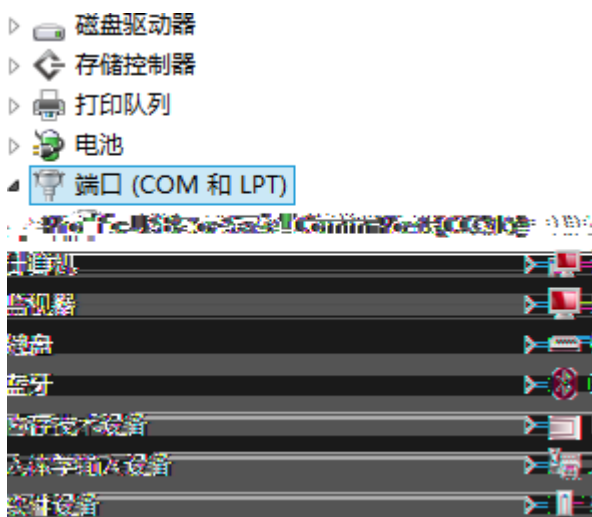


5)

< >

4-6





9600

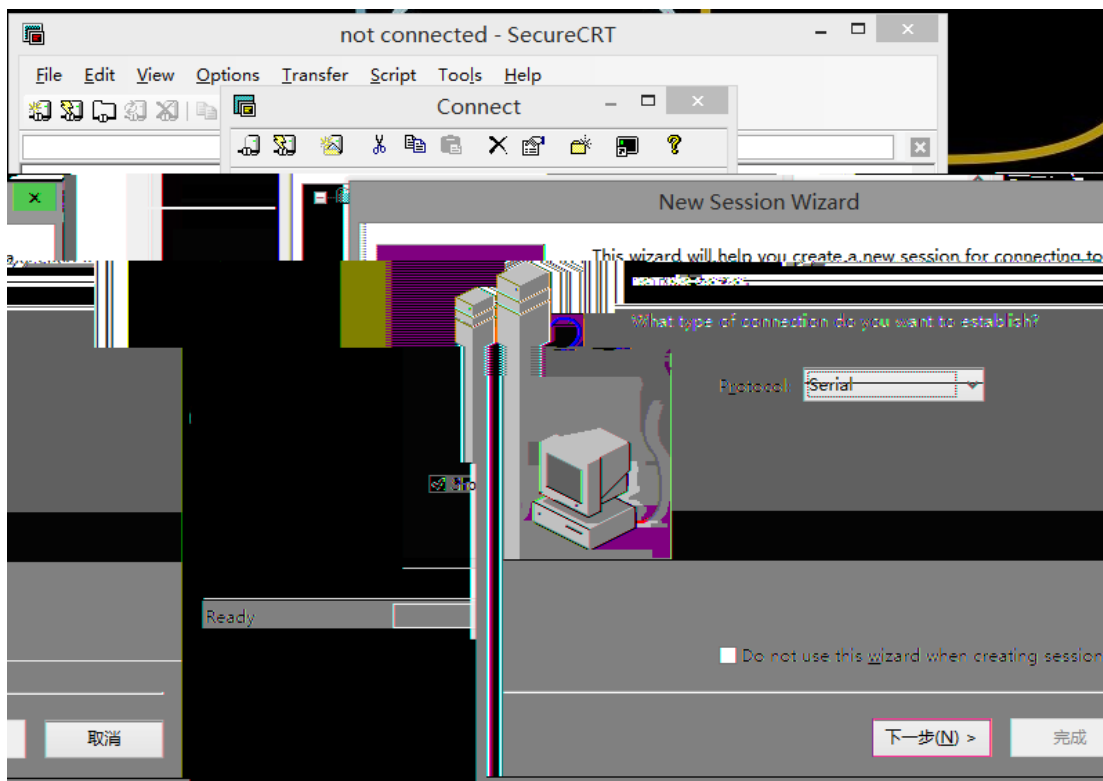
8

1

1) i - Connect Connect

- sess

4-8



4-8

2)

4-9

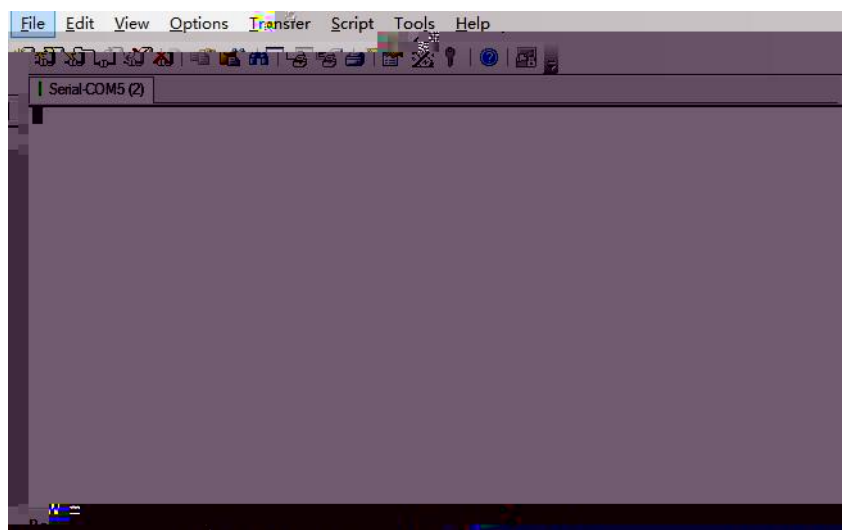
4-9

4-10

4)

< >

4-11



4-11

## 4.2

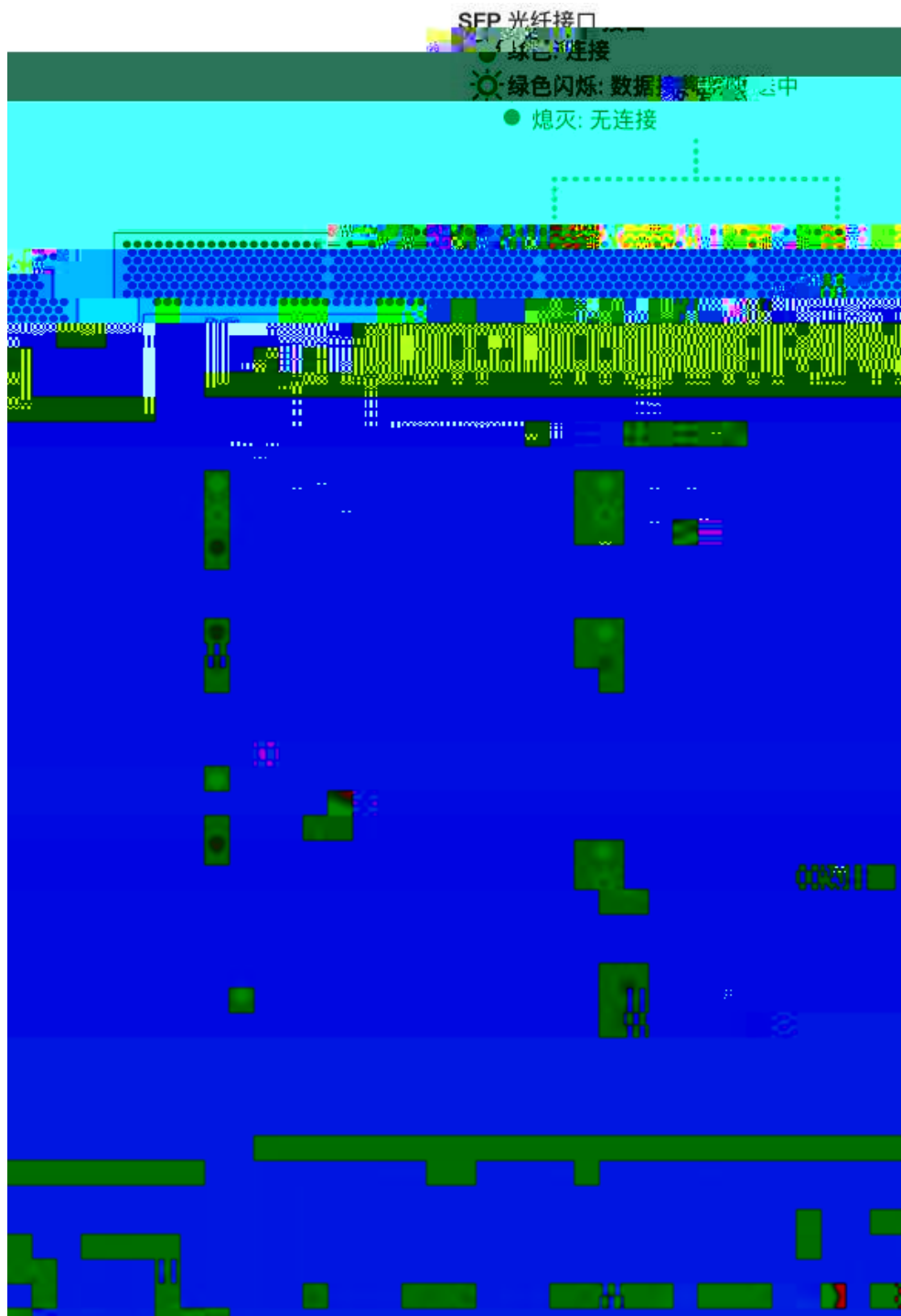
PC

# 5

## 5.1

RG-WALL 1600-X9500

5-1 RG-WALL 1600-X9500



---

RG-WALL 1600-X9500

RG-WALL 1600-X9500

RG-WALL 1600-X9500

Internet

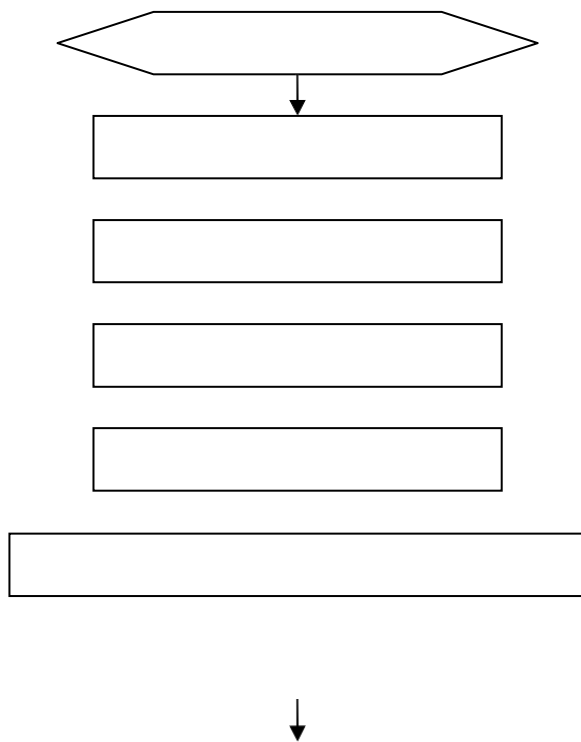
Telnet

RG-WALL 1600-X9500

RG-WALL 1600-X9500

---

## 5.2



4

Ⓜ Ⓜ

5

# A

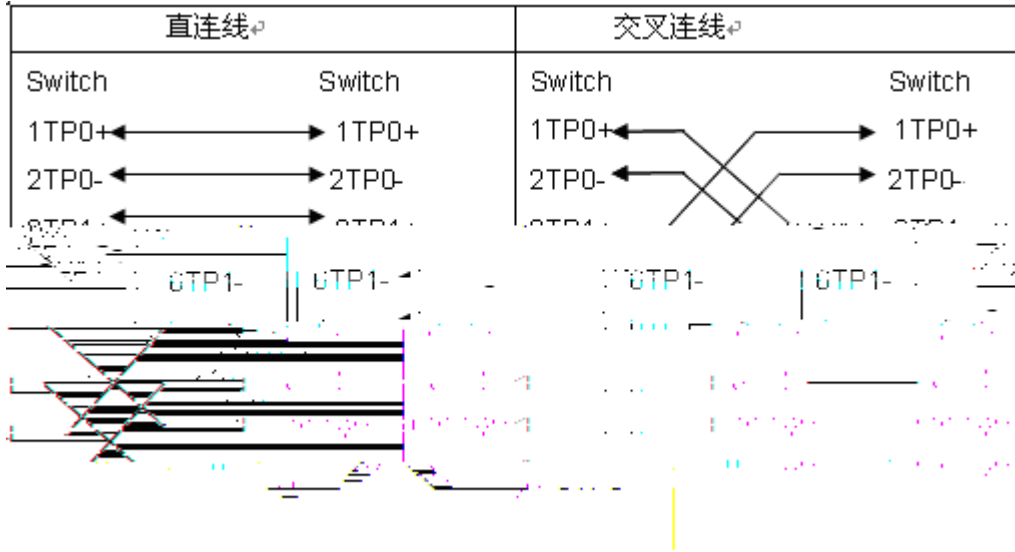
## 1000BASE-T/100BASE-TX/10BASE-T

1000BASE-T/100BASE-TX/10BASE-T

MDI/MDIX Crossover

1000BASE-T IEEE 802.3ab 100 1000BASE-T 4 100-ohm 5 5 4 UTP STP 1000BASE-T

A-1 1000BASE-T



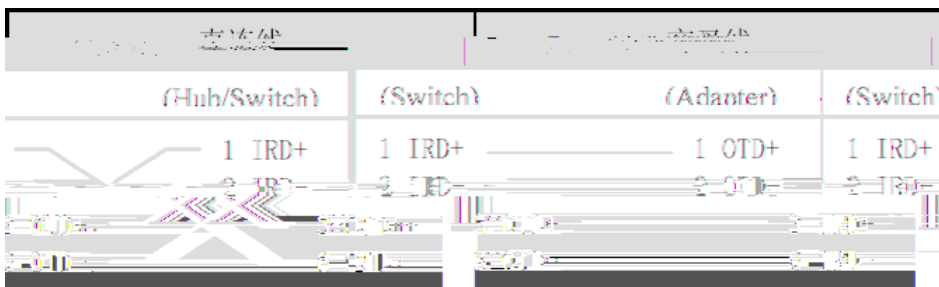
100BASE-TX/10BASE-T 100-ohm 5 100 10Mbps 100-ohm 3,4,5 100BASE-TX/10BASE-T 100Mbps

A-2 100BASE-TX/10BASE-T

Pin	插座	插头
1	Input Receive Data+	Output Transmit Data+
2	Input Receive Data-	Output Transmit Data-
3	Control/Receive Data+	Control/Receive Data+
4	Control/Receive Data-	Control/Receive Data-
5	Control/Transmit Data+	Control/Transmit Data+
6	Control/Transmit Data-	Control/Transmit Data-
7	Reserved	Reserved
8	Reserved	Reserved

100BASE-TX/10BASE-T

A-3 100BASE-TX/10BASE-T



A 4



# B

RG-WALL 1600-X9500

19

7

5

7

10

SFP+

5

10

25

20

10

D-1

D-1

D-3

íPD-3

( (

(

