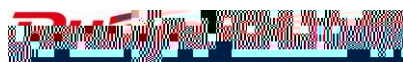




©2013



RGOS®

RGNOS®

<http://www.ruijie.com.cn/>  
<http://webchat.ruijie.com.cn>  
<http://www.ruijie.com.cn/service.aspx>  
4008-111-000  
<http://support.ruijie.com.cn>  
[service@ruijie.com.cn](mailto:service@ruijie.com.cn)

7× 24



RG-WALL 1600-M5

RG-WALL 1600-M5

RG-WALL 1600-M5

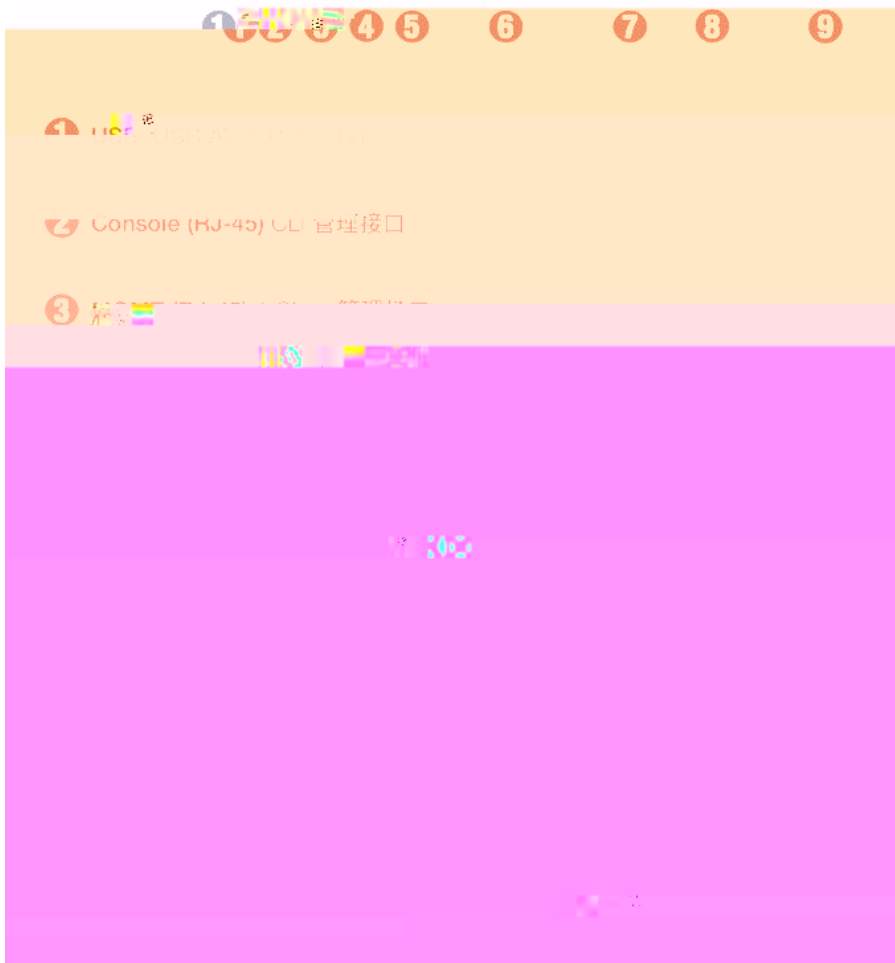
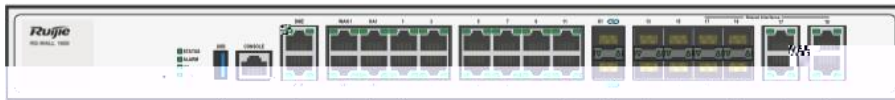
## 1.1 RG-WAI

	254 x 432 x 44 L * W * H mm 1RU
	100-240 VAC, 50-60 Hz
	110 V / 3 A, 220 V / 1.5 A
/	35.1W/38.7 W
	119.77 BTU/h

RG-WALL 1600-M5800E

1-2

1-2 RG-WALL 1600-M5800E



## 2

RG-WALL 1600-M5800E

### 2.1

2.1.1

2.1.2

---

2.1.3

---



### 2.2.3



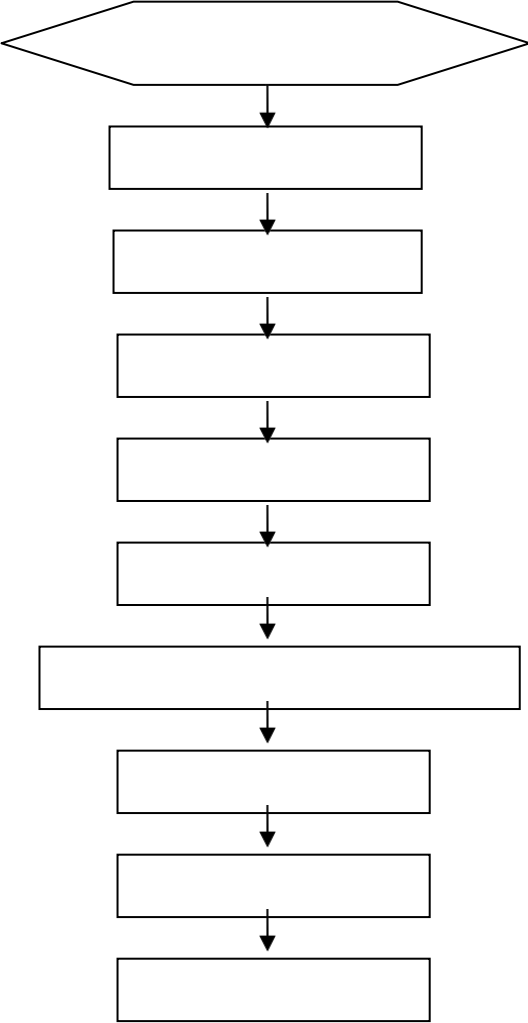
## 2.2.7 EMI



3

RG-WALL 1600-M5800E

3.1



3.2

RG-WALL 1600-M5800E

3.3

5mm

1.5cm

- 1)
- 2)
- 3)
- 4)

1RU=44.45mm(1.75inch) IEC60297 19 1RU 3-1

RU Rack Unit

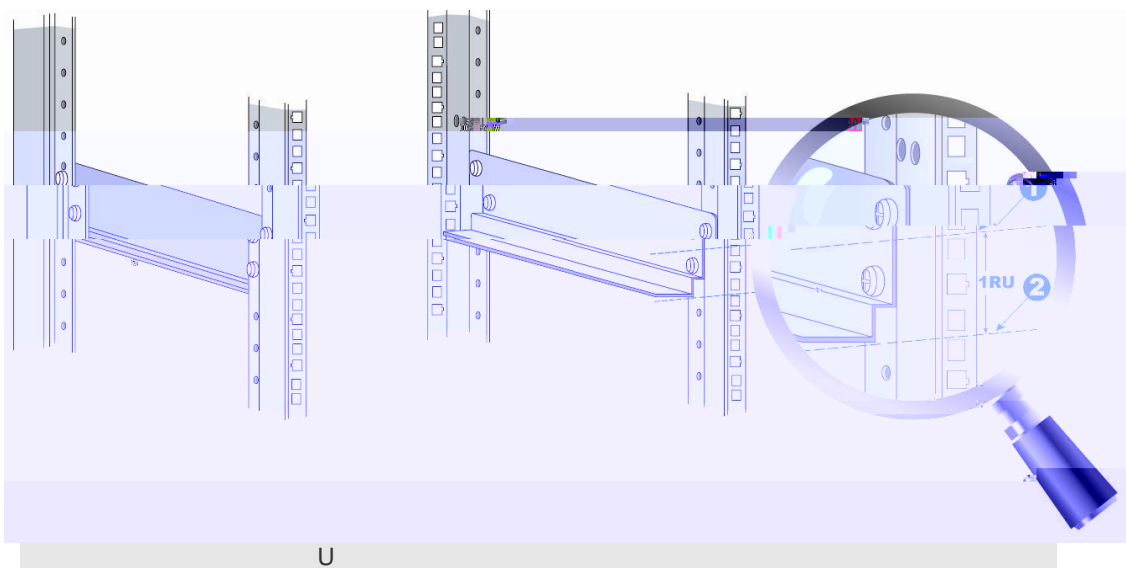
WALL1600-M5800E

RU

U

RG-

3-1



U

RG-WALL 1600-M5800E  
M5800E

RG-WALL1600-

---

### 3.4

RG-WALL 1600-M5800E

10mm

- 1) RG-WALL 1600-M5800E
- 2) RG-WALL 1600-M5800E
- 3) RG-WALL 1600-M5800E RG-WALL 1600-M5800E

### 3.5

- 1)
- 2)
- 3) 16A
- 4)
- 5)

- 1)
- 2)

---

3

1.5

14AWG

---

### 3.6

- 1)
- 2)

- 1) RJ45
- 2) RJ45
- 3) RJ45
- 4)

### 3.7

- 1)
- 2)
- 3)

- 1)
- 2)
- 3)

### 3.8

- 1)
- 2)
- 3)
- 4)

- 1)
- 2)

- 1)
- 2)
- 3)

### 3.9

#### SFP

---

#### SFP

---

#### SFP

- 1)
- 2) SFP

3) 3-7

1.

2. SFP

3.

SFP

4.



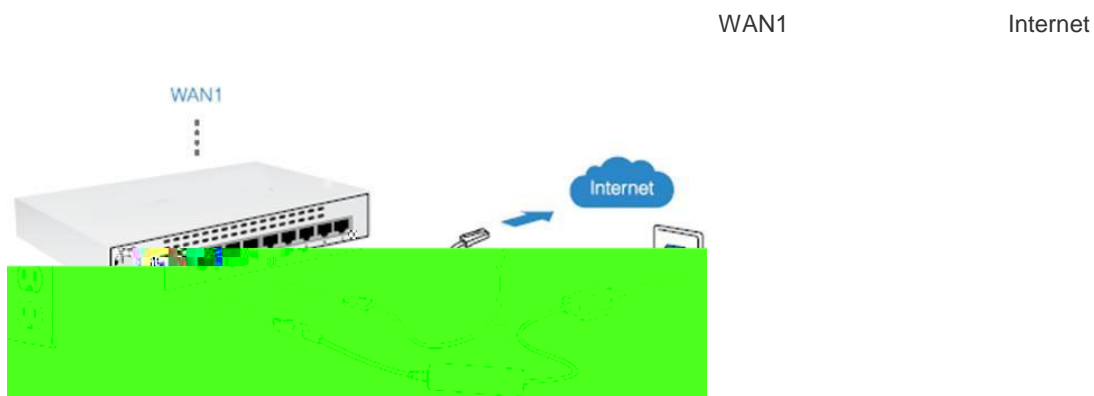
3-

4

4.1

Console

4-1



4-1

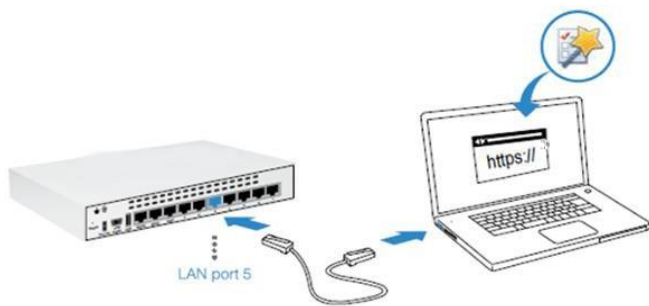
Web

admin

LAN

PC

IP : <https://192.168.1.99>



4-2

Console

PC

Console

a)

DB-9

PC

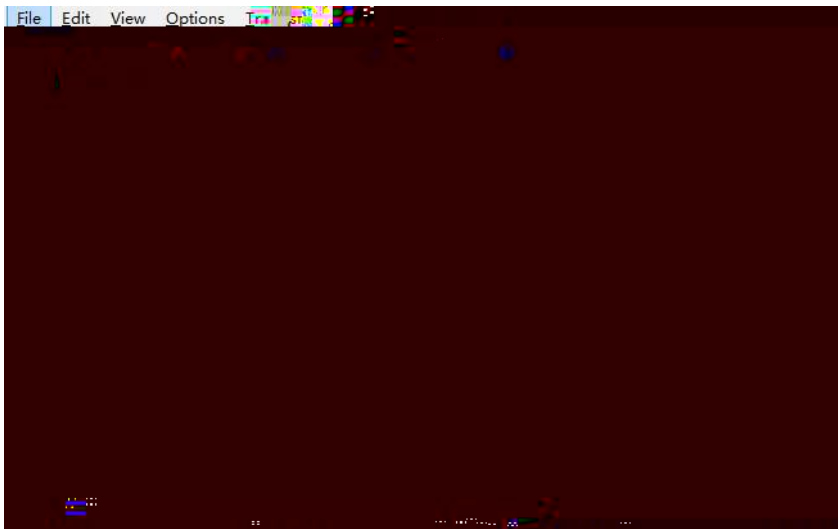
b)	RJ45			Console			
	1)	Console	USB	Console		Console	USB
	USB	PC					
	2)	PC		"			



d)

< >

4-7



4-7

## 4.2

1)

2)

3)

4)

PC

1)

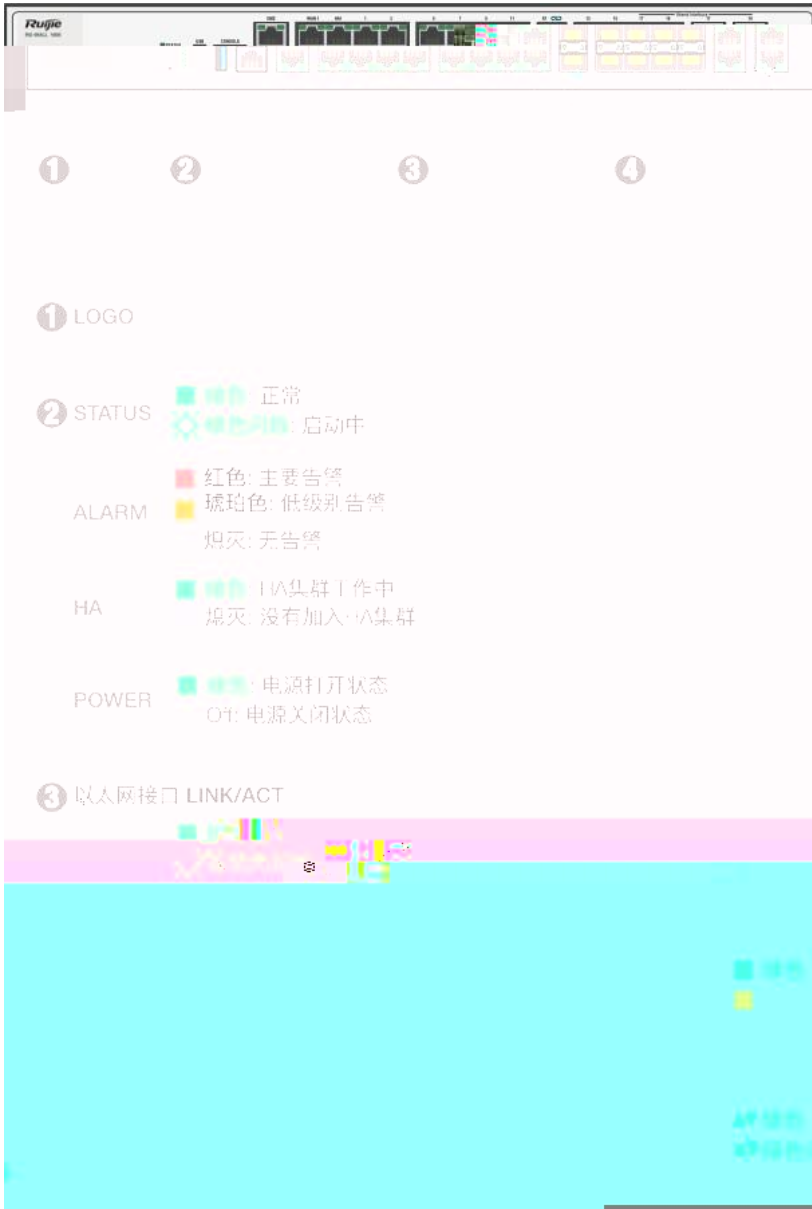
2)

# 5

## 5.1

### RG-WALL 1600-M5800E

#### 5-1 RG-WALL 1600-M5800E



### RG-WALL 1600-M5800E

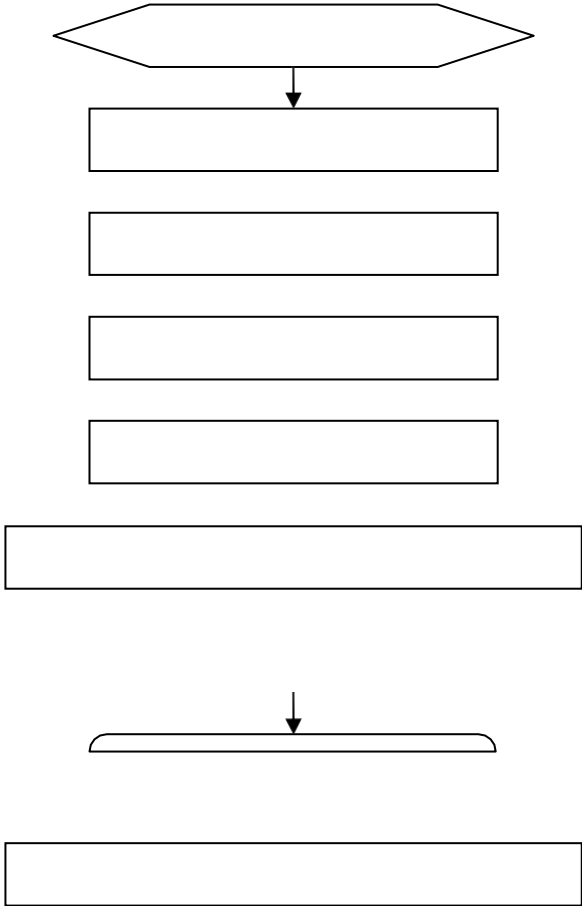
RG-WALL 1600-M5800E  
RG-WALL 1600-M5800E

RG-WALL 1600-M5800E

Internet  
RG-WALL 1600-M5800E

Telnet

## 5.2



4

5      **link**

link

1

2

1310nm

1550nm

3

4

# A

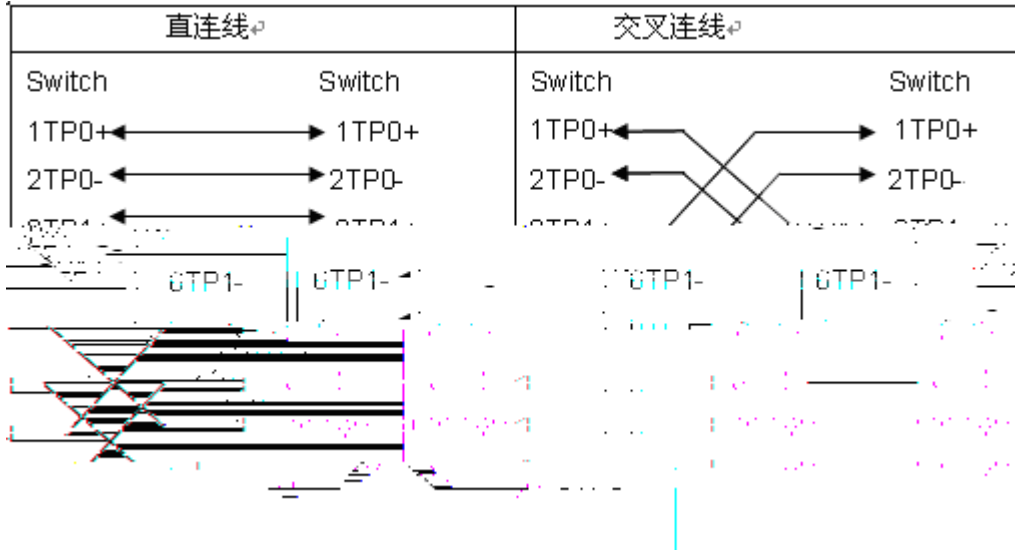
## 1000BASE-T/100BASE-TX/10BASE-T

1000BASE-T/100BASE-TX/10BASE-T

MDI/MDIX Crossover

1000BASE-T IEEE 802.3ab 100 1000BASE-T 4 100-ohm 5 5 4 UTP STP 1000BASE-T

A-1 1000BASE-T



100BASE-TX/10BASE-T  
100-ohm 5 100

10Mbps 100-ohm 3,4,5  
100BASE-TX/10BASE-T

100Mbps

A-2 100BASE-TX/10BASE-T

Pin	插座	插头
1	Input Receive Data+	Output Transmit Data+
2	Input Receive Data-	Output Transmit Data-
3	Control/Receive Data+	Control/Transmit Data+
4	Control/Receive Data-	Control/Transmit Data-
5	4,5,7,8	Not Used
6		Not Used
7		Not Used
8		Not Used

100BASE-TX/10BASE-T

A-3 100BASE-TX/10BASE-T







16)

D-3

D-3

17)

18) 220V      -48V

19)

- 21)
- 22)
- 23)
- 24)

mm	mm
10	80~150
10~30	150~200