



RG-WALL 1600-X8600

V1.2

©2014

7× 24

<http://www.ruijie.com.cn/>
<http://webchat.ruijie.com.cn>
<http://www.ruijie.com.cn/service.aspx>
4008-111-000
<http://support.ruijie.com.cn>
service@ruijie.com.cn

1

| | | | |
|--------------------|--------------------|------|--------|
| RG-WALL 1600-X8600 | | | 20Gbps |
| 8 SFP RJ 45 | | | |
| | RG-WALL 1600-X8600 | 128G | WAN |

RG-WALL 1600-X8600

1.1 RG-WALL 1600-X8600

| | |
|--|--------------------|
| | RG-WALL 1600-X8600 |
| | |

LL 1600-X8600

LL 1600-X8600

1-2

1~7

RG-WALL 1600-X8600

| # | | | | |
|---|----------|-------|-----|---------------|
| 1 | USB | USB-A | USB | USB Key Modem |
| 2 | USB MGMT | | | |

2

2.1

RG-WALL 1600-X8600

2.1.1

2.1.2

2.1.3

2.1.4

RG-WALL 1600-X8600

RG-WALL 1600-X8600

1~10

3.8

2.1.5

RG-

2.2.7 EMI

2.3

2.4

| | |
|--|--|
| | |
| | |
| | |
| | |

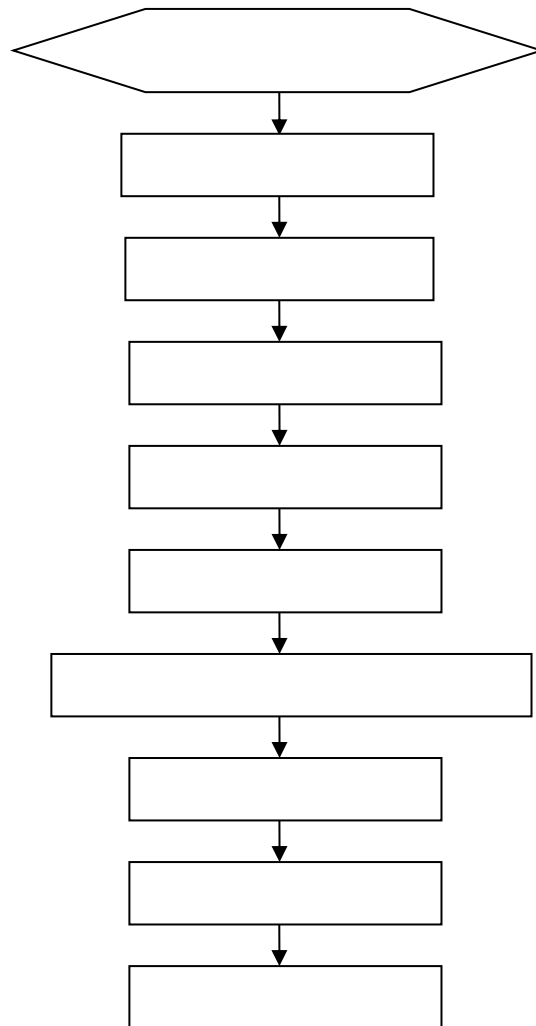
RG-WALL 1600-X8600

2.5

| | | | | | |
|--|---|-----|---------|----|---|
| | 2 | USB | Console | 12 | 4 |
|--|---|-----|---------|----|---|

3

3.1



3.2

3.3

- 10) ÜR Í ÜR Í
- 11) ÜR Í Ê
- 12) ÜR Í
- 13)

3.7

- 14)
- 15)
- 16)

3.8

3.9

XFP/SFP+/SFP

SFP+/SFP

- 17)
- 18) ÛÛÉÛÛ

26)

27)

SFP+/SFP

SFP+

28)

29)

ÙøúÉ

ÙøúÉ

ÙøúÉ

SFP+

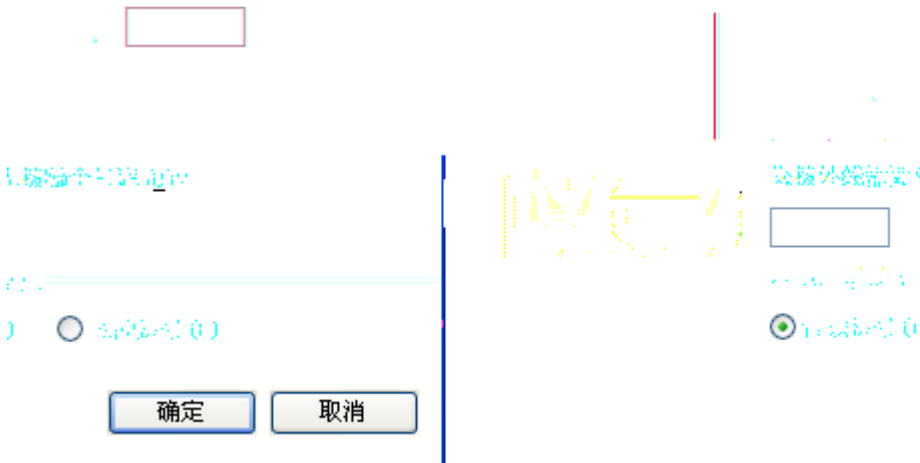
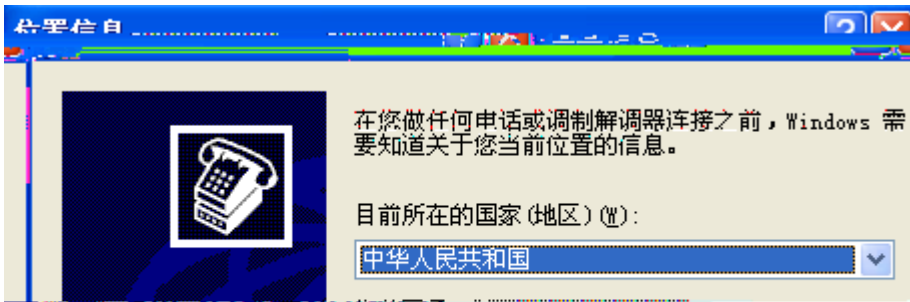
8

4

4.1

| PC | Console | PC | PC | Windows3.1 | Terminal | Windows 95/98/NT/2000/XP |
|-----|--------------------------|----|----|------------|----------|--------------------------|
| 30) | ÖÓË | | | 9600 | 8 | 1 |
| 31) | ÛR Í | | | | | |
| 32) | %o +þ%o +þ%o +þ%o +þ%o + | | | | | I ËG |

4-1



33) %o +þ

4-2

36)

Ł N

I Ę

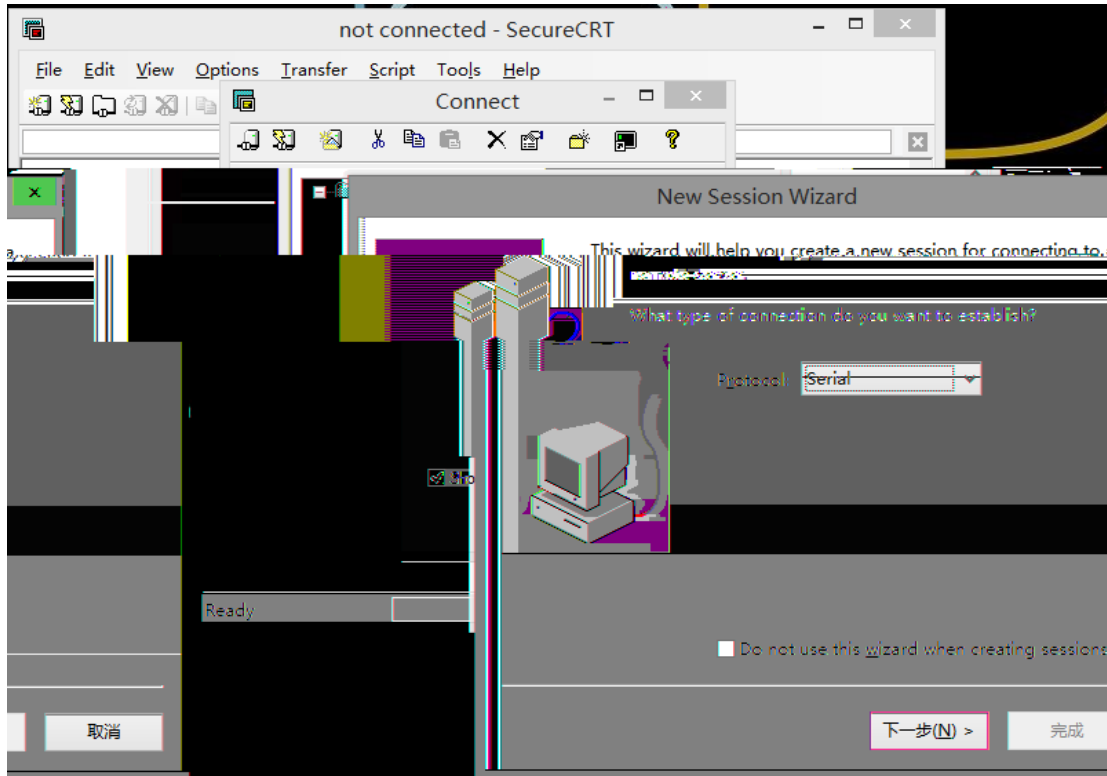
ÚÔ
Ë

Ô[]•[]

Ô[]•[]



37) 取消 下一步(N) > 完成



Á Ę

38) %o +Ä I ĘJ

Á

4-9

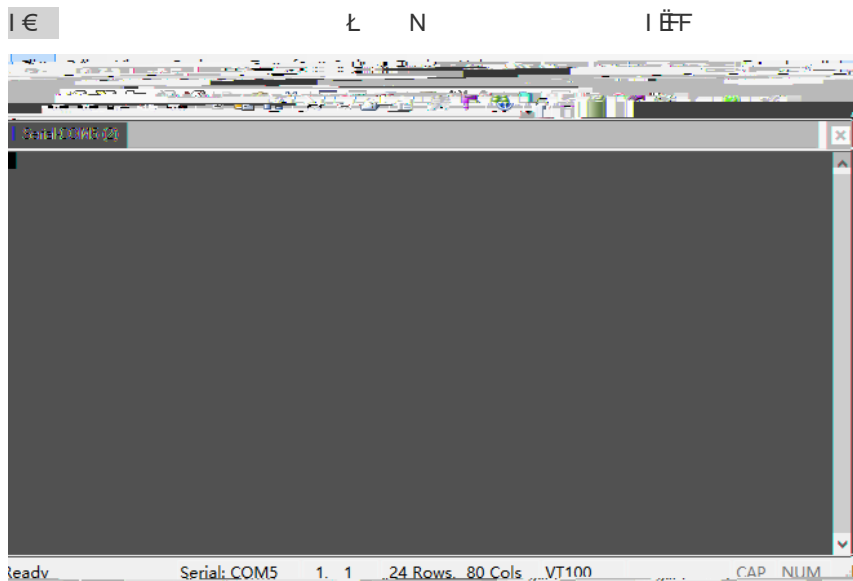
HJ Á
I €

" "

" "

Ł N

4-10



4-11

4.2

PC

5

5.1

RG-WALL 1600-X8600

5-1 RG-WALL 1600-X8600

| # | LED | | |
|---|--------|--|------|
| 1 | Logo | | |
| 2 | STATUS | | |
| 3 | ALARM | | |
| 4 | POWER | | |
| 5 | HA | | HA |
| | | | HA |
| | | | HA |
| 6 | | | / |
| 6 | | | 1Gbp |

RG-WALL 1600-X8600

RG-WALL 1600-X8600 Internet

Telnet

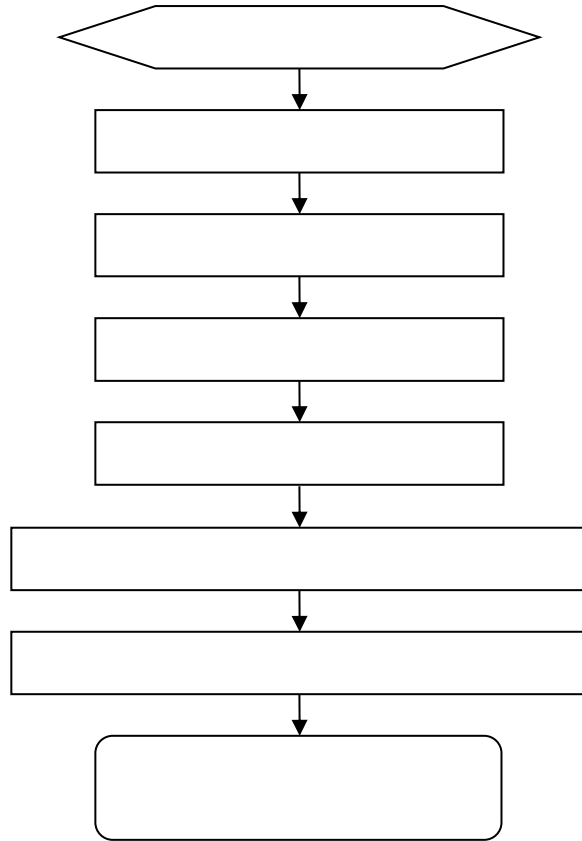
RG-WALL 1600-X8600

RG-WALL 1600-X8600

5.2

6

6.1



6.2

Status

Power

link

1

2

1310nm

1550nm

3

4

A

1000BASE-T/100BASE-TX/10BASE-T

MDI/MDIX Crossover

| | | | | | | | |
|------------|--------------|------------|---------|---|---|-----|-----------|
| 1000BASE-T | IEEE 802.3ab | | 100-ohm | 5 | 5 | UTP | STP |
| | 100 | 1000BASE-T | 4 | | | 4 | 1000BASE- |
| T | | | | | | | |
| A-1 | 1000BASE-T | | | | | | |

100BASE-TX/10BASE-T

A 4



B

RG-WALL 1600-X8600

19

7

5

7

10

SFP+

5

10

25

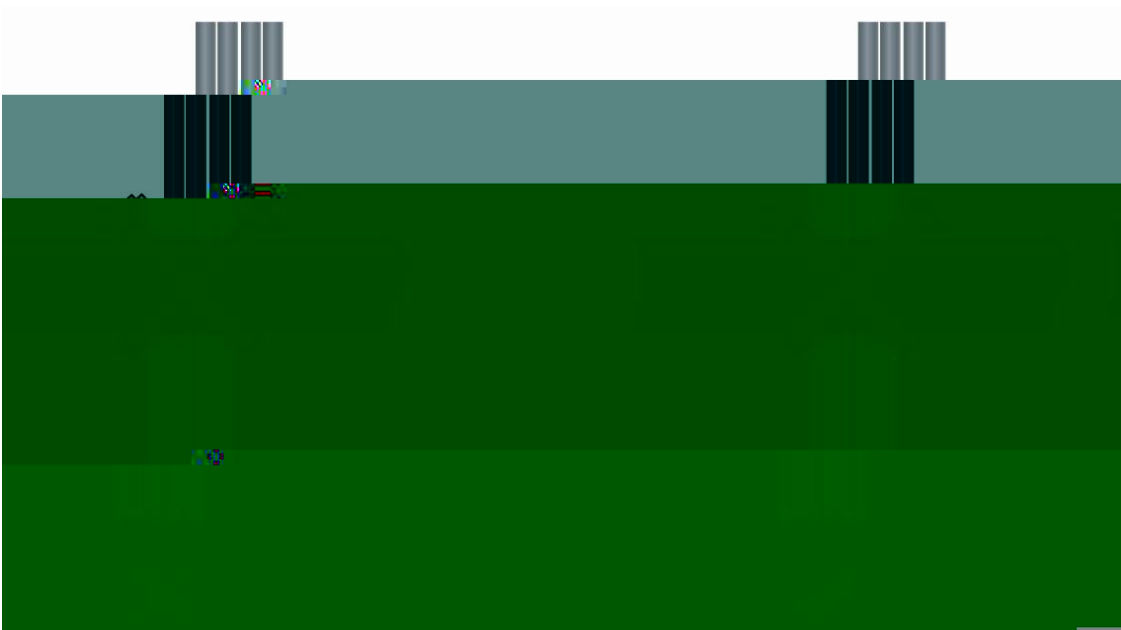
20

10

D-1

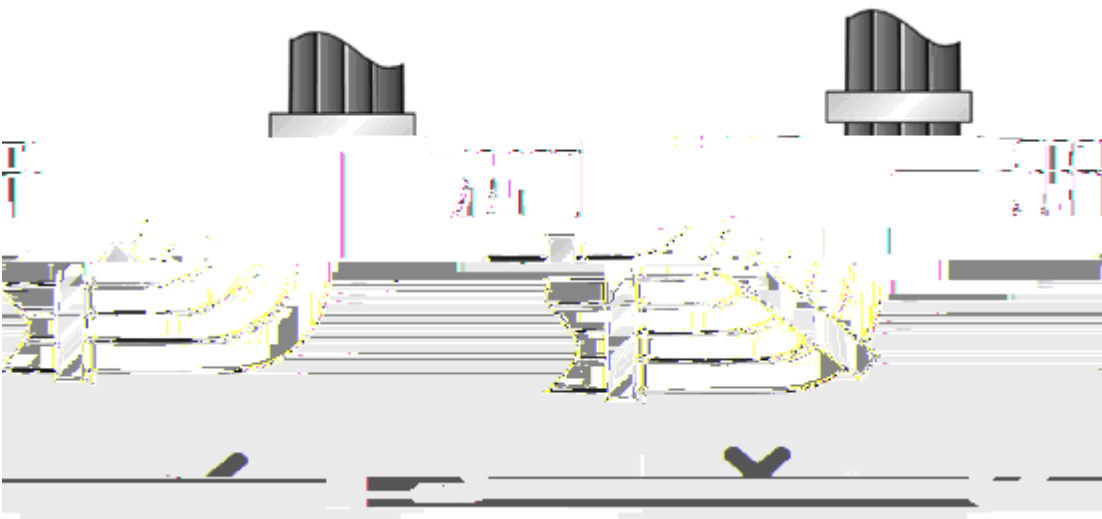
D-1

30mm



D-3

D-3

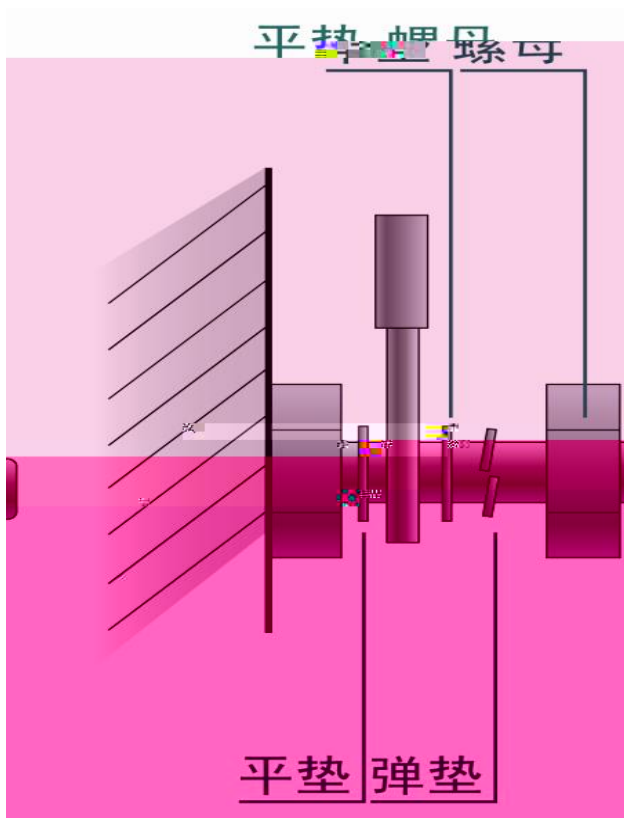


220V

-48V

D-4

D-4



| mm | mm |
|-------|---------|
| 10 | 80~150 |
| 10~30 | 150~200 |
| 30 | 200~300 |