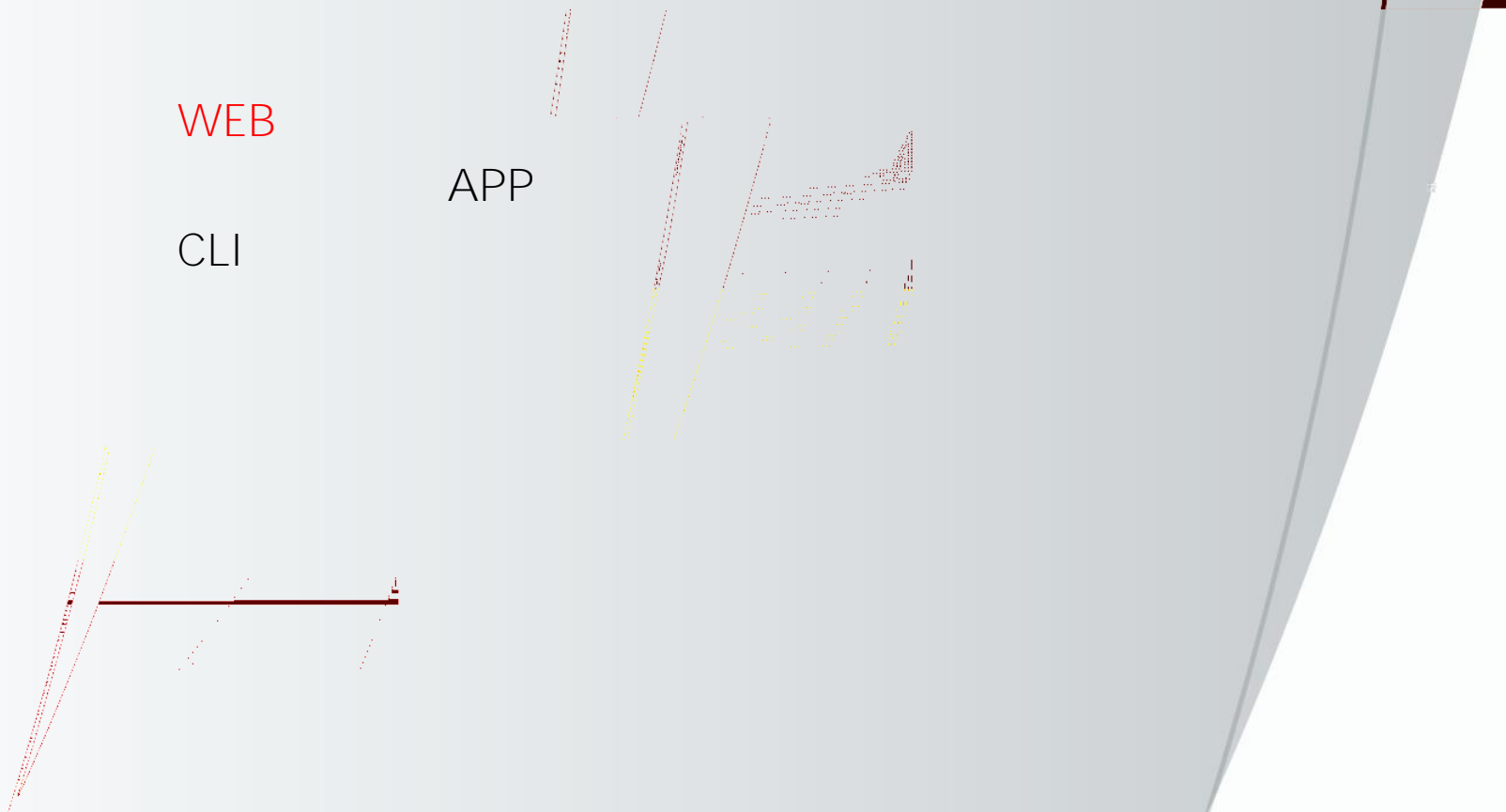




WEB

APP

CLI



WEB

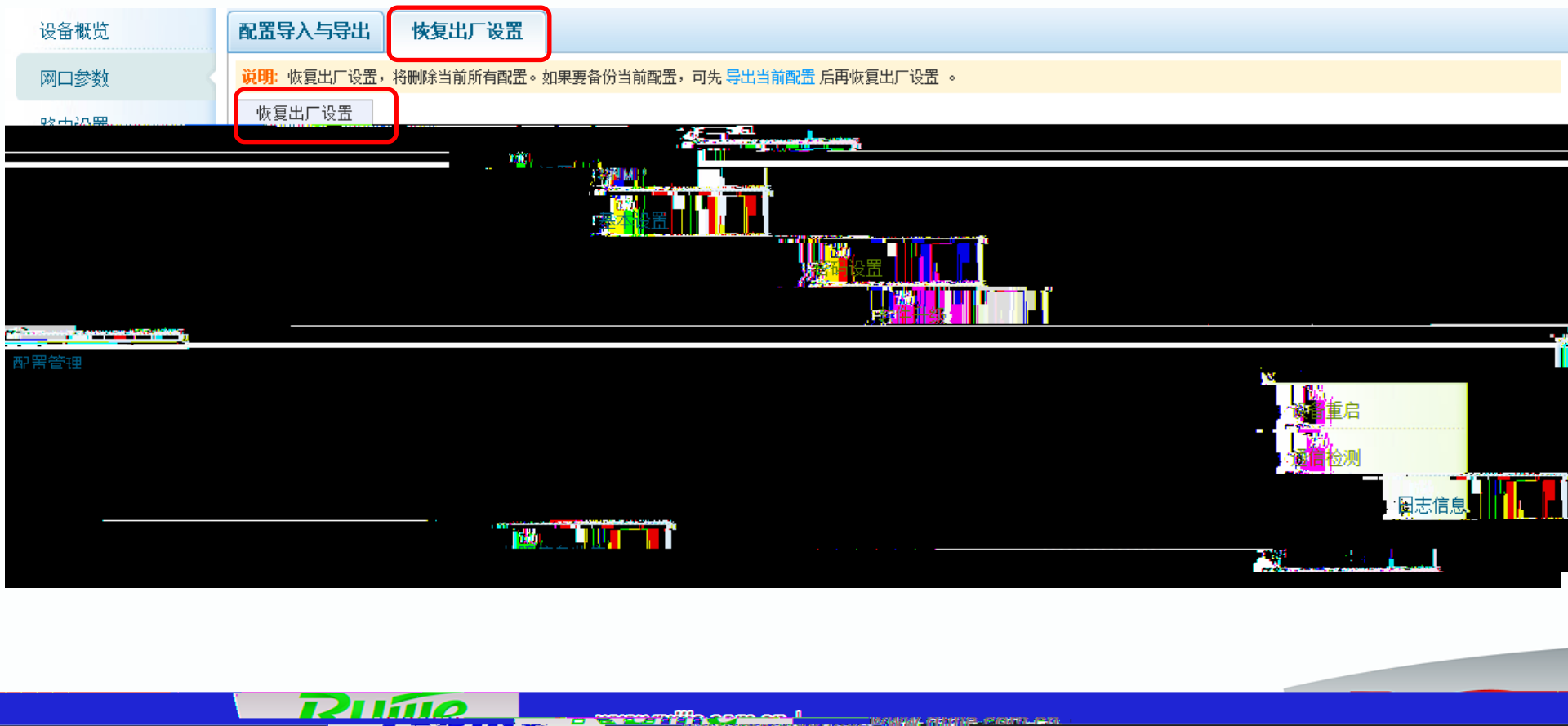
WEB

The screenshot displays a network management interface with several key sections:

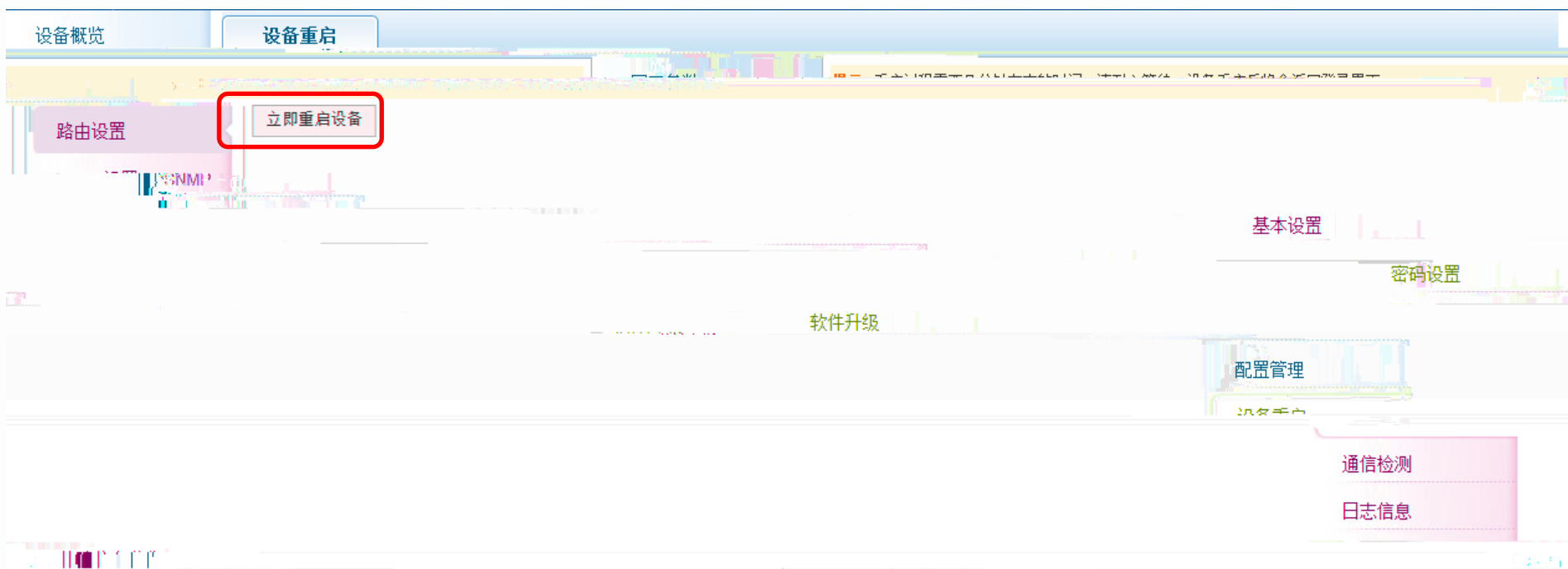
- 设备概览 (Device Overview):** Located at the top, it includes a table for interface information.
- 接口信息表 (Interface Information Table):** A table with columns for interface name, type, status, VLAN, and IP address. It lists GigabitEthernet 1/1, 1/2, and 1/3.
- 设备接口信息 (Device Interface Information):** A sidebar on the right showing details for the selected interface, including network operator (中国移动), 4G-SIM type (TDD-LTE), and SIM card status.
- 基本设置 (Basic Settings):** A section for configuring the interface, including IP address and VLAN.
- 配置管理 (Configuration Management):** A section for managing the device configuration.
- 设备温度及内存 (Device Temperature and Memory):** A monitoring section showing temperature and memory usage.
- CPU利用率 (CPU Usage):** A bar chart showing CPU usage, currently at 0.01%.
- 设备信息 (Device Information):** A section showing device details such as IP address (172.17.68.10), start time (2014年01月01日 15:00), system time (2014年01月01日 15:00), and runtime (41天 8小时 3分钟 51秒).

WEB

" config.text"
.text



WEB





WEB

Ping

icmp

Traceroute

4G

WEB

WEB

设备概览

系统日志

网口参数

显示系统日志

路由设置

SNMP设置

基本设置

密码设置

软件升级

配置管理

```
File name: rrsr820-tlog.txt, size 128 Kbytes, have written 8 files
Standard format: false
```

通信检测

日志信息

通信信息收集

WEB

CPU

设备概览

故障信息收集

网口参数

非传统配置

路由设置

SNMP设置

基本设置

System start time : 2014-08-04 15:50:17

密码设置

软件升级

System BOOT version : 10.4(3b13)T19 Release(175810)

日志信息

故障信息收集



Ruijie

Ruijie Networks

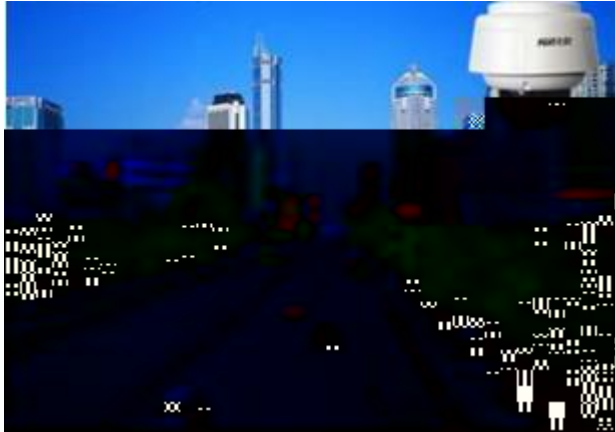
WEB

APP

CLI

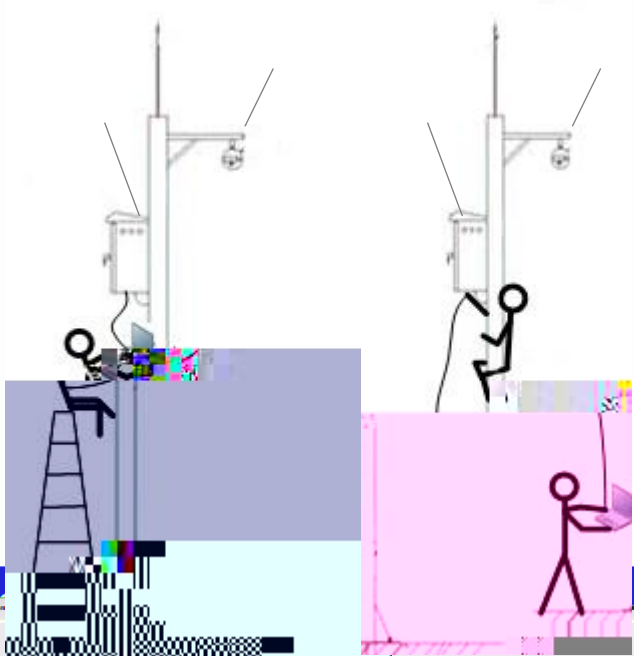


APP



1

2



**RSR10-01G-TD-
LTE RSR820-T/820-T(A)**

Ruijie



APP

Android

Android

"

" APP

<http://bnm.ruijie.com.cn>

"

"



APP

10



" 1234 "



APP



APP

4G
4G
SIM
CPU

4G

APP

.text

SD

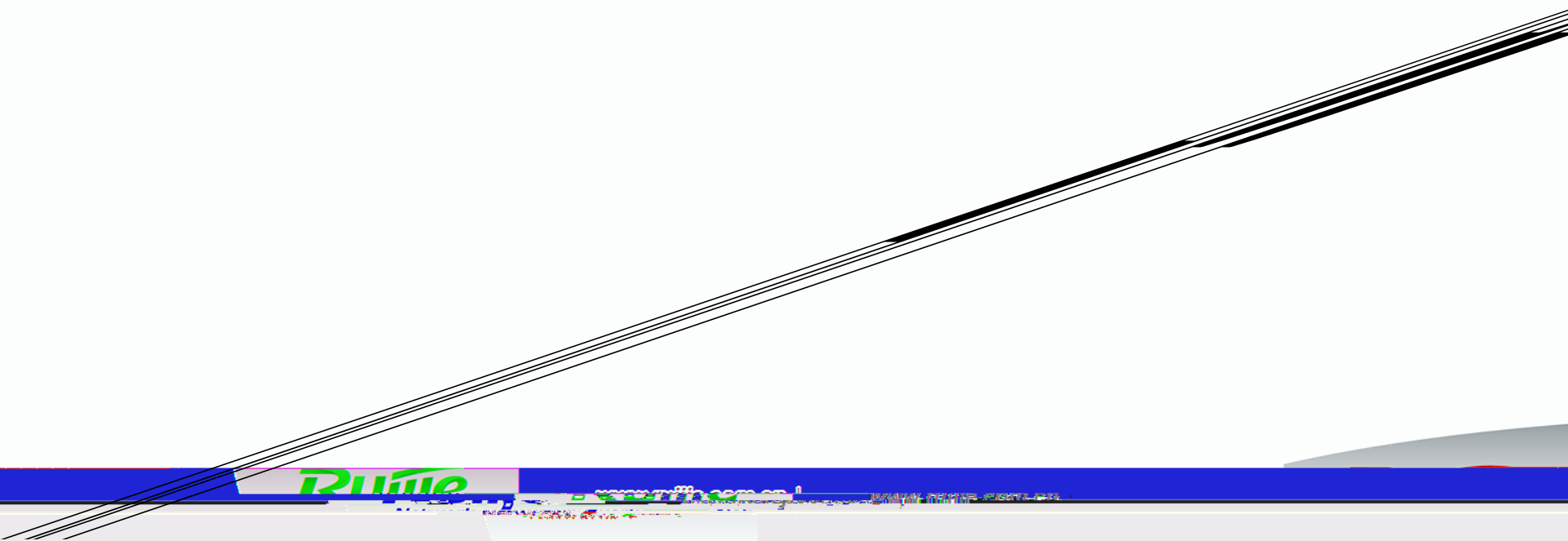
"

"





APP



APP

ICMP

4G

XX

4G

APP





APP

CLI

CLI

1

APP

2

APP

3

4

IP

5



APP

APP
txt

2G/3G/4G



APP

wifi

10

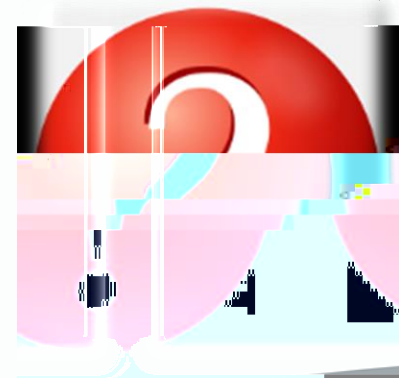
10

ruijie

ruijie

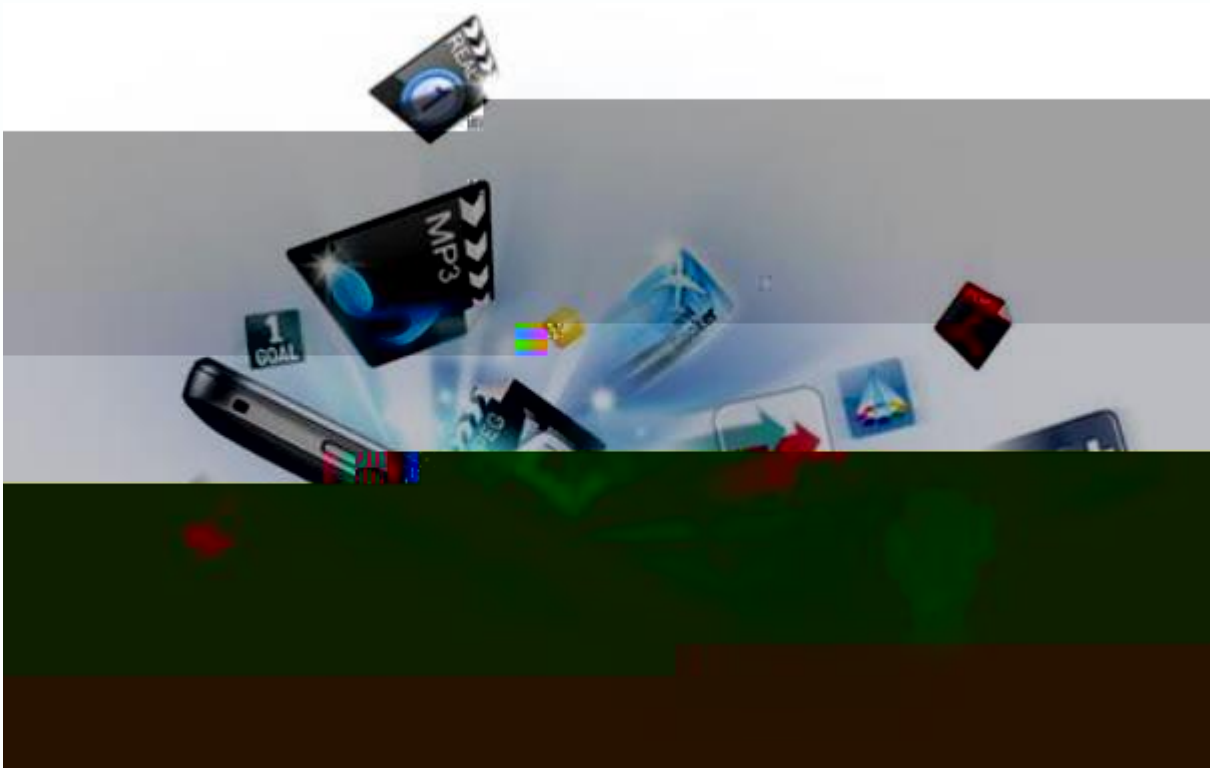
0000

1234

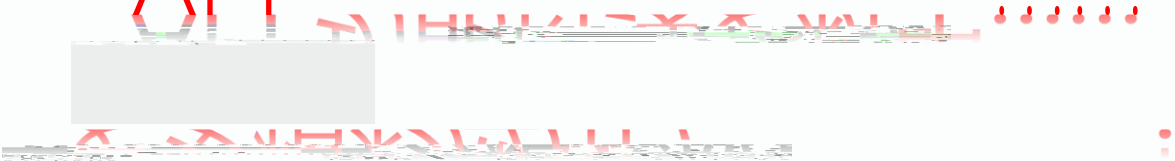




APP



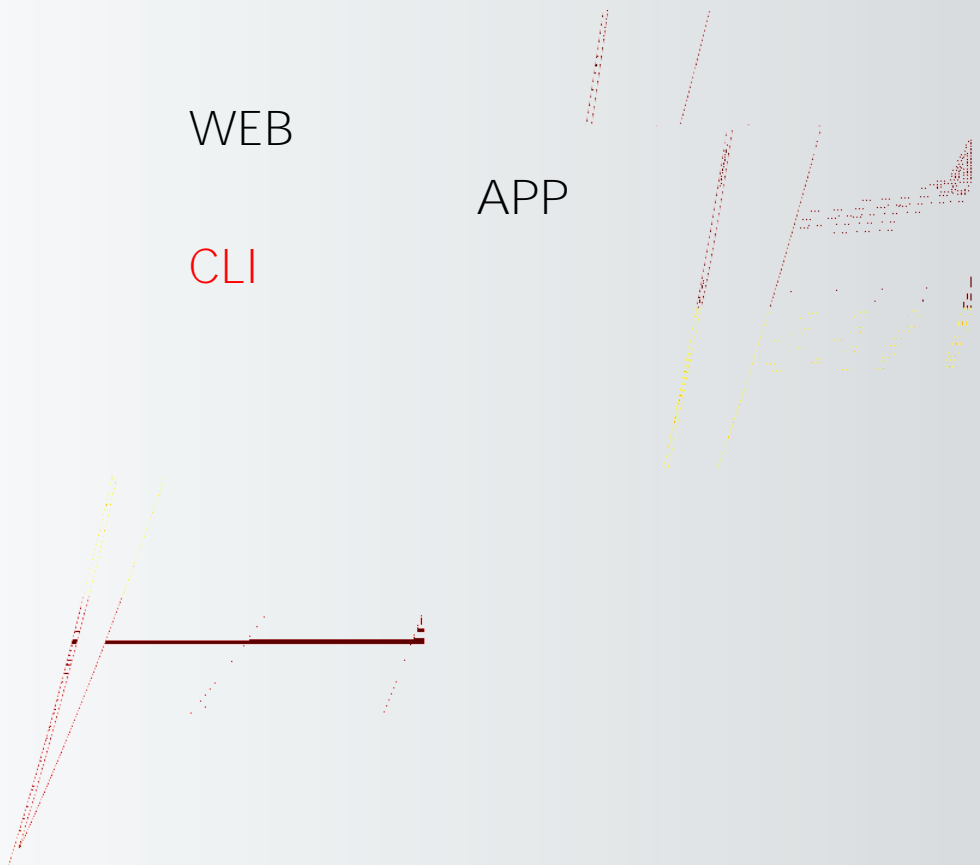
APP



WEB

APP

CLI



CLI

CLI

RSR820

RGOS

CLI

RGOS

CPU

show cpu cpu

Ruijie#show cpu

=====

CPU Using Rate Information

CPU utilization in five seconds: 12.12%

CPU utilization in one minute : 12.07%

CPU utilization in five minutes: 12.07%

show memory

Ruijie#show memory

System Memory Statistic:

Free pages: 54998

watermarks : min 2140, lower 4025, low 5910, high 7795

System Total Memory : 512MB, Current Free Memory : 225428KB

Used Rate : 57%



CLI

show interface

CLI

```
show log  
UP/DOWN DOWN !
```

```
flash
```

```
flash
```

```
Ruijie(config)#logging file flash:log 2000000 7 // 记录到flash
```



WEB

WEB IP

WEB

WEB

console

WEB IP

IP

<http://192.168.1.1>

Ruijie#show ip interface brief

Interface	IP-Address(Pri)	IP-Address(Sec)	Status	Protocol
VLAN 1	192.168.57.92/24	no address	up	up
Tunnel 1	2.2.2.2/24	no address	up	down
Cellular 0/0	no address	no address	down	down

console

Ruijie#show service

.....

web-server : enabled

web-server(https): enabled



console

console

PC

COM

Console

console



WEB

console

%Now Begin Download File FileList.txt From 192.168.64.1 to 192.168.64.78

send download request.

send download request.

.....

RGOS

TFTP

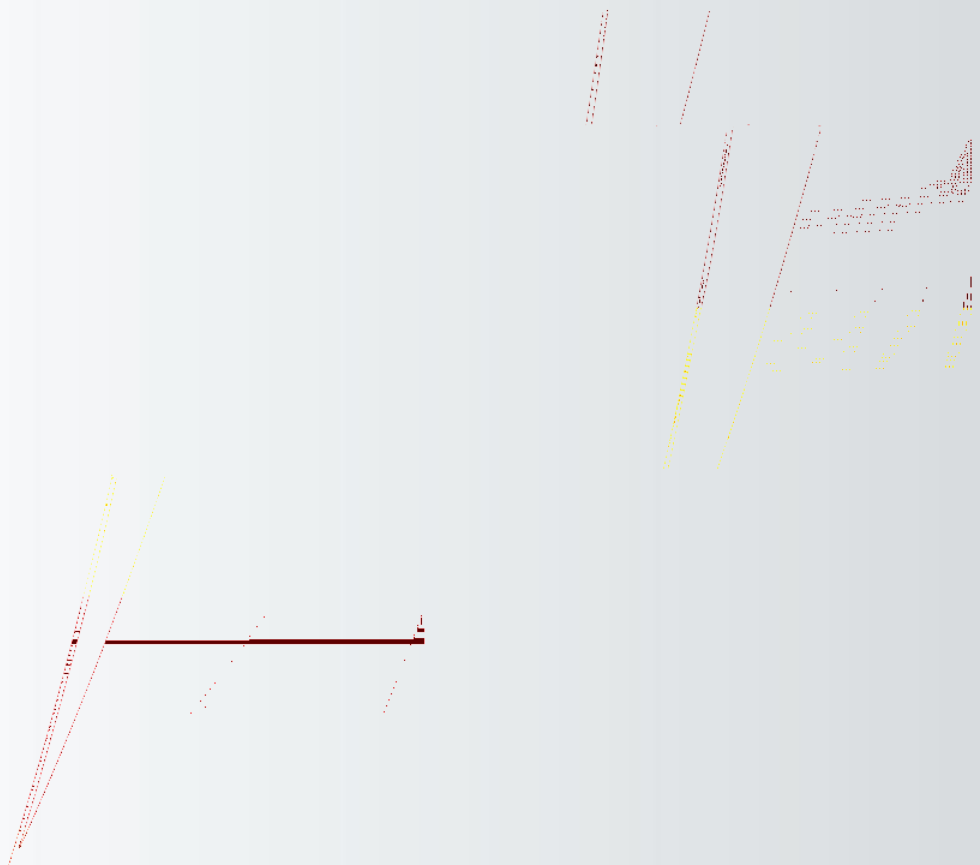
"

"

BOOT

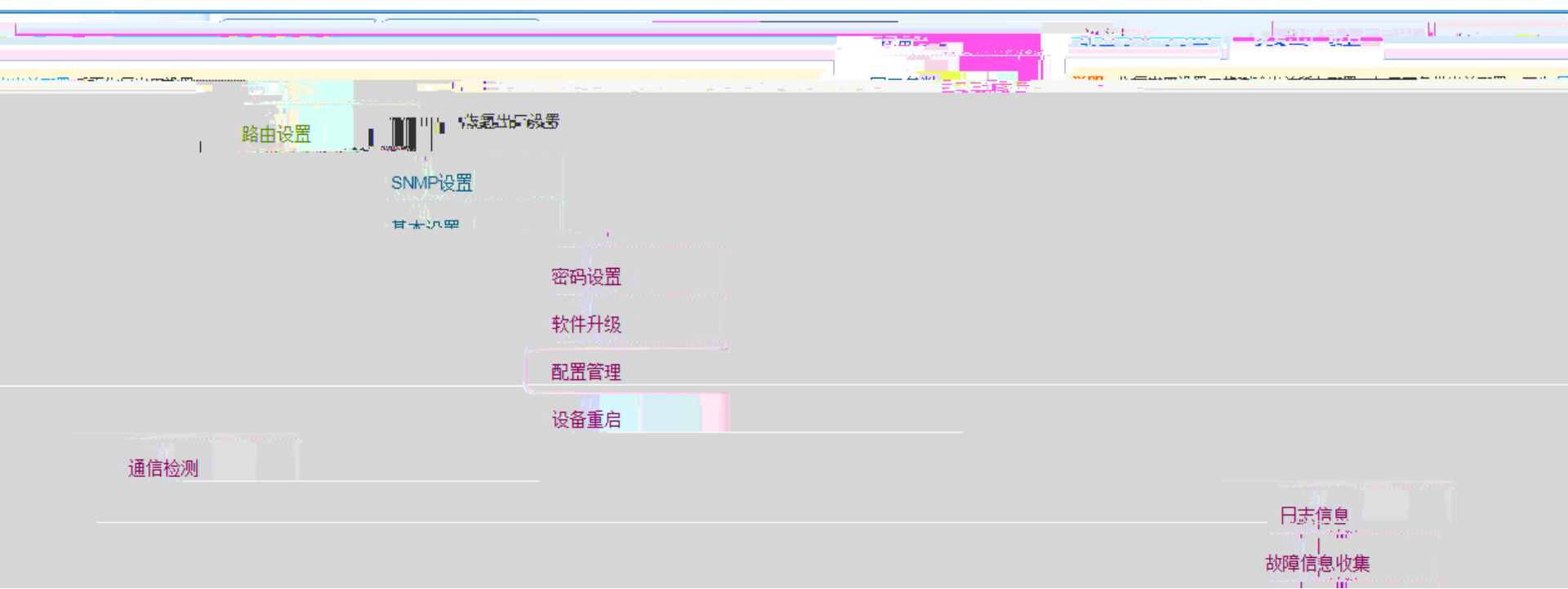


show slot



WEB

WEB



MAIN

Ruijie#dir

Directory of flash:/

Mode	Link	Size	MTime	Name
1		2363	2013-01-15 10:07:19	config.text
1		15107168	2013-01-15 09:47:59	rgos.bin

.....

Ruijie#copy flash:config.text flash:config.bak// config.bak

Ruijie#delete config.text //

Are you sure you want to delete " config.text" ?[No/yes]yes //

Ruijie#reload //

Proceed with reload? [no]y //

BOOT

console

" Press Ctrl+C to enter Boot" ctrl+c

boot

BootLoader>dir

Directory of flash:/

Mode	Link	Size	MTime	Name
1		512	2013-01-09 23:07:03	Boot_hotcmd.cfg
1		2363	2013-01-15 10:07:19	config.text
			
1		15107168	2013-01-15 09:47:59	rgos.bin

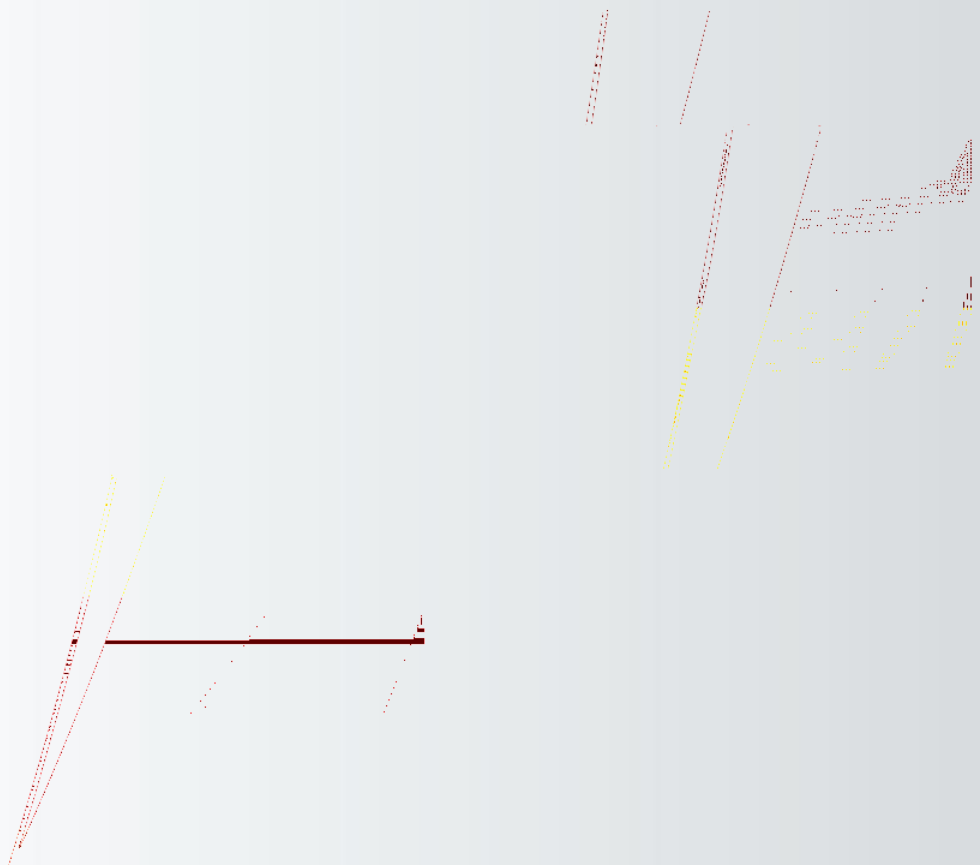
BOOT

```
BootLoader>rename config.text config.bak // config.bak
```

```
BootLoader>delete config.text //
```

```
BootLoader>load //
```

.....



WEB

WEB

" "

" "

" "


注意事项:

1. 软件升级可以系统固件 (*.bin)，升级完成后必须重启设备。
2. 软件升级可以升级MIB (*.mib)，升级完成后无需重启设备。

版本信息	
硬件版本:	1.00
软件版本:	RGOS 10.4(3b13)T19_R17703
WEB版本:	1.1.3(1.00433)

软件升级

TE_10.4(3b13)T19_R17703 | 浏览...

进度:  100%

信息: **升级成功。**

升级 | 开始升

软件升级
配置管理
设备重启
性能检测
日志信息

故障信息收集



BOOT

PC

TFTP

TFTP

ctrl+C

ROM

TFTP



Riite

... ..

... ..

www.ruijie.com.cn

www.ruijie.com.cn/service.aspx

support.ruijie.com.cn

webchat.ruijie.com.cn

4008-111-000