

www.ruijie.com.cn



PACS

2.4G

2.4G

APD 5G

5G

1
11ac

AP4210

AP4220

2.4G

2.4G 5G

2
HPOE

APD-M AC

APD-M EA
POE

3

2.4G+5G 11AC

2.0





AP

--RG-AP4220

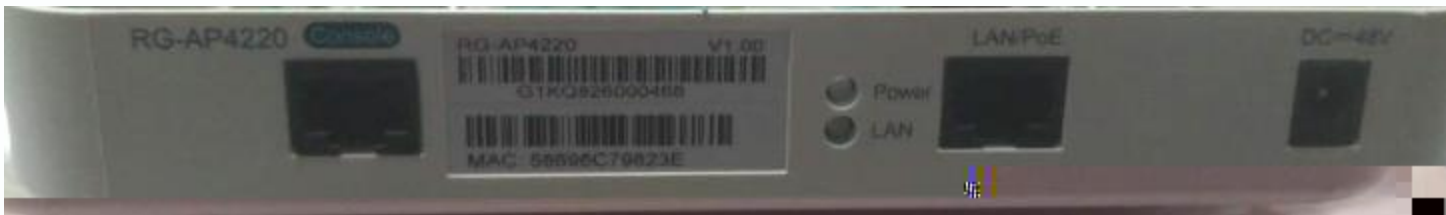
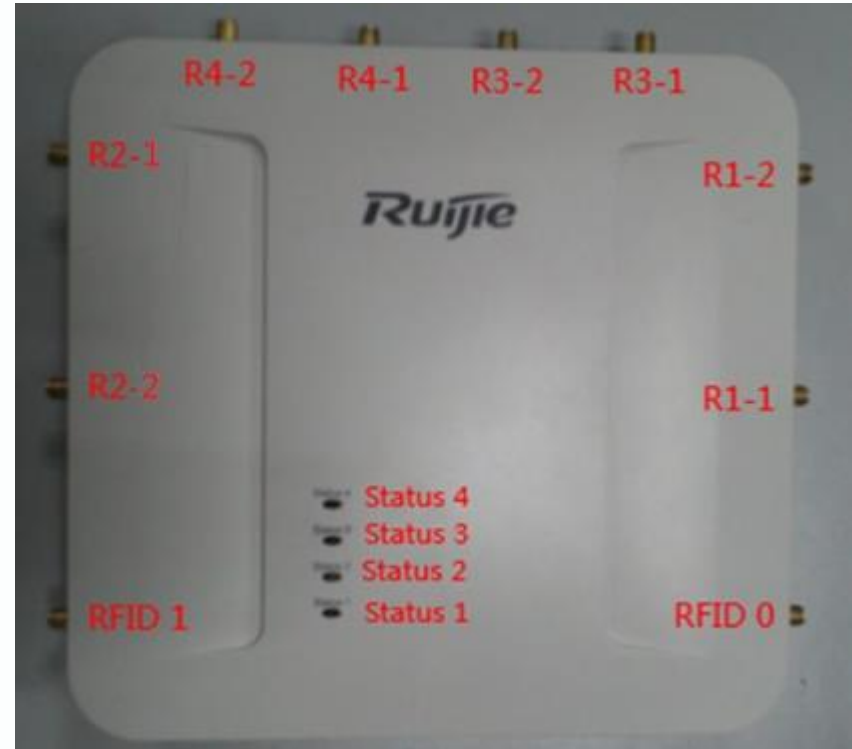
AP4220 10 8 WIFI 2

RFID 4

STATUS 1 R1-1 R1-2
R1-1 R1-2
R1-1 R1-2
R1-1 R1-2
R1-1 R1-2
radio

console LAN/POE

48V power LAN



AP

--RG-AP4220

		RG-AP4220
		AP
		802.11/b/g/n 802.11a/n/ac
		48V /0.5A DC
	POE	802.3af
		12.95W
		-10 50
		-40 70
		10% 95%
		5% 95%
x	x	mm
		200x190x35
		Kg
		0.8Kg



RG-APD-M(EA)

APD-M(EA)

APD-M(AC)

3 LAN

LAN2

HPOE



RG-APD-M EA





	18 SMA SMA	35 SMA SMA	5/10/15 SMA SMA
	RG-Cab-SMA-18m-MJ	RG-Cab-SMA-35m-MJ	RG-DCAB-SMA-5m/10m/15m-SP
(MHz)	2400 2500 5150~5850	2400 2500 5150~5850	2400 2500 5150~5850
(m)	18	35	5/10
	1.3	1.3	1.3
()	50	50	50
	SMA-SMA	SMA-SMA	SMA-SMA
	-10 +55	-10 +55	-10 +55
	-40 +70	-40 +70	-40 +70

RG-IOA-2503-X5

	RG-IOA-2503-X5
	×36
	0.14
dBi	7dBi@2400-2500MHz 5dBi@5150-5850MHz
	SMA
MHz	2400-2500MHz&5150-5850MHz
	-



SMA

24mm

46mm



--

RG-IOA-2503-X6



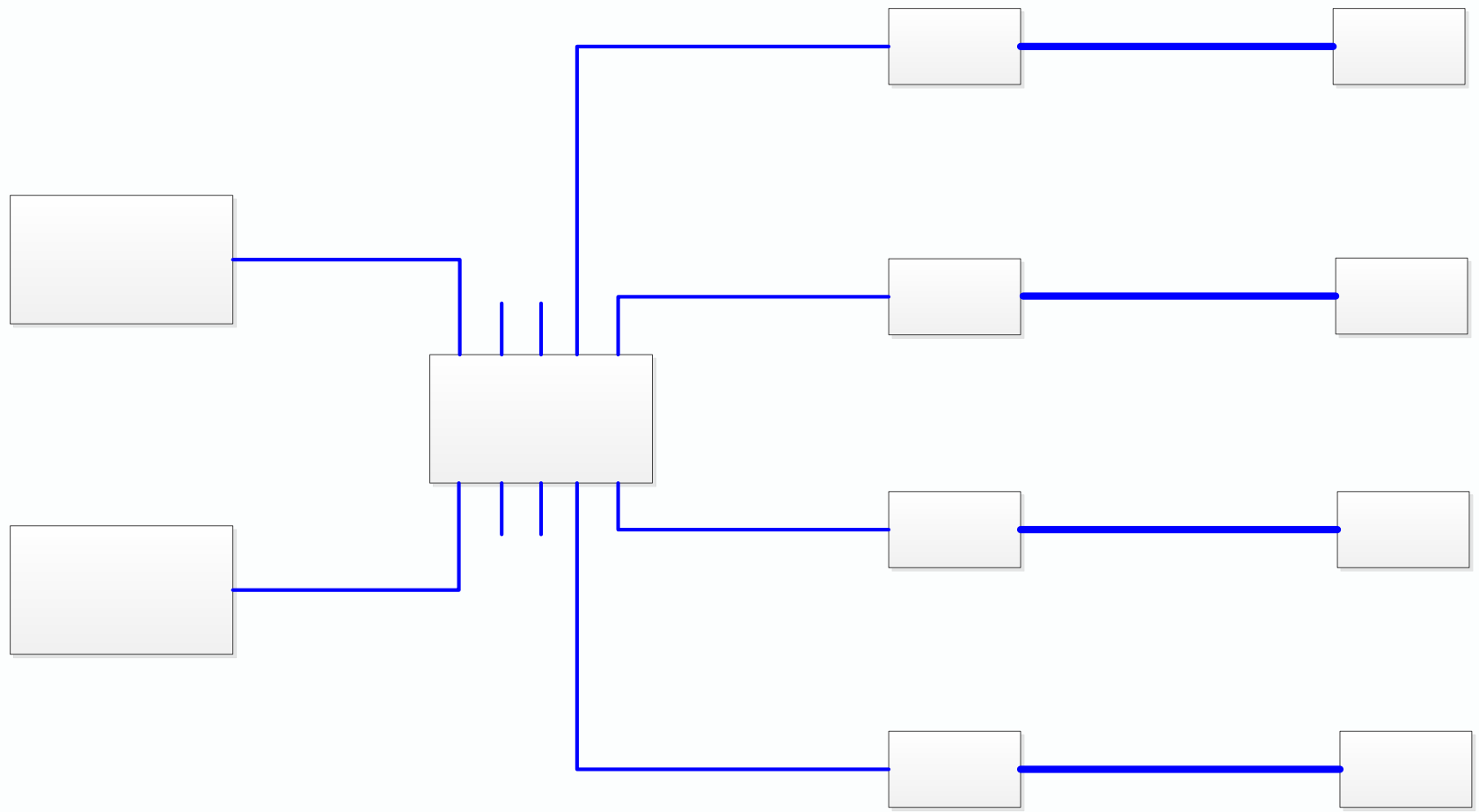
1 4 M3*16mm

2
>10cm

SMA

POE	XXXX-12/24P	1	POE
RG-AP4220	RG-AP4220	1	AP
	RG-APD-M EA	8	
RG-Cab-SMA-18m-MJ	SMA SMA 18m	8	18
RG-Cab-SMA-35m-MJ	SMA SMA 35m		35
RG-DCAB-SMA-5m	SMA SMA 5m	48	SMA SMA 5m
RG-DCAB-SMA-10m	SMA SMA 10m		SMA SMA 10m





APD-M EA

4

- 1 2.4G
- 2 5G 11ac
- 3 2.4G

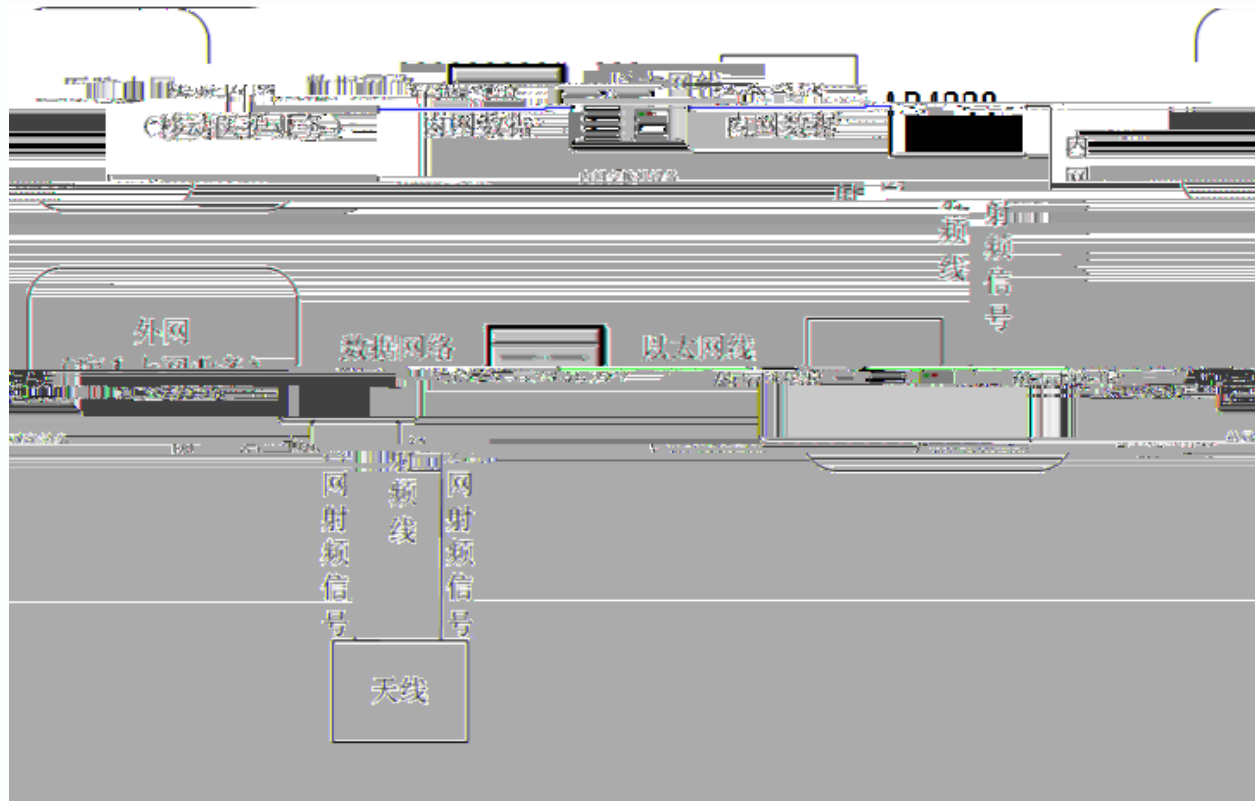


AP4220

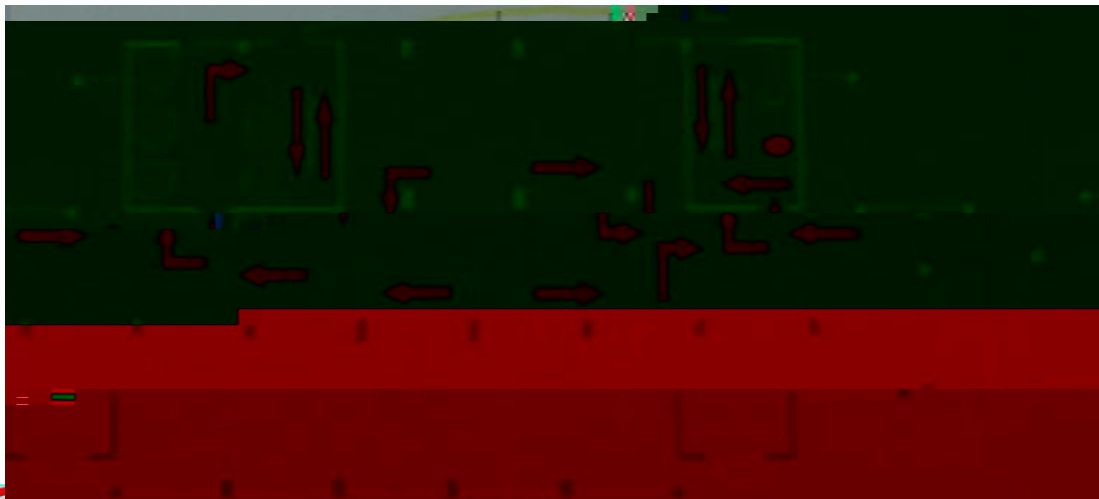
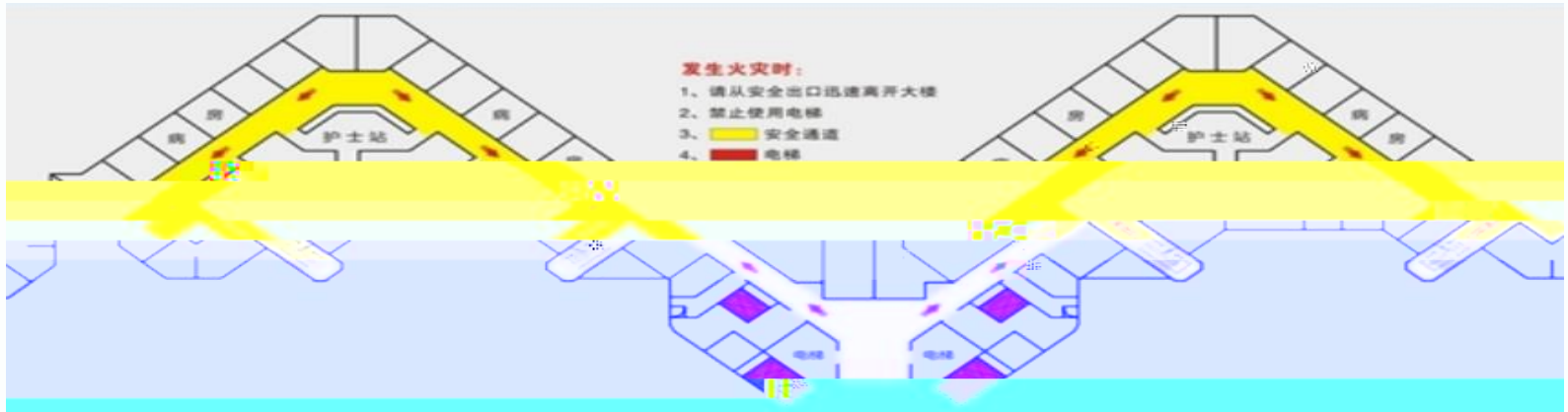
APD-M EA

APD

AP







1									
	a							48	
	b		AP			50			100
2		1	AP						
3			APD						
		4	2						
4			1		1				
5		5G						8	
	L				L				
6			AP						
7	APD-M	EA	POE+			POE			
					1	AP4220+8	APD-M	EA	
	2928G-12P					24P			
8	APD-M	EA		AP			AC	license	
			9	AP	AP4220+8	APD			
9	APD-M	EA		HPOE			LAN2		POE



AP4220 APD-M EA

1 AP4220 2.4G+5.8G 11ac
40Mb+200Mb

50Mb+270Mb

	2	5~6
	1~2	PACS 60Mbps 2

2 APD-M EA 2.4G

APD-M EA ap 11 1
AP4220 1 6 SSID

ap-config APD-EA-4
ap-mac 00d0.f822.35ba
ap-group APDMEA
no fair-schedule
channel 11 radio 1
channel 36 radio 2
chan-width 40 radio 2
apsd disable radio 1
apsd disable radio 2
antdetect enable

ap-config AP4220
ap-mac 00d0.f822.358e
ap-group fyyy4220
no fair-schedule
channel 1 radio 1
channel 149 radio 2
no short-gi enable radio 1 chan-width 20
802.11n mcs support 7 radio 1
apsd disable radio 1
power local 100 radio 2
antdetect enable

AP /

/
AP4220 short-gi

AP4220 APD

antdetect enable

```
AC#show antenna all
ap
-----
      0 1 2 0      0 1 2 0      0 1 2 0      0 1 2 0      0 1 2 0      0 1 2 0
-----
      - N N -      - N N -      - Y Y -      - Y N -      - - - -      - - - -AP4220
      - Y Y -      - Y Y -      - Y Y -      - Y Y -      - Y Y -      - N N -APD-02
      - Y Y -      - Y Y -      - Y Y -      - N N -      - Y Y -      - Y Y -APD-03
      - Y Y -      - Y Y -      - Y Y -      - N N -      - Y Y -      - Y Y -APD-01
-----
```

AC



AP

Ruijie#show antenna

```
R1 antenna 1: Y
R1 antenna 2: Y
R2 antenna 1: Y
R2 antenna 2: Y
R3 antenna 1: Y
R3 antenna 2: Y
R4 antenna 1: N
R4 antenna 2: N
```

```
R1 antenna 1: Y
R1 antenna 2: Y
R2 antenna 1: Y
R2 antenna 2: Y
R3 antenna 1: Y
R3 antenna 2: Y
R4 antenna 1: N
R4 antenna 2: N
```

APD-M EA
2.4G APD 5G 5G 11ac
11AC APD-M EA

ap-config APD-1

no zero-roam enable 5g

antenna receive

LAN POE APD-M EA LAN 2 HPOE
POE

```
ap-config APD-1  
wired-poe enable port 2
```

```
interface gigabitEthernet 0/2  
wired
```

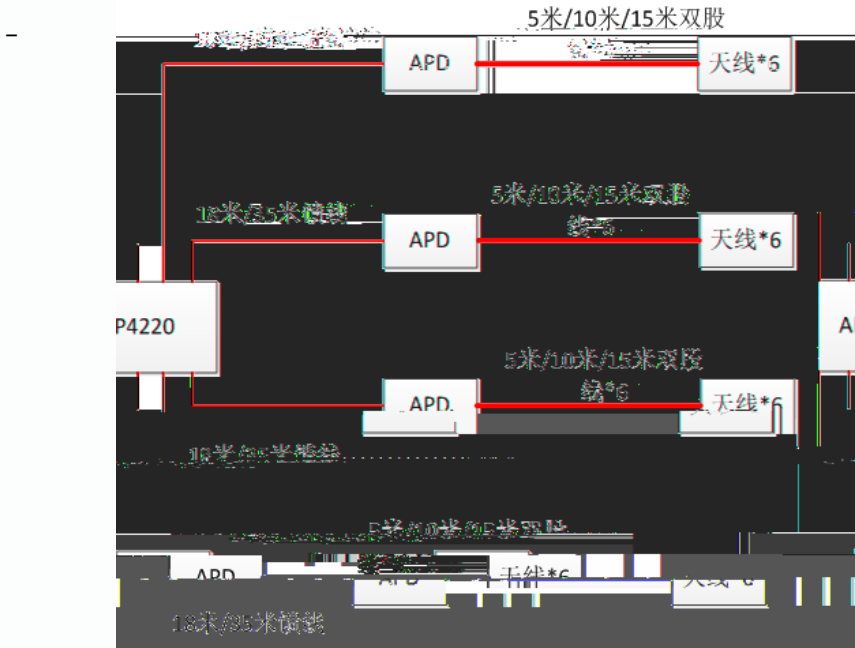




2.4G 1
 -30~-35dBm APD
 35~-40 10db

5G 1
 APD -40~-50dBm
 10db

2 6
 AP4220
 AP4220





1. PoE

POE/POE+

2.

36V~57V

◆ AP4220

	STATUS 1	R1-1	R1-2
1	R1-1	R1-2	
2	R1-1		R1-2
3	R1-1	R1	



AP4220 5G

1

2 APD-M EA radio 1 AP (2.4G +5G11ac) 2 AP4220
X5/X6

3 short-gi

4 FTP FTP server client

5 APD-M EA
AP

6 APD-M EA 2.4G +5G 2.4G 2.0
APD 2.4G +5G

7 5G

◆ XX



 乱0½0°p'úE«Æf
 ãÂpÓÍ·½°,²aÊÔ±”;



29

A 11

100036

Office Tel: 010-51718888 Mobile Tel: 13888888888 Fax: 010-51718888

www.ruijie.com.cn E-Mail: xxx@ruijie.com.cn