

RG-CT5000M

ù ¢

ù ^	1
1 "	1
2 ¢	1
2.1 xBÁ	1
2.2 xBÁ	1
3 yó-	2
3.1 yÄ	2
3.1.1 P<Z	2
3.1.2 xF^	2
3.1.3 ¢â	2
3.2 SSDÁ&	4
3.2.1 P<Z	4
3.2.2 xF^	5
3.2.3 ¢â	5
3.3 HDDÁ&	6
3.3.1 P<Z	6
3.3.2 xF^	7
3.3.3 ¢â	8
3.4 yF&	11
3.4.1 "	11
3.4.2 ¢â	11

1 é

RG-CT5000M © 2018

z ě

z SSD

z HDD

š ě g ě k ě 2 ož

2 ě

 #E

- % 6A0 = - LM μ f ,B- = āA0 =,° v ?+k\$Æ > ū>úA0 = »G 4ú , • D ,>ú v ? Ú- =M μ Ā=đĵ ,! D ĀF Ū+k\$Æ >
- .π ' &>žM © a = "(Ā #7 , Lh! • ...A0 = >
- 7 54ú , Ā — , ,B- 7 5 -Ei5N , = 5@ .æ J¼ Ā Ū&i , Fμ f • ... >
- ā 6405<F Ū , ,B- ...405<F Ū ž L - b ŷ —8B < - 0 ,6B C?.č ŷ405< > Ň405<°F Ū ž \ ?K7 Đ —8B L = =đĵ , ūN± ~ ' 6 ' " ,! D ā 6405<F Ū > ā 6405<F Ū , , ě < - ZEi B , 0 , f : e F Ū ž J¼ >F Ū405< , ,π 1% ĀF Ū ž i G!™.π - /U† >

 B*D

Āé(Ā)N073DbB*D;6v/pN0?VCBB-ĀĀ

2.1 ě Ń ě

9Cĵ

- (1) GWημokZ(0ě
- (2) ě
- (3) ěož
- (4) • ěŃŃož
- (5) ě77Z 10~15a >ěž

 #E

pLhM+k;B-0jLhM+k7LLhM+kC>

2.2 ě Ń ě

Ā x 5Bĵ

- (1) 1ě
- (2) 1ěož
- (3) ě

3

z iHCE

z o! 0E0 oš https://mall.ruijie.com.cn/?utm_source=gwzhdh

z Ó 30... https://ruijie.feishu.cn/docx/E9CZdjrfLofcMOxtFKccdOjNnug?from=from_copylink

Ó CU... kE'' 2W... yFAÖ

noš y <https://rview.ruijie.com.cn/#/openForm/542>

ç 3-1

3.1

⚠ #E

图 3-2

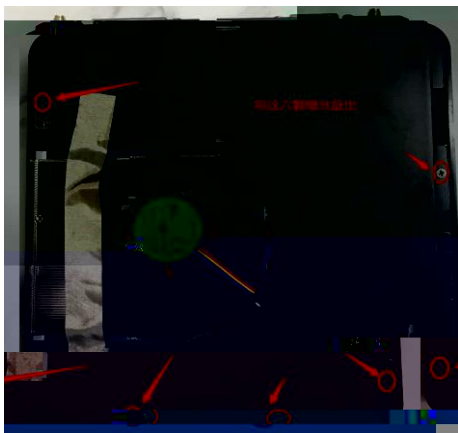


(2) 步骤 6 和 7



注意：将设备放平，朝左侧将上盖推出。

图 3-3



(3) 步骤 8 SODIMM DDR4

1. 将设备放平，朝左侧将上盖推出。

2. 将设备放平，朝左侧将上盖推出。



- 在操作过程中，请勿触摸电路板上的任何元件。
- 在操作过程中，请勿将设备暴露在潮湿、高温或阳光下。

3-4

(4) =NgKeôÿXyÉ/ž ož

i B*D
Lhe7=1' CjMFLh-K7,01%8@ >

3-5

3.2 SSD 4E


3.2.1 1Y

SSD 4E<... M.2NM 2280 SSDk 4E

= 3-2 ¥

Y	ž	y
1	Kingston 512GB	NGFF SSDk RBU-SNS8180S3/512GJk 512GBk No Cachek M.2 2280k 80*22*1.35

RG-

 #E			
• SSD0=SB-5X9@,°	SSDM6?#CS0D	>	
• SSDp=G,β15-C0A5>	*M6#3#	>	

φ 3-8 ㄨ SSD

(4) =ŃgKéyĕŕXyĕ/žž


 #E	
Lhe7=1' CjMFLh-K7,01%6@>	


φ 3-9 ƒ

(5) GskghA•

Y	ž	yf
		+55k ASSk LFk Toshiba
2	Toshiba 1TB	HDDk k MQ04ABF100k 1TBk 128MBk 2.5" 69.85*100*7mmk 5400Rpmk SATAIIIk 0½+60k ASSk RoSHk Toshiba
3	Toshiba 2TB	HDDk c' k MQ04ABD200k 2TBk 128MBk 2.5" 69.85*100*9.5mmk 5400Rpmk SATAIIIk 0½+60k ASSk LF_ k Toshiba
4	f 500GB	HDDk Bg g WDh R& 500GB SATA6Gb/s 5400ô 16MB f& g WD5000LPCXh
5	f 1TB	HDDk Bg g WDh R& 1TB 5400ô 128M SATA6Gb/s f& g WD10SPZXh
6	f 2TB	HDDk Bg g WDh R& 2TB SATA6Gb/s 5400ô 128MB f& g WD20SPZXh
7	f 4TB	HDDk Bg g WDh R& 4TB SATA6Gb/s 5400ô 128MB f& g WD40NPZZh
8	eH 4TB	HDDk eH (SEAGATE)aã 2.56* 4TB 5400ô 128MB SATA3 ST4000LM024
9	Samsung 250GB	SSDk g SAMSUNGh 250GB SSDf& SATA3.0NM 860 EVOg MZ-76E250Bh
10	Samsung 500GB	SSDk g SAMSUNGh 500GB SSDf& SATA3.0NM 860 EVOg MZ-76E500Bh
11	Kingston 240GB	SSDk PÑ g Kingstonh 240GB SSDf& SATA3.0NM A400ç
12	Kingston 480GB	SSDk PÑ g Kingstonh 480GB SSDf& SATA3.0NM A400ç

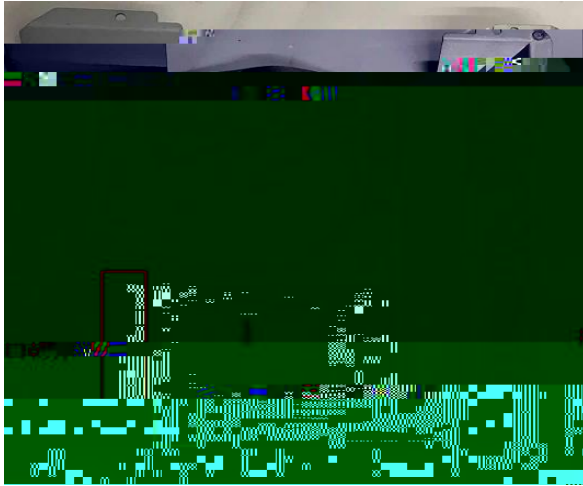
3.3.2 G]

 B*D
Gj00/E V-57160116-100>

 #E
4p%HDD.(GEM6?)"Cc>CBA'ú4p&EÇs-B,
3XR3X9L6B40 > PE400

- z F& *4
- z f *4
- z SATAj *1
- z až *1
- z ý ž *1
- z ó *1

3-12 0 Z



(4) R k 0 PK 0 4 M3*4Y i ož

! #E

=S 0D .c CP%Z +^A K7±Lh<7,Cj() ZÁ >

3-12 M



(5) R k 1F& N % € VFR P 0 NY 0 F& NM ož

! #E

Ů 0% ,° SATAŮ M6?+^90bĵ ,>

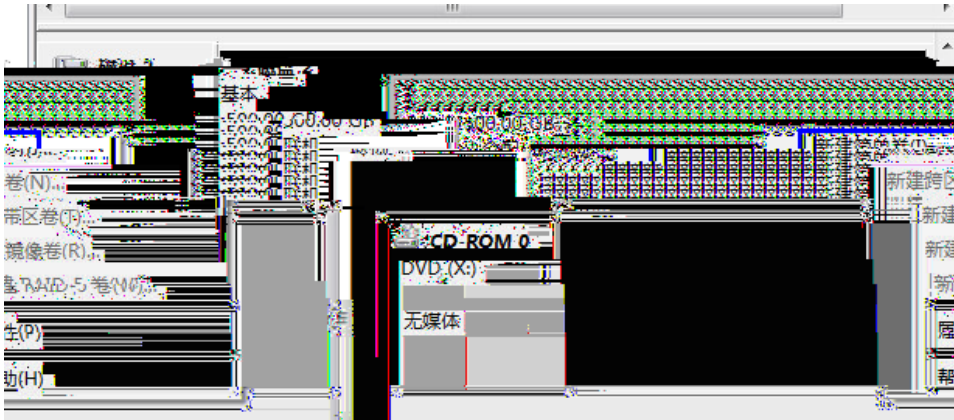
ç 3-13 ð ð é SATA L

ç 3-

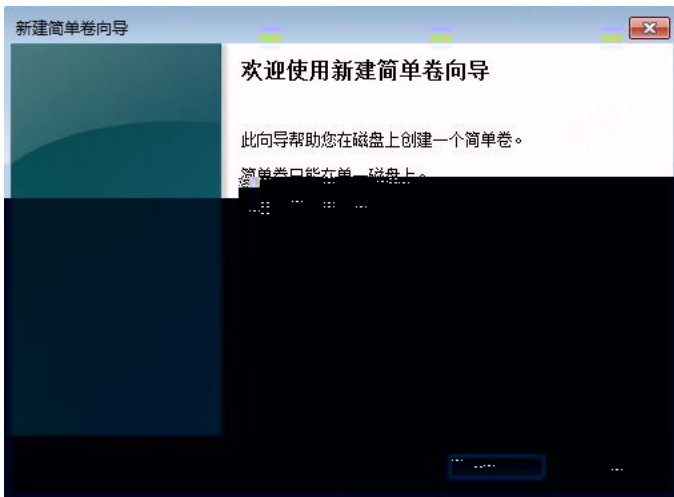
3.4 **ö** **ö**

(3) Xb1B#+2ož

图 3-17



(4) 图 3-18 <5% >7Zož

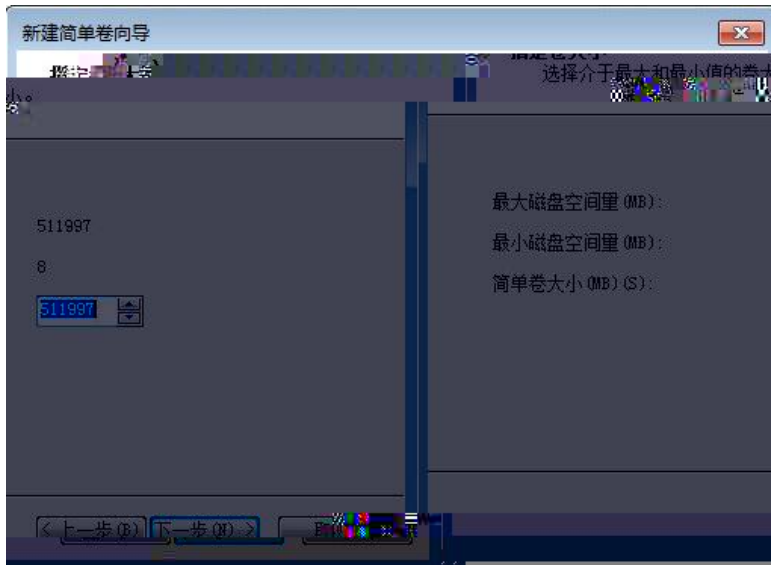


(5) #+žož

图 3-19 B*D

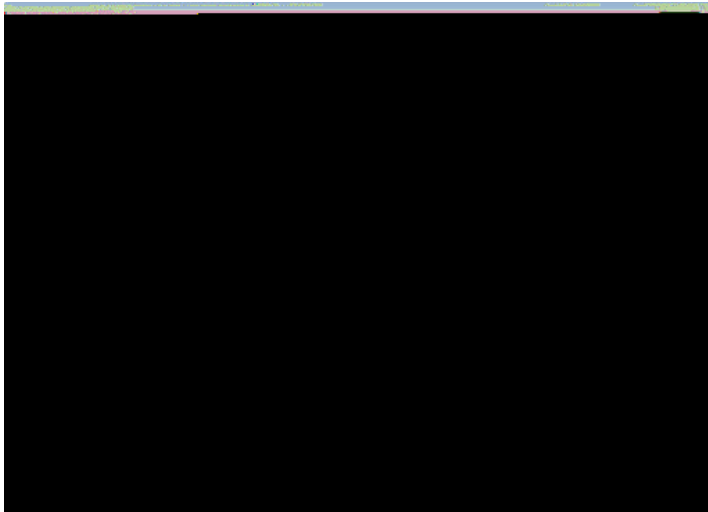
9M6?H<P<p%&#E>B<v?..:0L*H<p6<p>

图 3-18



(6) #+E kèà <5% >7Zož

图 3-19



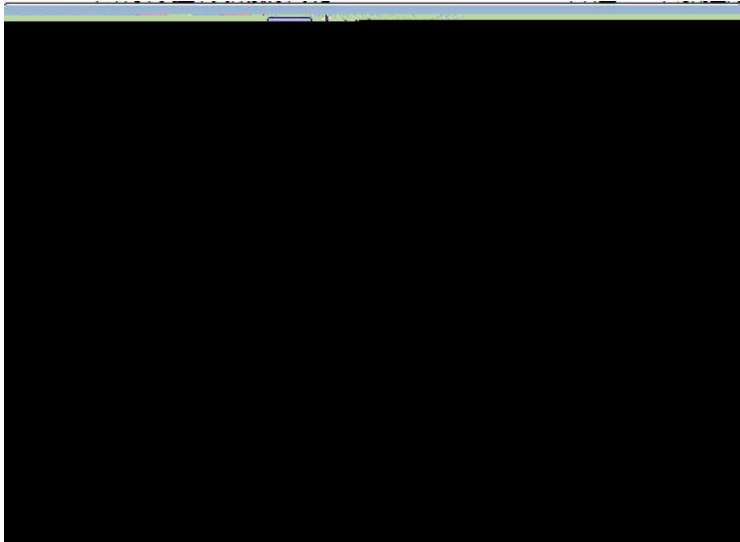
(7) wE+Oí NTFSgby2dfgUgjož



B*D

- >,IFU r e L %] j5_# r e L F U Ú >
- 9 e æ Ô.ç- , p&p OAä 7U AÚ 4F?(î 7 , \ O < ?E'Kµ,° r e L ,L*1• » >

图 3-20 a



(8) 按 <G> 键

图 3-21 b



图 3-22

图 3-22 b

