



RG-IDP 2500E V2.0

V1.0

©2013-2021

7× 24

<http://www.ruijie.com.cn/>
<http://webchat.ruijie.com.cn>
<http://www.ruijie.com.cn/service.aspx>
4008-111-000
<http://support.ruijie.com.cn>
service@ruijie.com.cn

	RG-IDP 2500E V2.0
	1.0

1

RG-IDP 2500E V2.0

IPSec SSL VPN Web
 IPv4 IPv6 NAC SSL

RG-

IDP 2500E V2.0

RG-IDP 2500E V2.0

1.1 RG-IDP 2500E V2.0

	RG-IDP 2500E V2.0
	0 to 40°C
	-25 to 70°C
	20% 90% RH
	5.6Kg
	254 x 432 x 44 L * W * H mm 1RU
	100-240 VAC, 50-60 Hz
	110 V / 3 A, 220 V / 1.5 A
/	35.1W/38.7 W
	119.77 BTU/h

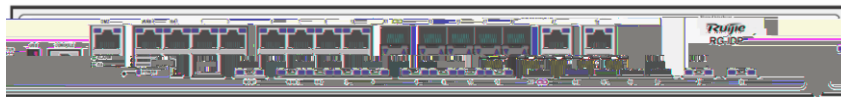
RG-IDP2500E A

RG-IDP 2500E V2.0

1

/HA 2 RJ45 WAN 2 DMZ 1 SFP 1 USB 38 GE RJ45 1 Console 2 GE RJ45

1-1 RG-IDP 2500E V2.0



RG-IDP 2500E V2.0

1-2

2

2.1

RG-IDP 2500E V2.0

2.1.1

1~10

" 3.8

2.2.3

RG-IDP 2500E V2.0

RG-IDP 2500E V2.0

0°C-40°C	20%-90%
	1.5M 0.4M

2.2.4

	0.5	1	3	5
/	1.4 x 10	7 x 10	2.4 x 10	1.3 x 10

RG-IDP 2500E V2.0

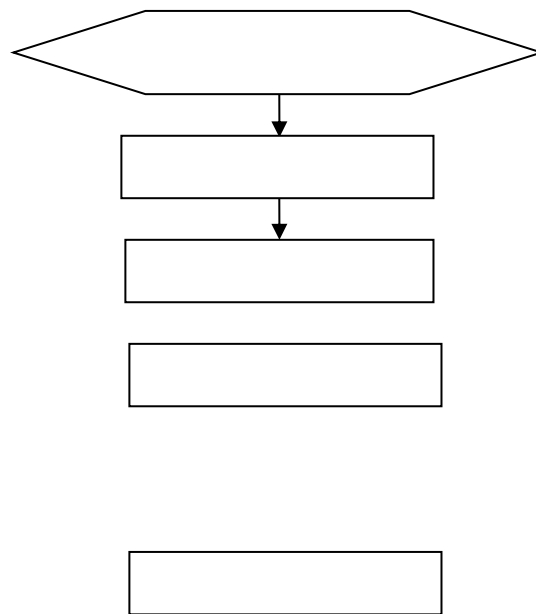
	mg/m ³	mg/m ³
--	-------------------	-------------------

2.2.7 EMI

3

RG-IDP 2500E V2.0

3.1



3.2

RG-IDP 2500E V2.0

3.3

5mm

1.5cm

- 1)
- 2)
- 3)

RG-IDP 2500E V2.0

RG-IDP 2500E V2.0

3.4

RG-IDP 2500E V2.0

10mm

5)

6)

7)

3.5

16A

8)

9)

3

1.5

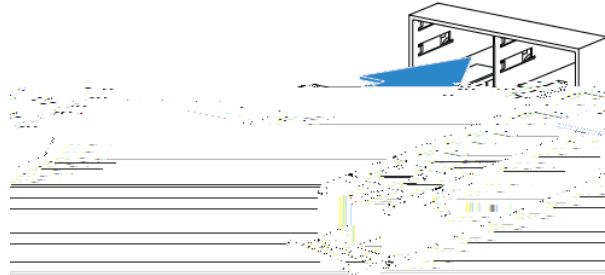
14AWG

3.6

10)

19)

- 1.
- 2. SFP
- 3.
- 4. SFP
SFP



3-7

- 5.
- 6.

SFP

SFP

3.10

SFP

- 20)
- 21)
- 22)
- 23)
- 24)

SFP

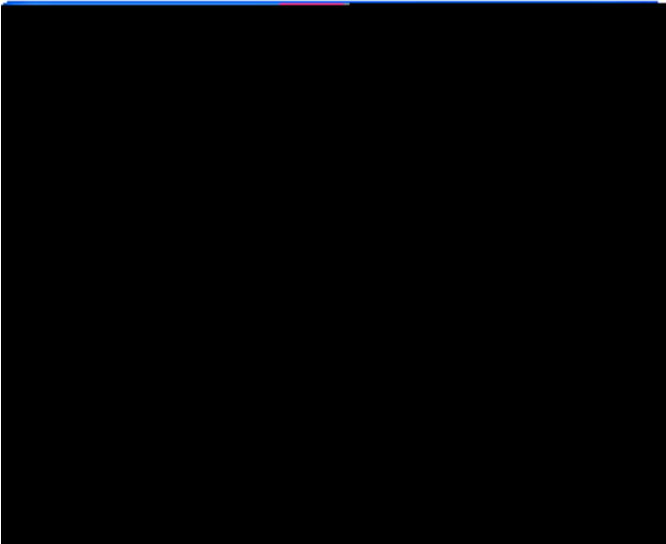
4

4.1

PC

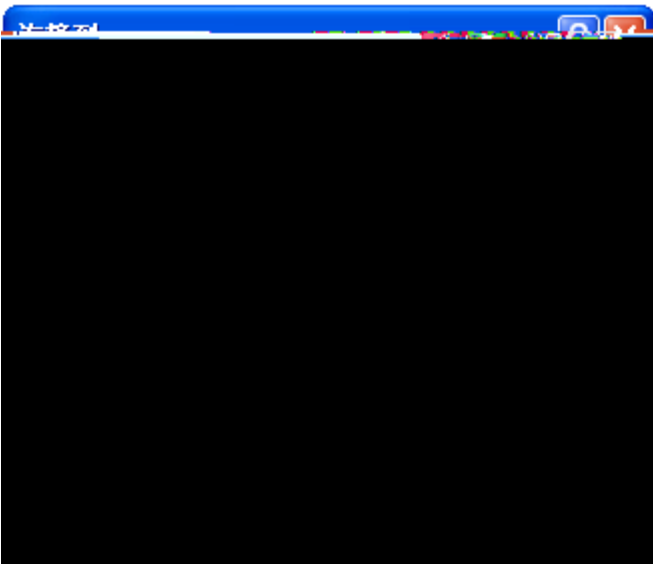
Console .

25)



29)

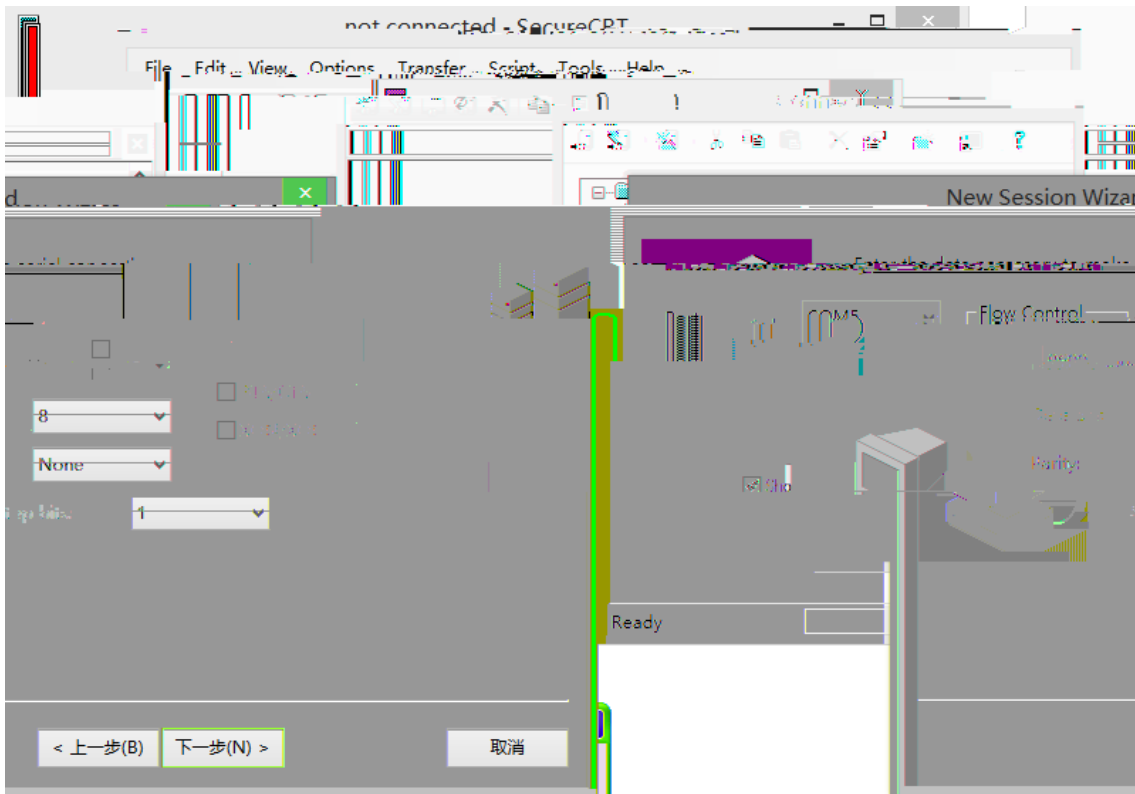
4-3



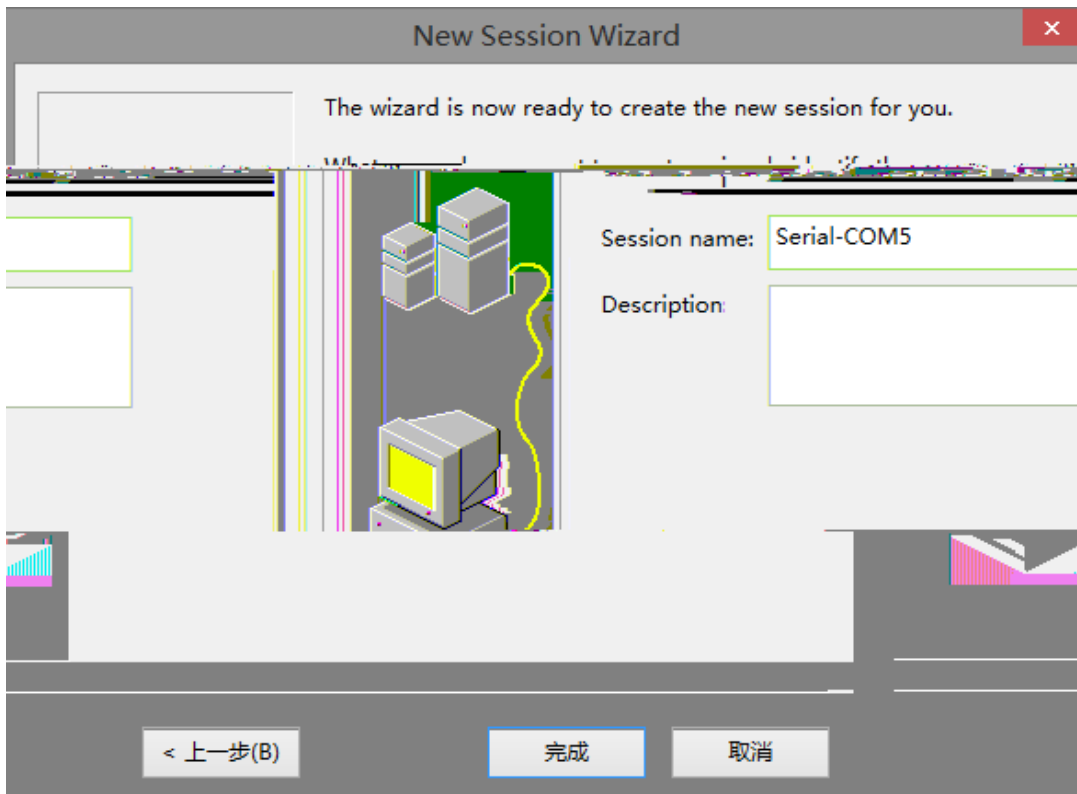
30)

4-4

31)



4-9



4-10



4-11

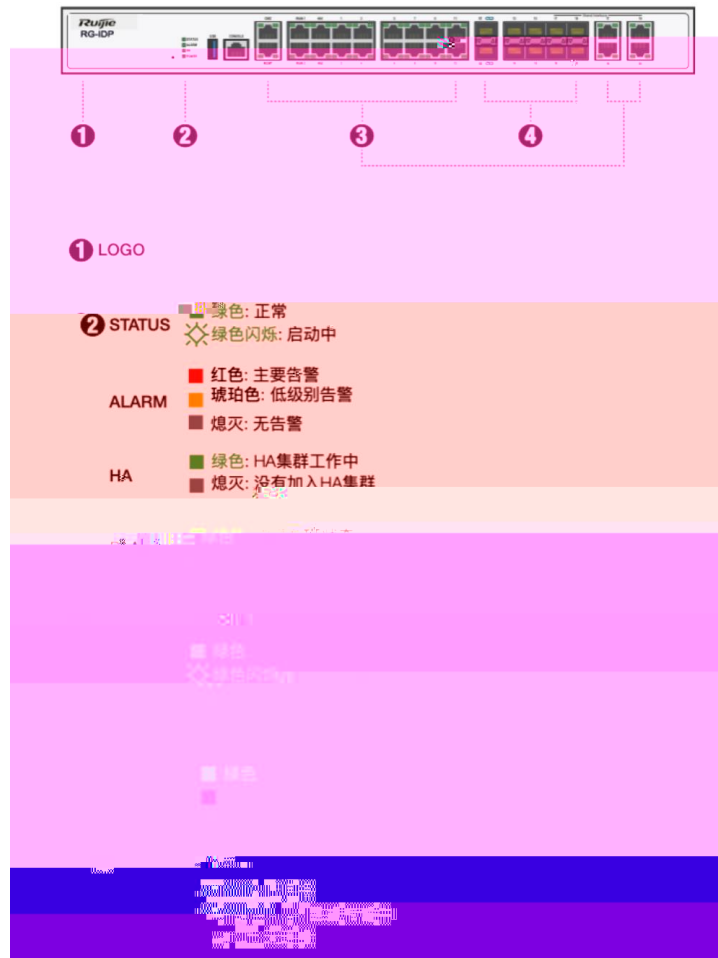
4.2

5

5.1

RG-IDP 2500E V2.0

5-1 RG-IDP 2500E V2.0



RG-IDP 2500E V2.0

RG-IDP 2500E V2.0
IDP 2500E V2.0

RG-IDP 2500E V2.0 Internet
RG-IDP 2500E V2.0

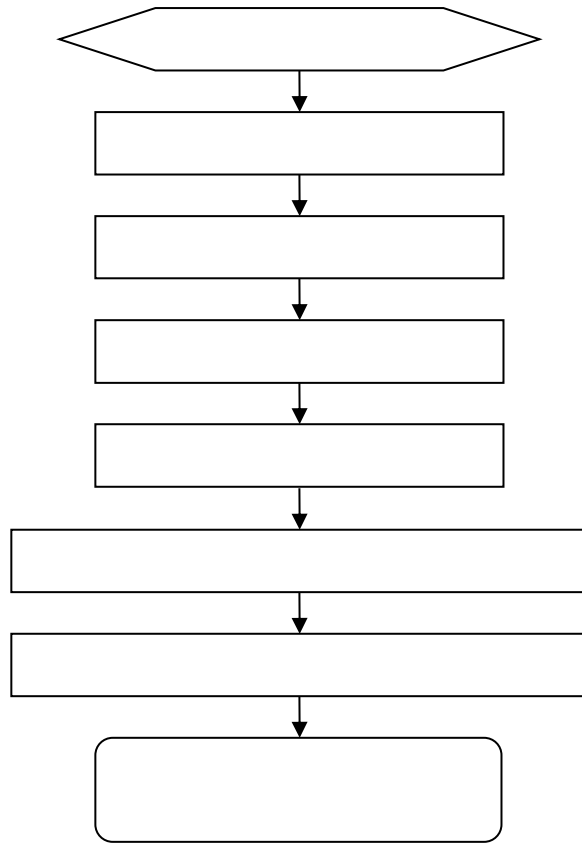
Telnet

RG-

5.2

6

6.1



6.2

Status

Power

link

1

2

1310nm

1550nm

3

4

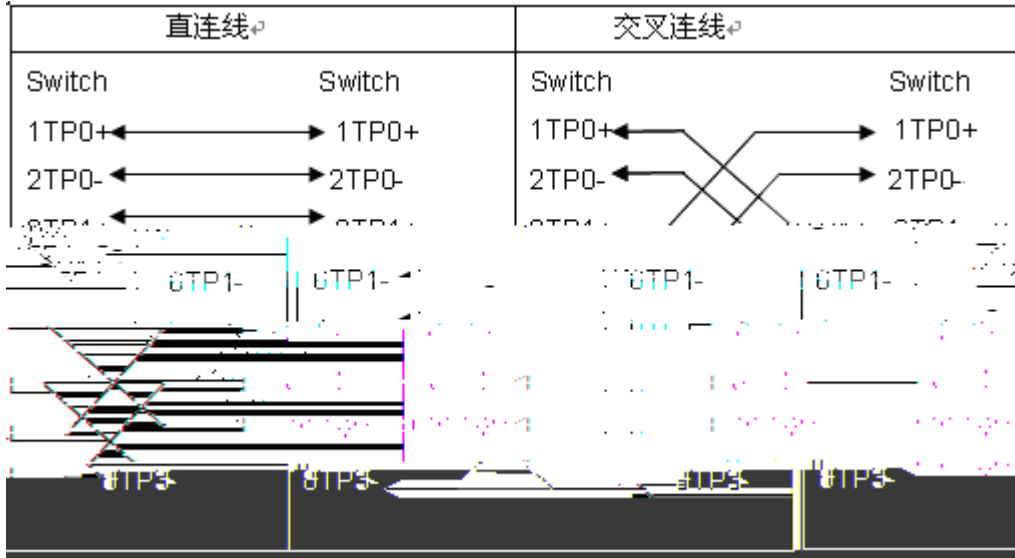
A

1000BASE-T/100BASE-TX/10BASE-T

MDI/MDIX Crossover

1000BASE-T IEEE 802.3ab 100 1000BASE-T 4 100-ohm 5 5 4 UTP 4 STP 1000BASE-T

A-1 1000BASE-T



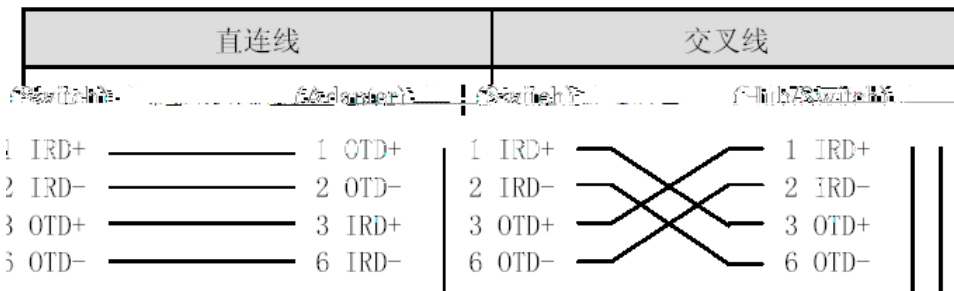
100BASE-TX/10BASE-T 100-ohm 5 100 10Mbps 100BASE-TX/10BASE-T 100-ohm 3,4,5 100Mbps

A-2 100BASE-TX/10BASE-T

Pin	插座	插头
1	Input Receive Data+	Output Transmit Data+
2	Input Receive Data-	Output Transmit Data-

100BASE-TX/10BASE-T

A-3 100BASE-TX/10BASE-T



A 4



B

RG-IDP 2500E V2.0

19

7

5

7

10

SFP+

5

10

25

⊕

(

D-3

D-3

220V 41712 Tm0.2 Gp0.84 MCID .0004 BDC 0.000008871 0 595.32 841.92 re2BT/F5 9 Tfl 0 0 1 103.34 238.49 Tm0.2 g0.2 G

mm