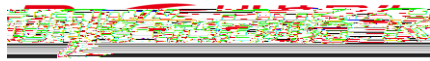




©2013



Ruijie



锐捷®

<http://www.ruijie.com.cn/>

	RG-WALL1600-M5100E
	1.0
	PDF

1

RG-WALL1600-M5100E

IPSec SSL VPN Web
IPv4 IPv6 NAC SSL

RG-WALL1600-M5100E

RG-WALL1600-M5100E

1.1 RG-WALL1600-M5100E

	RG-WALL1600-M5100E
	0 to 40°C
	-25 to 70°C
	20% 90% RH
	5.6Kg
	394x432 x 44.45 L * W * H mm 1RU
	100-240 VAC, 50-60 Hz
	110 V / 3 A, 220 V / 1.5 A
/	34W/40 W
	335 BTU/h

RG-M5100E

A

RG-WALL1600-M5100E

1

3+5 Q ‡ Ö3+5 Q ‡

1 USB

RG-WALL1600-M5100E

1-2

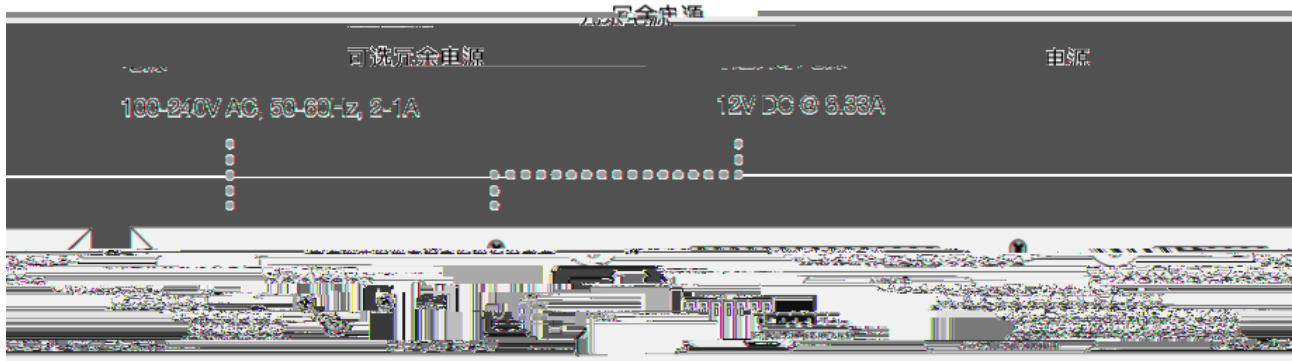
1-2 RG-WALL1600-M5100E

以太网端口 1 - 38 (RJ-45)

千兆以太网连接

WAN 端口 1 & 2 (RJ-45)

千兆以太网连接



2

0μ\$#Ä

2.1

RG-WALL1600-M5100E

2.1.1

2.1.2

2.2.3

RG-WALL1600-M5100E

2.2.7 EMI

2.3

2.4

RG-WALL1600-M5100E

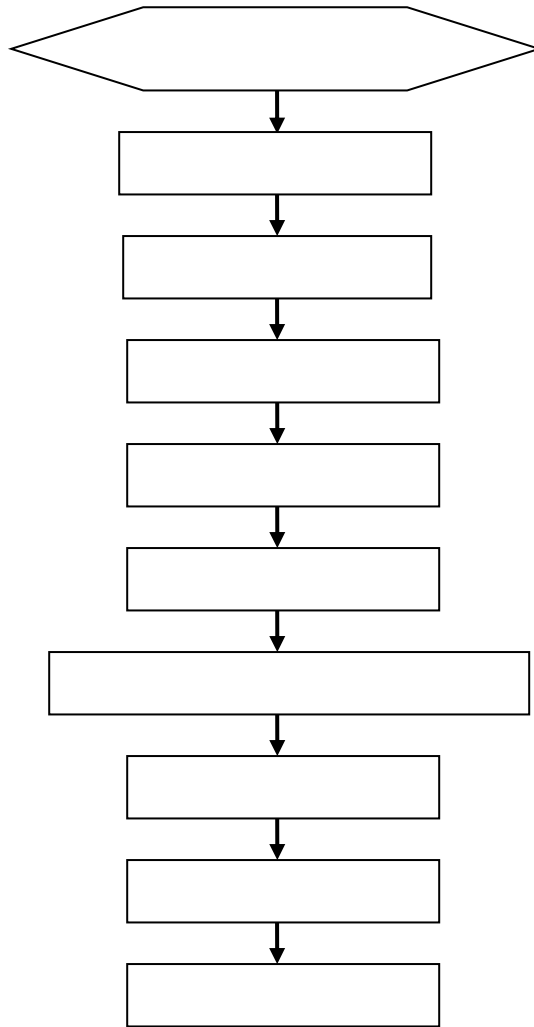
2.5

	2	2	USB	2	Console	8	4
			SFP				

3

RG-WALL1600-M5100E

3.1



3.2

RG-WALL1600-M5100E

3.3

1)

2)

3)

4)

3.7

1)

2)

3)

3.8

3.9

G: D

SFP

SFP

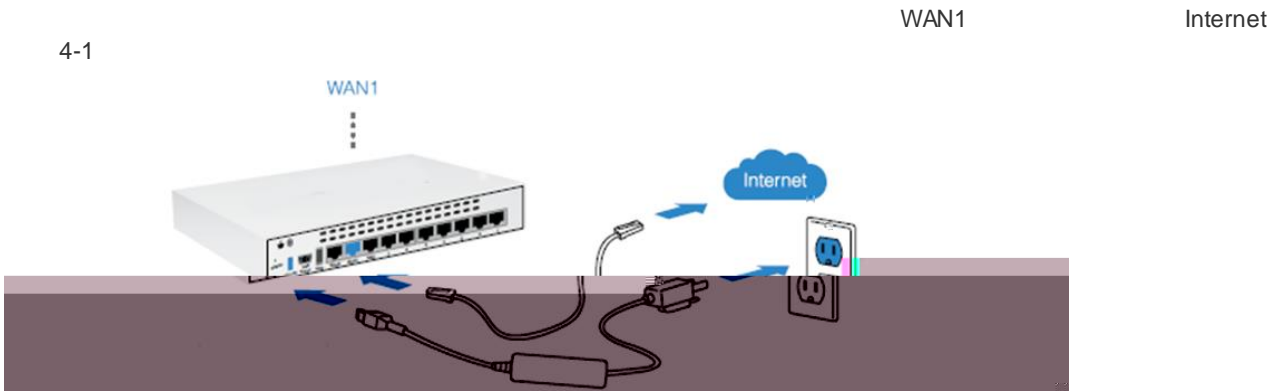
4)

5)

6)

4

4.1



4-1

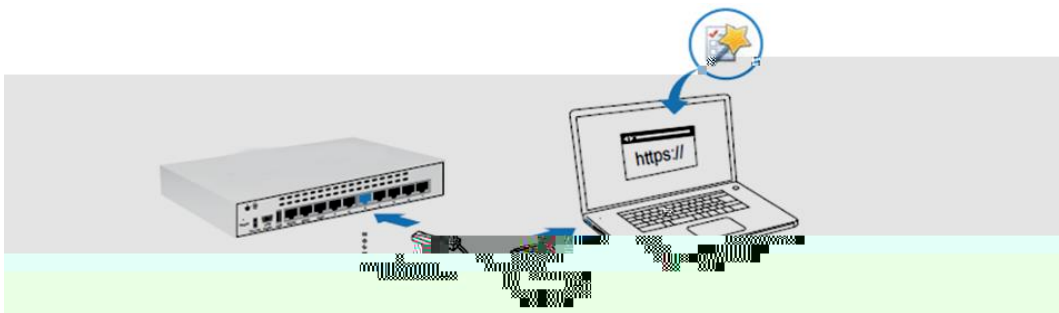
Web

admin

LAN

PC

IP : <https://192.168.1.99>



4-2

7 cbgc`Y

PC

Console

12)

14

13)

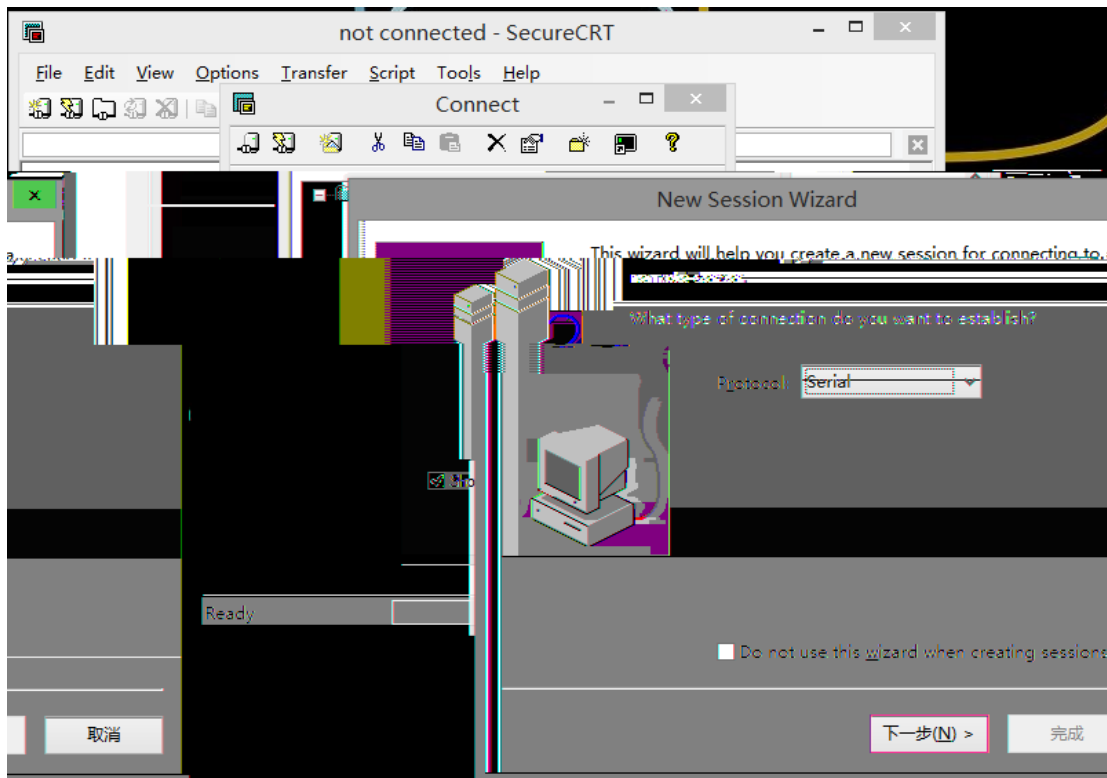
USB	Console	USB	Console	Console	USB	PC
	PC 4-3				COM LPT	COM

(COM5)

4-3

9600 8 1

14)



5

5.1

RG-WALL1600-M5100E

RG-WALL1600-M5100E
RG-WALL1600-M5100E

RG-WALL1600-M5100E Internet
RG-WALL1600-M5100E

Telnet

5.2

6

6.1

6.2

%

(

) `]b_

link

1

2

3

4

1310nm

1550nm

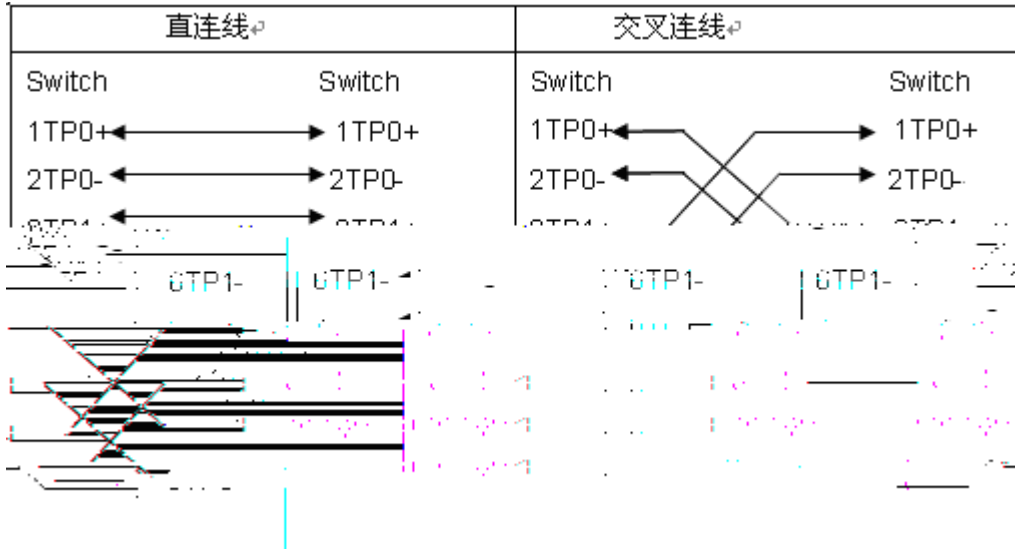
A i i

1000BASE-T/100BASE-TX/10BASE-T

MDI/MDIX Crossover

1000BASE-T IEEE 802.3ab 1000BASE-T 4 100-ohm 5 5 UTP 4 STP 1000BASE-T

A-1 1000BASE-T



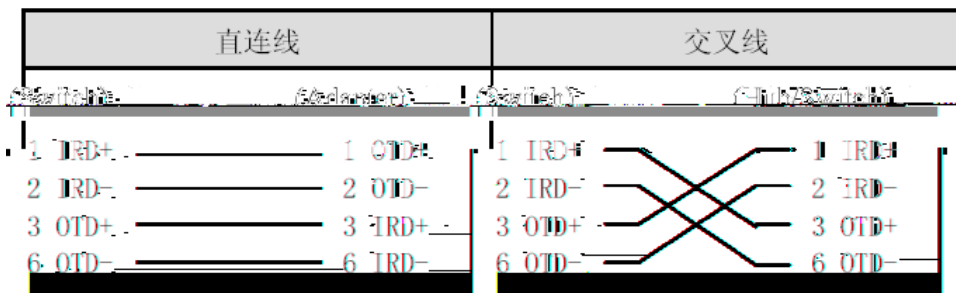
100BASE-TX/10BASE-T 100-ohm 5 100 10Mbps 100-ohm 3,4,5 100BASE-TX/10BASE-T 100Mbps

A-2 100BASE-TX/10BASE-T

Pin	插座	插头
1	Input Receive Data+	Output Transmit Data+
2	Input Receive Data-	Output Transmit Data-

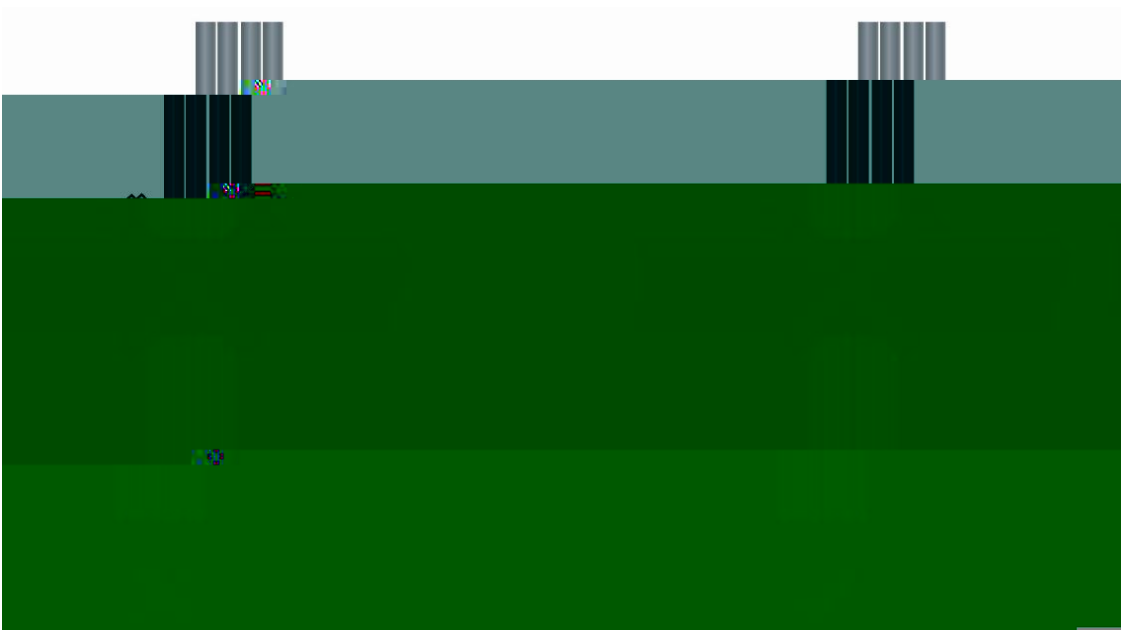
100BASE-TX/10BASE-T

A-3 100BASE-TX/10BASE-T



A 4





D-3

D-3



220V

-48V

D-4

D-4

mm	mm
10	80~150
10~30	150~200
30	200~300